

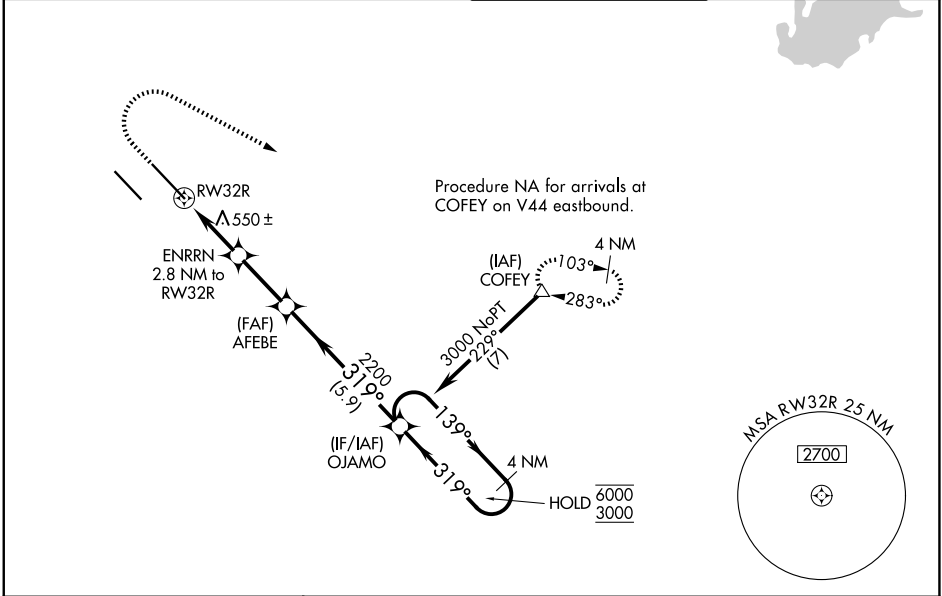
WAAS CH <b>50518</b> <b>W32A</b>	APP CRS <b>319°</b>	Rwy Ldg <b>10000</b> TDZE <b>442</b> Apt Elev <b>459</b>
--	------------------------	--

# RNAV (GPS) Y RWY 32R

SCOTT AFB/MIDAMERICA ST LOUIS (BLV)

RNP APCH - GPS.		MALSR	MISSED APPROACH: Climb to 1500 then climbing right turn to 3000 direct COFEY and hold.
⚠ For uncompensated Baro-VNAV systems, LNAV/VNAV NA below -15°C or above 54°C. Simultaneous approach authorized. *RVR 1800 authorized with use of FD or AP or HUD to DA.			

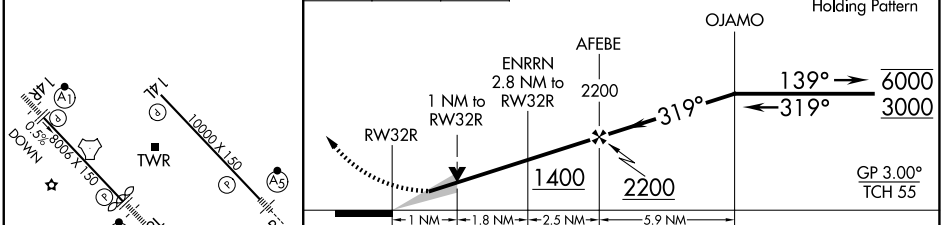
ATIS <b>128.7 256.7</b>	ST LOUIS APP CON <b>125.2 281.5</b>	SCOTT TOWER <b>128.25 253.5</b>	GND CON <b>119.2 275.8</b>
----------------------------	--	------------------------------------	-------------------------------



EC-3, 16 APR 2026 to 14 MAY 2026

EC-3, 16 APR 2026 to 14 MAY 2026

ELEV 459	<b>D</b> TDZE 442	1500	3000	COFEY	VGSI and RNAV glidepath not coincident (VGSI Angle 3.00/TCH 71).
----------	-------------------	------	------	-------	--



	CATEGORY	A	B	C	D
LPV DA*		642/24		200 (200-½)	
LNAV/VNAV DA		830/35		388 (400-⅙)	
LNAV MDA		840/24		840/35 398 (400-⅙)	
CIRCLING		1000-1 541 (600-1)	1120-1 661 (700-1)	1240-2¼ 781 (800-2¼)	1240-2½ 781 (800-2½)

REIL Rwy 14L  
HIRL Rwy 14R-32L and 14L-32R

SCOTT AFB/MIDAMERICA ST LOUIS (BLV)  
38°33'N-89°50'W  
**RNAV (GPS) Y RWY 32R**