

WAAS CH <b>86332</b> <b>W06A</b>	APP CRS <b>060°</b>	Rwy Idg TDZE Apt Elev	<b>4601</b> <b>2563</b> <b>2573</b>
--	------------------------	-----------------------------	---

# RNAV (GPS) RWY 6

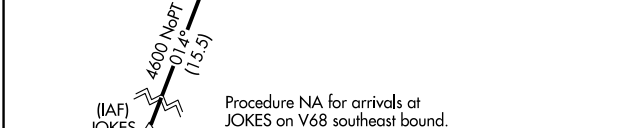
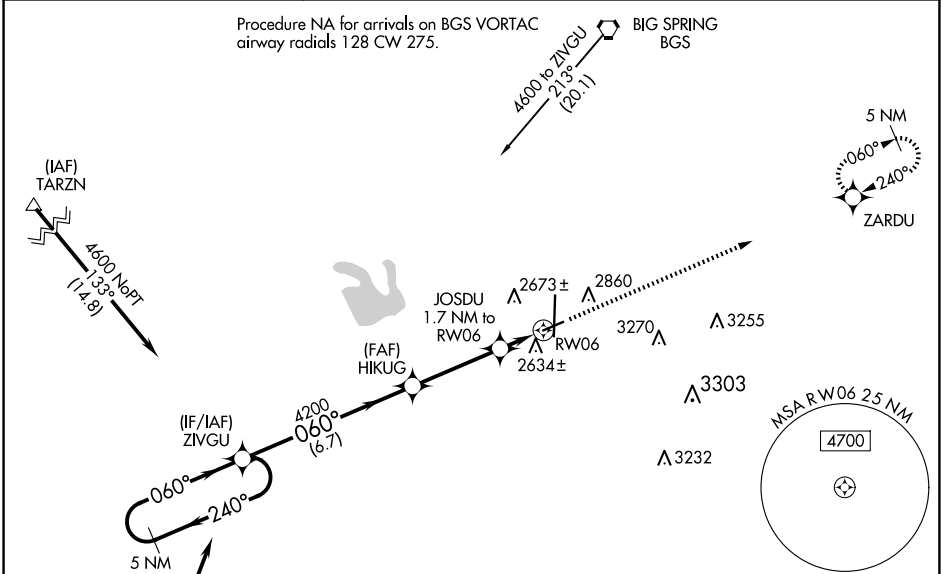
BIG SPRING/MC MAHON-WRINKLE (BPG)

RNP APCH.

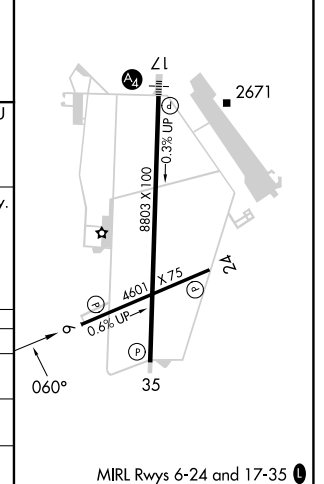
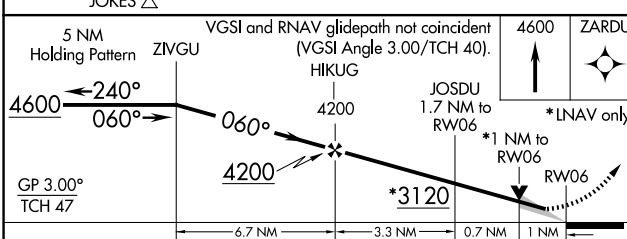
**▼** For uncompensated Baro-VNAV systems, LNAV/VNAV NA below -20°C or above 54°C.  
**▲** When local altimeter setting not received, use Midland Intl Air and Space Port altimeter setting and increase all DA 130 feet, all MDA 140 feet, and increase LPV all Cats visibility 3/8 mile and LNAV/VNAV all Cats visibility 1/2 mile. Baro-VNAV and VDP NA with Midland Intl Air and Space Port altimeter setting.

MISSED APPROACH: Climb to 4600 direct ZARDU and hold.

AWOS-3PT <b>118.025</b>	FORT WORTH CENTER <b>133.7 350.2</b>	UNICOM <b>122.8 (CTAF) 0</b>
----------------------------	---	---------------------------------



ELEV 2573	TDZE 2563
-----------	-----------



CATEGORY	A	B	C	D
LPV DA	2763-3/4	200 (200-3/4)		NA
LNAV/VNAV DA	2813-3/4	250 (300-3/4)		NA
LNAV MDA	2900-1	337 (400-1)		NA

SC-2, 16 APR 2026 to 14 MAY 2026

SC-2, 16 APR 2026 to 14 MAY 2026