

VORTAC BGS <b>117.2</b> Chan <b>119</b>	APP CRS <b>359°</b>	Rwy Idg TDZE <b>2563</b> Apt Elev <b>2573</b>	<b>8803</b> <b>2563</b> <b>2573</b>
---	------------------------	---	---

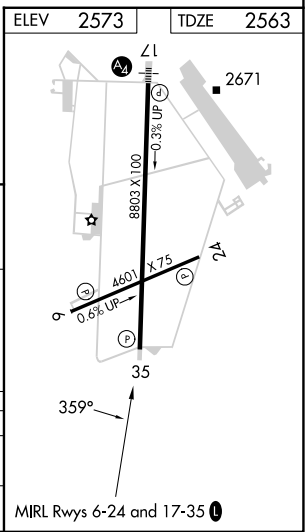
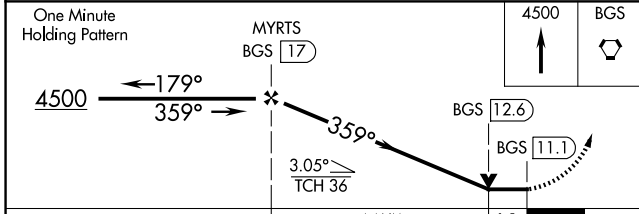
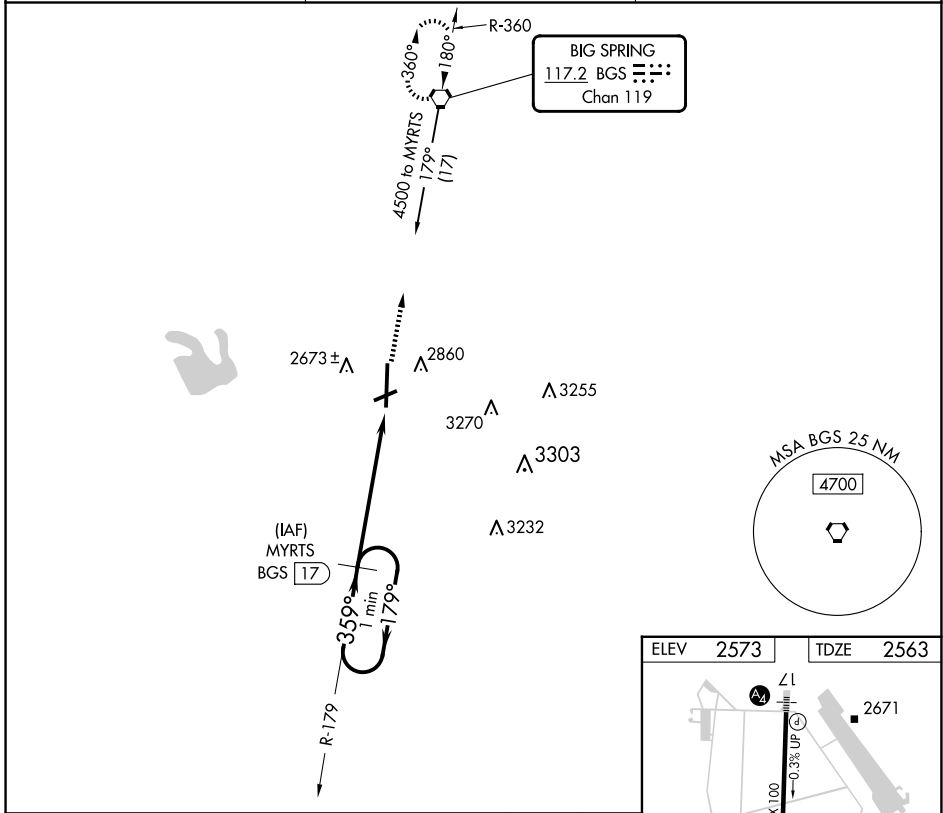
# VOR/DME RWY 35

BIG SPRING/MC MAHON-WRINKLE (BPG)

⚠ When VGS1 inoperative, Circling Rwy 6 NA at night. Circling NA east of Rwy 17-35.  
 ⚠ VDP NA when using Midland Intl Air and Space Port altimeter setting. When local altimeter setting not received, use Midland Intl Air and Space Port altimeter setting and increase all MDA 140 feet, increase S-35 Cats C and D and Circling Cats C and D visibility ¼ mile.

MISSED APPROACH: Climb to 4500 direct to BGS VORTAC and hold.

AWOS-3PT <b>118.025</b>	FORT WORTH CENTER <b>133.7 350.2</b>	UNICOM <b>122.8 (CTAF) 0</b>
----------------------------	---	---------------------------------



CATEGORY	A	B	C	D
S-35	3080-1	517 (600-1)	3080-1½ 517 (600-1½)	3080-1¾ 517 (600-1¾)
<b>C</b> CIRCLING	3080-1	507 (600-1)	3080-1½ 507 (600-1½)	3140-2 567 (600-2)

SC-2, 16 APR 2026 to 14 MAY 2026

SC-2, 16 APR 2026 to 14 MAY 2026