

LOC/DME I-BMO <b>111.5</b> Chan <b>52</b>	APP CRS <b>282°</b>	Rwy Ldg TDZE <b>10518</b> <b>3517</b> Apt Elev <b>3662</b>
---	------------------------	--

# ILS or LOC RWY 28R

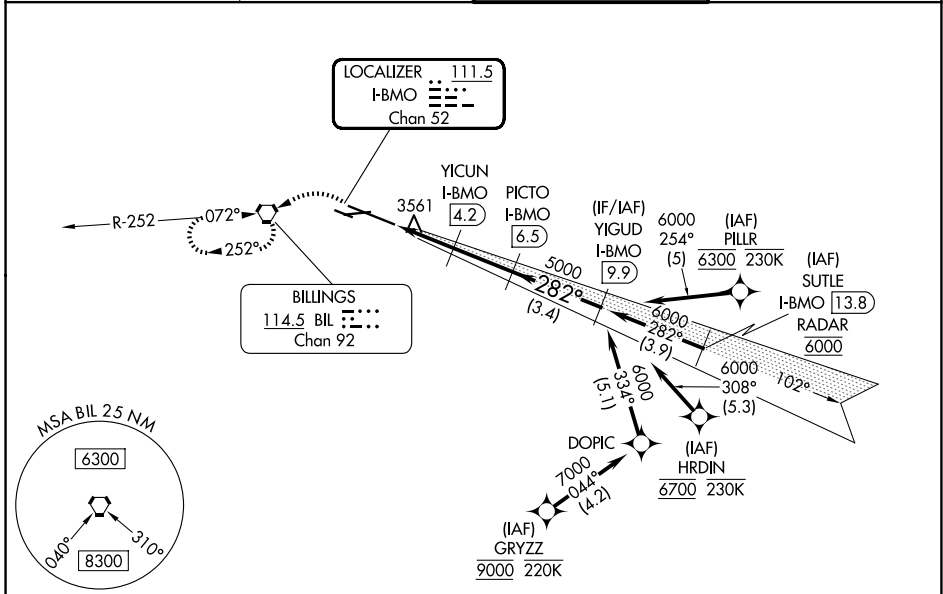
BILLINGS LOGAN INTL (BIL)

DME required.  
Aircraft not GPS equipped - RADAR required for procedure entry.  
RNP APCH-GPS. from GRYZZ or HRDIN or PILLR.

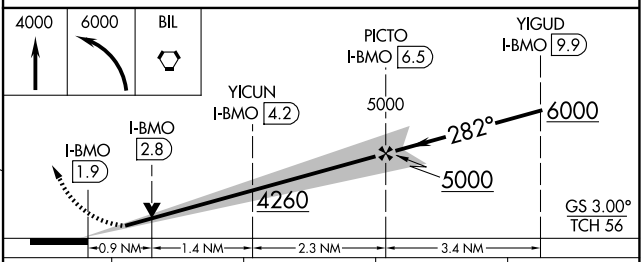
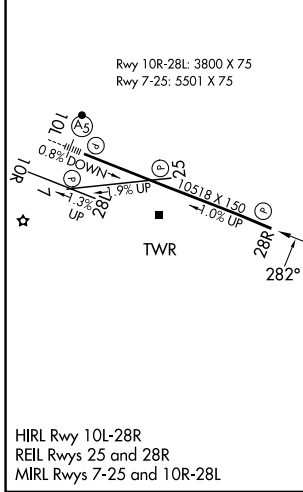
**⚠** Rwy 28R helicopter visibility reduction below 3/4 SM NA.

MISSED APPROACH: Climb to 4000 then climbing left turn to 6000 direct BIL VORTAC and hold, continue climb-in-hold to 6000.

ATIS <b>126.3</b>	BILLINGS APP CON <b>120.5 284.6</b>	BILLINGS TOWER <b>127.2 257.8</b>	GND CON <b>121.9</b>
----------------------	--	--------------------------------------	-------------------------



ELEV 3662	<b>D</b>	TDZE 3517
-----------	----------	-----------



CATEGORY	A	B	C	D
S-ILS 28R	3767-3/4		250 (200-3/4)	
S-LOC 28R	3840-1		323 (200-1)	
CIRCLING	4160-1	498 (500-1)	4180-1 1/2 518 (600-1 1/2)	4580-3 918 (1000-3)

NW-1, 16 APR 2026 to 14 MAY 2026

NW-1, 16 APR 2026 to 14 MAY 2026