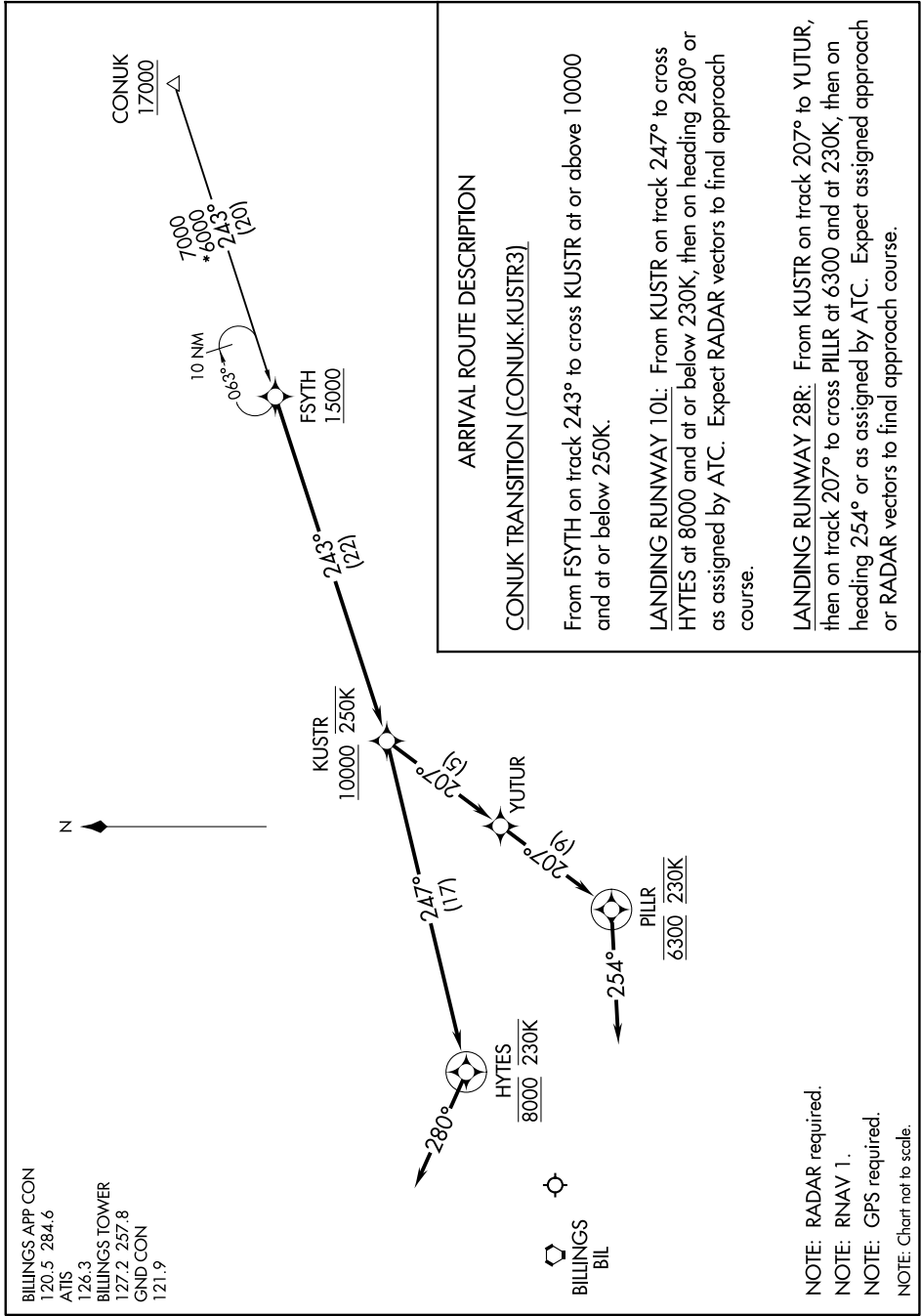


NW-1, 16 APR 2026 to 14 MAY 2026



### ARRIVAL ROUTE DESCRIPTION

#### CONUK TRANSITION (CONUK.KUSTR3)

From FSYTH on track 243° to cross KUSTR at or above 10000 and at or below 250K.

**LANDING RUNWAY 10L:** From KUSTR on track 247° to cross HYPES at 8000 and at or below 230K, then on heading 280° or as assigned by ATC. Expect RADAR vectors to final approach course.

**LANDING RUNWAY 28R:** From KUSTR on track 207° to YUTUR, then on track 207° to cross PILLR at 6300 and at 230K, then on heading 254° or as assigned by ATC. Expect assigned approach or RADAR vectors to final approach course.

- BILLINGS APP CON  
120.5 284.6
- ATIS  
126.3
- BILLINGS TOWER  
127.2 257.8
- GND CON  
121.9

- BILLINGS  
BIL

- NOTE: RADAR required.
- NOTE: RNAV 1.
- NOTE: GPS required.
- NOTE: Chart not to scale.

NW-1, 16 APR 2026 to 14 MAY 2026