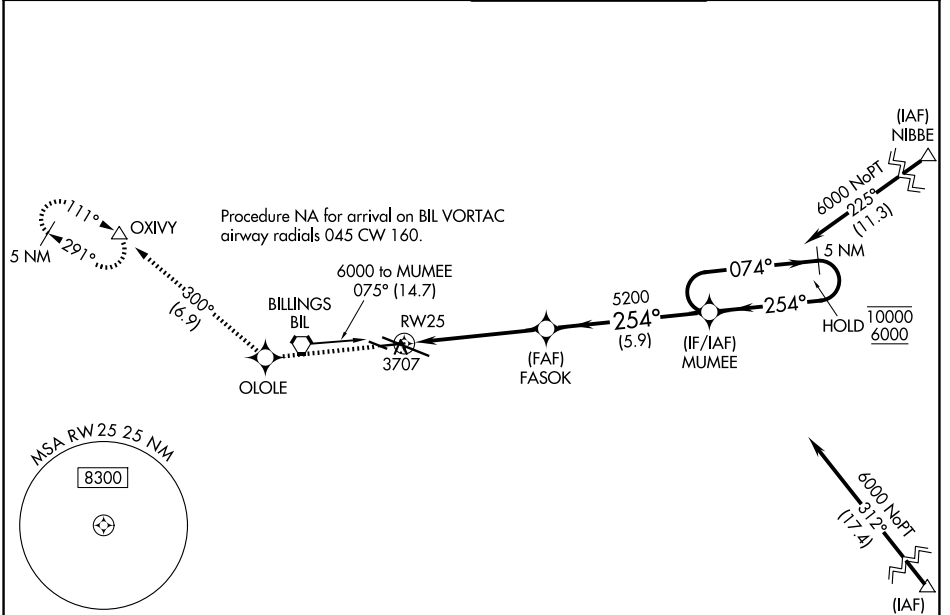


WAAS CH 78028 W25A	APP CRS 254°	Rwy Ldg TDZE Apt Elev	5501 3586 3662
--	------------------------	-----------------------------	---

RNAV (GPS) RWY 25

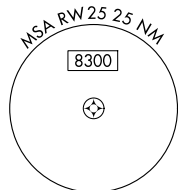
BILLINGS LOGAN INTL (BIL)

RNP APCH - GPS.		MISSED APPROACH: Climb to 6000 direct OLOLE and on track 300° to OXIVY and hold.	
<p>⚠ For uncompensated Baro-VNAV systems, LNAV/VNAV NA below -25°C or above 54°C.</p>			
ATIS 126.3	BILLINGS APP CON 120.5 284.6	BILLINGS TOWER 127.2 257.8	GND CON 121.9

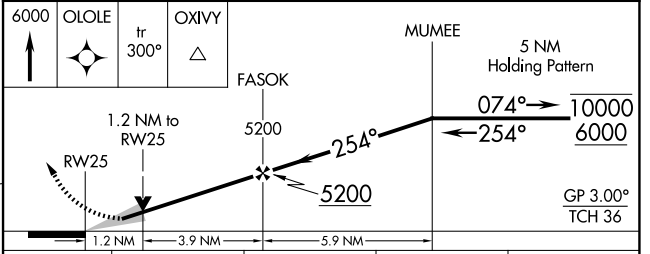
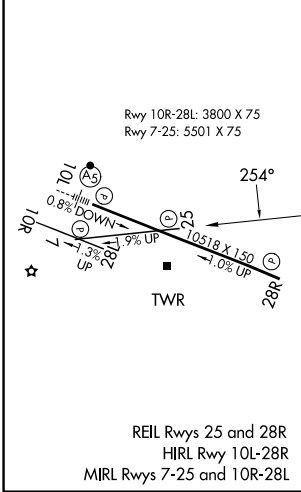


NW-1, 16 APR 2026 to 14 MAY 2026

NW-1, 16 APR 2026 to 14 MAY 2026



ELEV 3662	D	TDZE 3586
-----------	----------	-----------



CATEGORY	A	B	C	D
LPV DA		3836- ³ / ₄	250 (200- ³ / ₄)	
LNAV/VNAV DA		3920-1	334 (300-1)	
LNAV MDA		3960-1	374 (300-1)	
CIRCLING	4160-1	498 (500-1)	4180-1½ 518 (600-1½)	4580-3 918 (1000-3)