

BILOXI, MISSISSIPPI

# RNAV (GPS) RWY 22

APCH CRS <b>217°</b>	Rwy Idg <b>THRE</b>	<b>6630</b>
	Arprt Elev <b>33</b>	

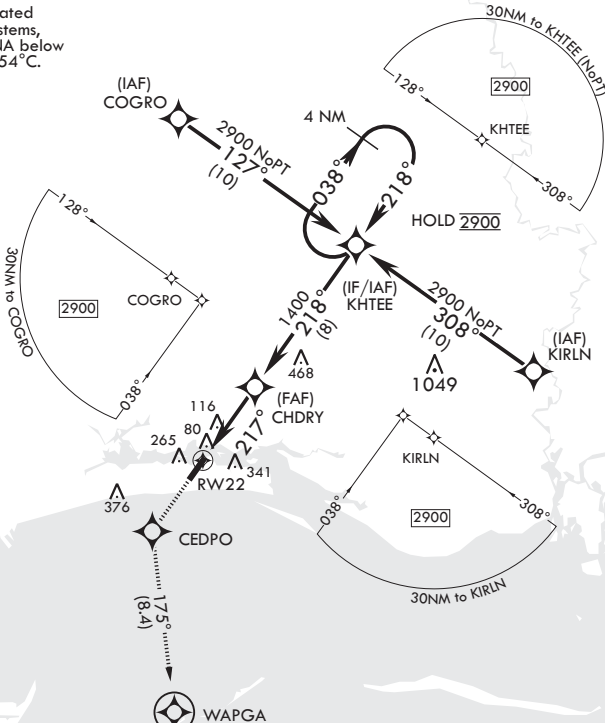
(USAF)

KEESLER AFB (KBIX)

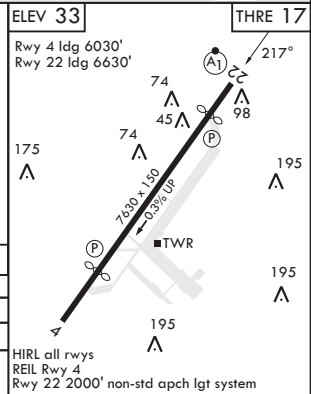
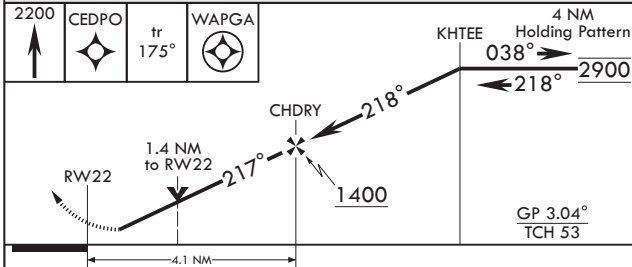
RNP APCH	ALSF-1	MISSED APPROACH: Climb to 2200 direct CEDPO and track 175° to WAPGA. Expect ATC instructions.
<p>▼ * When ALS inop, increase vis to 1 3/8 miles. ** When ALS inop, increase CAT AB RVR to 55, vis to 1 mile; CAT CD vis to 1 3/8 miles.</p>		

ATIS★ <b>281.55</b>	GULFPORT APP CON/DEP CON★ <b>124.6 354.1 130° - 309°</b> <b>127.5 254.25 310° - 129°</b>	TOWER★ <b>120.75 269.075</b>	GND CON★ <b>121.8 275.8</b>	CLNC DEL <b>121.8 275.8</b>
------------------------	------------------------------------------------------------------------------------------------	---------------------------------	--------------------------------	--------------------------------

For uncompensated Baro-VNAV systems, LNAV/VNAV NA below 8°C or above 54°C.



EMERG SAFE ALT 100 NM 3100



CATEGORY	A	B	C	D
LNAV/VNAV DA*	520-1¼	503	503	(500-1¼)
LNAV MDA**	520/40	503 (500-¾)	520-1¼	503 (500-1¼)
☐ CIRCLING	580-1 547 (600-1)	660-1 627 (700-1)	680-1¼ 647 (700-1¼)	680-2 647 (700-2)

BILOXI, MISSISSIPPI

30°25'N - 88°55'W

KEESLER AFB (KBIX)

Amdt 2 21APR22

# RNAV (GPS) RWY 22

SC-4, 16 APR 2026 to 14 MAY 2026

SC-4, 16 APR 2026 to 14 MAY 2026