

BILOXI, MISSISSIPPI

# RNAV (GPS) RWY 4

APCH CRS	Rwy Idg	6030
037°	TDZE	23
	Arprt Elev	33

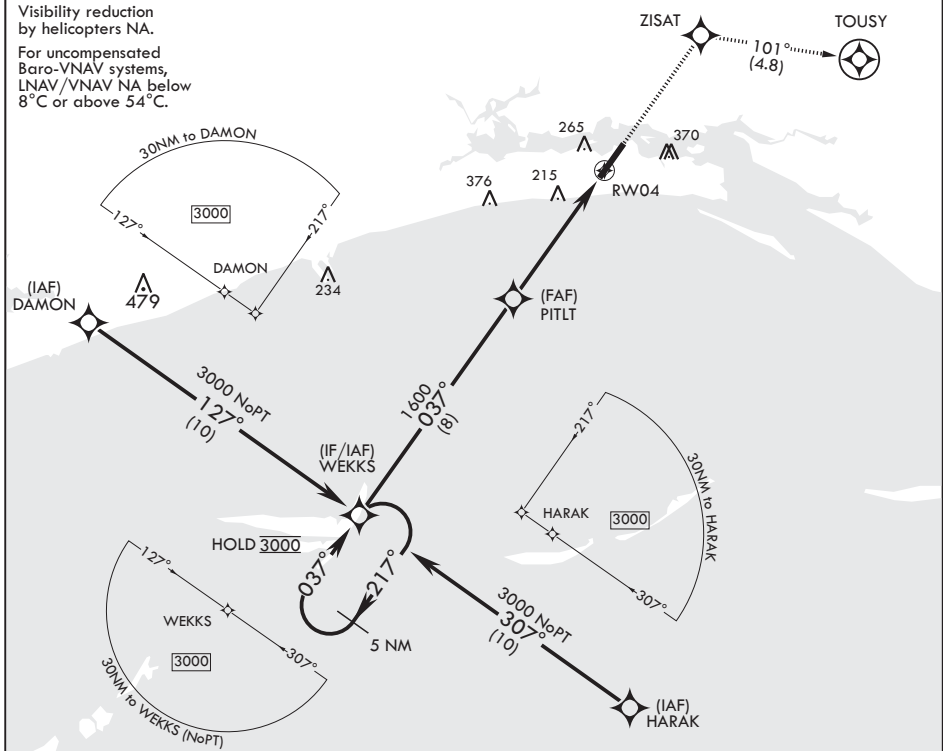
(USAF)

KEESLER AFB (KBIX)

RNP APCH MISSED APPROACH: Climb to 2100 direct ZISAT and track 101° to TOUSY. Expect ATC instructions.

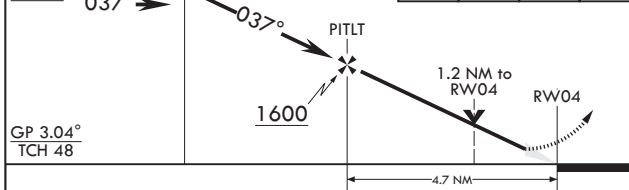
ATIS★ 281.55	GULFPORT APP CON/DEP CON★ 124.6 354.1 130° - 309° 127.5 254.25 310° - 129°	TOWER★ 120.75 269.075	GND CON★ 121.8 275.8	CLNC DEL 121.8 275.8
-----------------	--	--------------------------	-------------------------	-------------------------

Visibility reduction by helicopters NA.  
For uncompensated Baro-VNAV systems, LNAV/VNAV NA below 8°C or above 54°C.

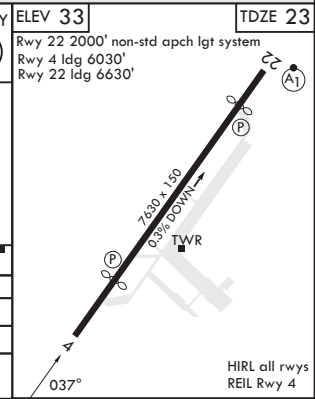


EMERG SAFE ALT 100 NM 3100

5 NM Holding Pattern WEKKS	2100	ZISAT	TOUSY	ELEV 33	TDZE 23
3000	↑	◆	tr 101°	⊙	Rwy 22 2000' non-std apch lgt system
037°					Rwy 4 Idg 6030'
					Rwy 22 Idg 6630'



CATEGORY	A		B		C		D	
LNAV/VNAV DA	391/55		368		(400-1)			
LNAV MDA	460/55	437 (500-1)	460-1¼	437 (500-1¼)				
Ⓢ CIRCLING	580-1 547 (600-1)	660-1 627 (700-1)	680-1¼ 647 (700-1¼)	680-2 647 (700-2)				



BILOXI, MISSISSIPPI

30°25'N - 88°55'W

KEESLER AFB (KBIX)

Amdt 2 07SEP23

# RNAV (GPS) RWY 4

SC-4, 16 APR 2026 to 14 MAY 2026

SC-4, 16 APR 2026 to 14 MAY 2026