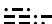



ATIS
119.4 270.1
CLNC DEL
125.675 305.2
BIRMINGHAM TOWER
119.9 317.725

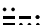
**TOP ALTITUDE:
4000**


NOTE: RADAR required.
NOTE: Use frequency depicted within
sector where FIX/NAVAID
for your route is located.

ROCKET
112.2 RGZ 
Chan 59

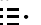
GADSDEN
112.3 GAD 
Chan 70

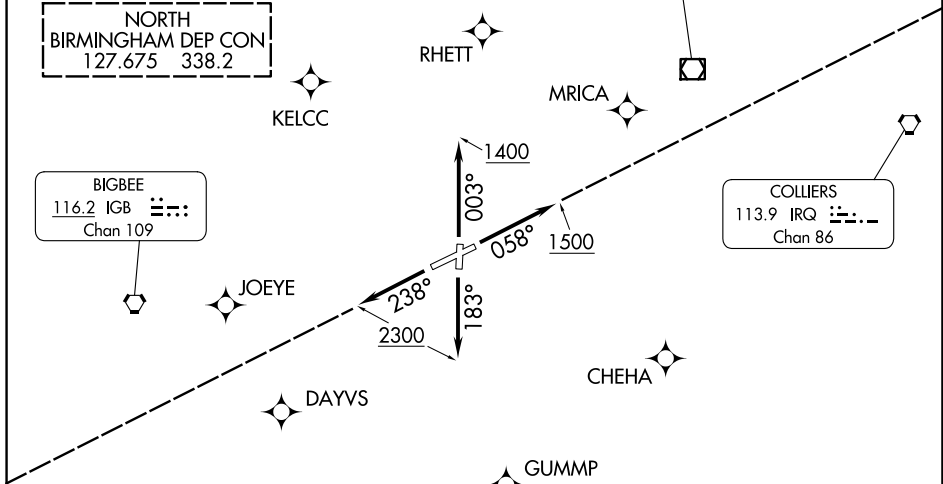
NORTH
BIRMINGHAM DEP CON
127.675 338.2

BIGBEE
116.2 IGB 
Chan 109

COLLIERS
113.9 IRQ 
Chan 86

SOUTH
BIRMINGHAM DEP CON
123.8 256.8

MONTGOMERY
112.1 MGM 
Chan 58



SE-4, 16 APR 2026 to 14 MAY 2026

SE-4, 16 APR 2026 to 14 MAY 2026

TAKEOFF MINIMUMS

- Rwy 6: 300-2 with minimum climb of 285' per NM to 1800
or standard with minimum climb of 435' per NM to 1300.
- Rwy 18: 600-3 with minimum climb of 225' per NM to 1300
or standard with minimum climb of 455' per NM to 1500.
- Rwy 24: Standard with minimum climb of 280' per NM to 1400.
- Rwy 36: 300-2¼ or standard with minimum climb of 565' per
NM to 1000.

(CONTINUED ON FOLLOWING PAGE)

NOTE: Chart not to scale.



DEPARTURE ROUTE DESCRIPTION

TAKEOFF RUNWAY 6: Climb on heading 058° to 1500, thence

TAKEOFF RUNWAY 18: Climb on heading 183° to 2300, thence

TAKEOFF RUNWAY 24: Climb on heading 238° to 2300, thence

TAKEOFF RUNWAY 36: Climb on heading 003° to 1400, thence

. . . . Expect vectors to filed route, maintain 4000 or assigned lower altitude.
Expect clearance to filed altitude ten minutes after departure.

SE-4, 16 APR 2026 to 14 MAY 2026

SE-4, 16 APR 2026 to 14 MAY 2026