

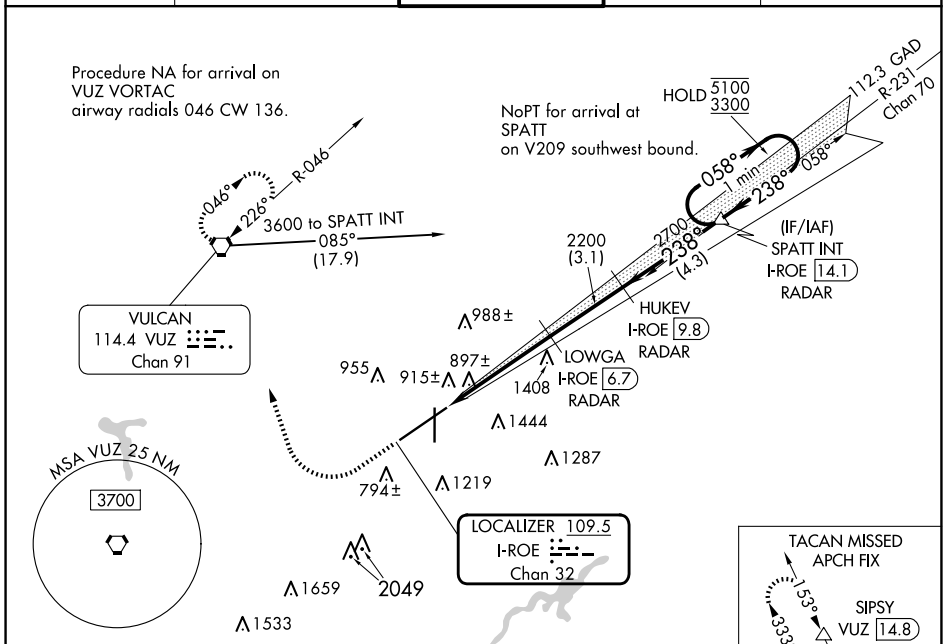
LOC/DME I-ROE <b>109.5</b> Chan <b>32</b>	APP CRS <b>238°</b>	Rwy Idg <b>10801</b> TDZE <b>641</b> Apt Elev <b>650</b>
---	------------------------	--

# ILS RWY 24 (SA CAT II)

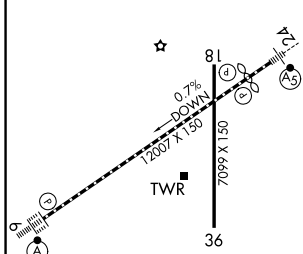
BIRMINGHAM-SHUTTLESWORTH INTL (BHM)

DME or RADAR required.	MALSR 	MISSED APPROACH: Climb to 1300 then climbing right turn to 3000 direct VUZ VORTAC and hold (TACAN aircraft continue on VUZ VORTAC R-333 to SIPSY/VUZ 14.8 DME and hold NW, right turn, 153° inbound).
------------------------	-----------	---

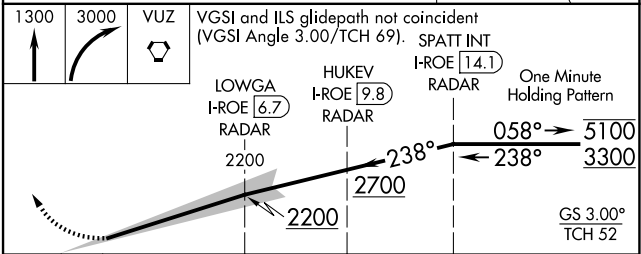
ATIS <b>119.4 270.1</b>	BIRMINGHAM APP CON <b>123.8 256.8</b>	BIRMINGHAM TOWER <b>119.9 317.725</b>	GND CON <b>121.7 348.6</b>	CLNC DEL <b>125.675 305.2</b>
----------------------------	--	--	-------------------------------	----------------------------------



ELEV <b>650</b>	<b>D</b>	TDZE <b>641</b>
-----------------	----------	-----------------



REIL Rwy 18 and 36  
TDZ/CL Rwy 6  
HIRL Rwy 6-24  
MIRL Rwy 18-36



1.235	4.7 NM	3.1 NM	4.3 NM
-------	--------	--------	--------

CATEGORY	A	B	C	D
----------	---	---	---	---

S-ILS 24	SA CAT II RA 92/12		100 DA 741
----------	--------------------	--	------------

## SA CATEGORY II ILS-SPECIAL AIRCREW & AIRCRAFT CERTIFICATION REQUIRED

SE-4, 16 APR 2026 to 14 MAY 2026

SE-4, 16 APR 2026 to 14 MAY 2026