

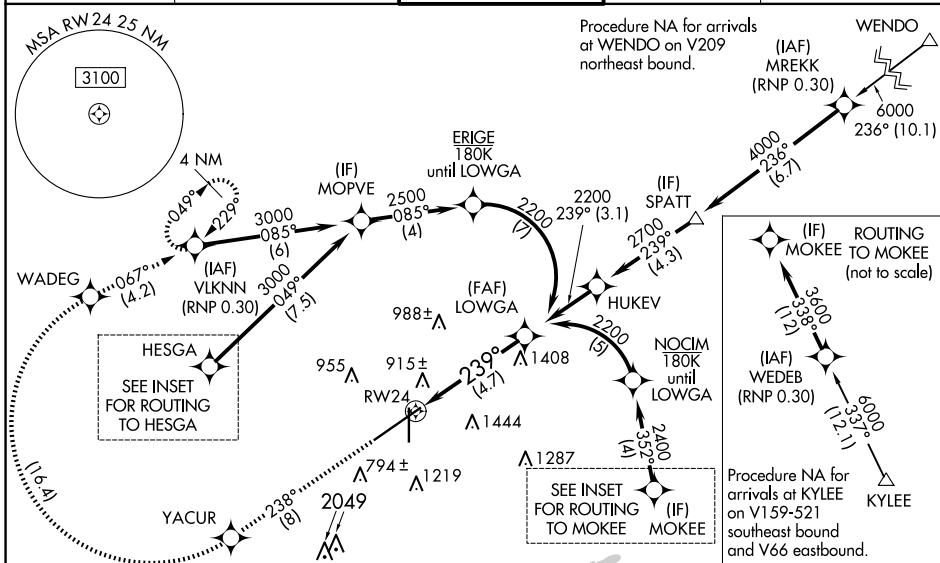
APP CRS	Rwy Idg	10801
239°	TDZE	641
	Apt Elev	650

RNAV (RNP) Z RWY 24

BIRMINGHAM-SHUTTLESWORTH INTL (BHM)

RNP AR APCH. RF required.	MALSR	MISSED APPROACH: Climb to 3000 on track 238° to YACUR then, right turn to WADEG, then on track 067° to VLKNN and hold.
▼ For uncompensated Baro-VNAV systems, procedure NA below -8°C or above 54°C. For inop ALS, increase RNP 0.15 all Cats visibility to 1 3/8 and increase RNP 0.30 all Cats visibility to 1 3/4 SM.		

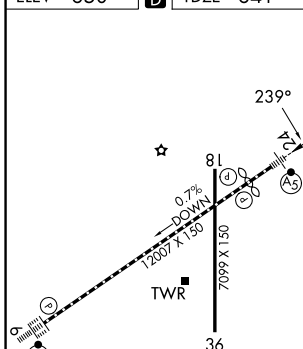
ATIS 119.4 270.1	BIRMINGHAM APP CON 123.8 256.8	BIRMINGHAM TOWER 119.9 317.725	GND CON 121.7 348.6	CLNC DEL 125.675 305.2
----------------------------	--	--	-------------------------------	----------------------------------



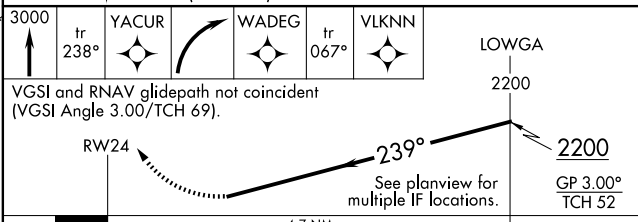
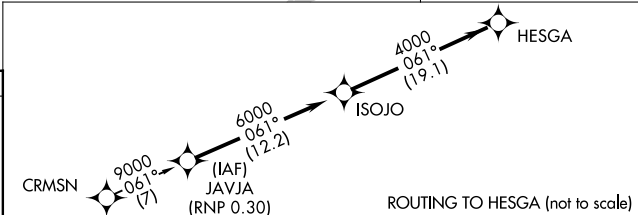
SE-4, 16 APR 2026 to 14 MAY 2026

SE-4, 16 APR 2026 to 14 MAY 2026

ELEV	650	D	TDZE	641
------	-----	----------	------	-----



REIL Rwy 18 and 36
TDZ/CL Rwy 6
HIRL Rwy 6-24
MIRL Rwy 18-36



VGSI and RNAV glidepath not coincident (VGSI Angle 3.00/TCH 69).	RW24	239°	2200	2200
			GP 3.00°	TCH 52
	4.7 NM			

CATEGORY	A	B	C	D
RNP 0.15 DA		1149-1	508 (500-1)	
RNP 0.30 DA		1243-1 3/8	602 (600-1 3/8)	

AUTHORIZATION REQUIRED