

LOC I-BZX <b>111.5</b>	APP CRS <b>131°</b>	Rwy Ldg <b>8794</b>
		TDZE <b>1655</b>
		Apt Elev <b>1661</b>

# ILS or LOC RWY 13

BISMARCK MUNI (BIS)

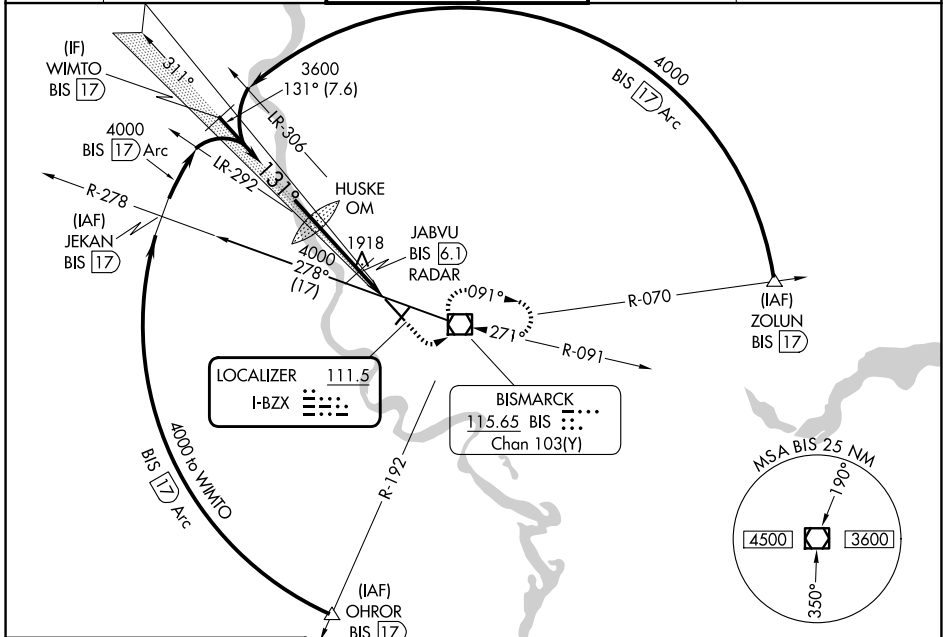
DME required for procedure entry. DME required.

**ASR**  
Inop table does not apply to S-ILS 13. DME from BIS VOR/DME. Simultaneous reception of I-BZX and BIS DME required. # DME from BIS VOR/DME.



**MISSED APPROACH:** Climb to 2200 then climbing left turn to 3600 direct BIS VOR/DME and hold, continue climb-in-hold to 3600.

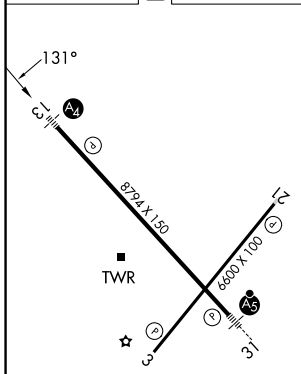
ATIS <b>119.35</b>	BISMARCK APP CON ★ <b>126.3 298.9</b>	BISMARCK TOWER★ <b>118.3 (CTAF) 0 257.8</b>	GND CON <b>121.9</b>	UNICOM <b>122.95</b>
-----------------------	--	--	-------------------------	-------------------------



NC-1, 16 APR 2026 to 14 MAY 2026

NC-1, 16 APR 2026 to 14 MAY 2026

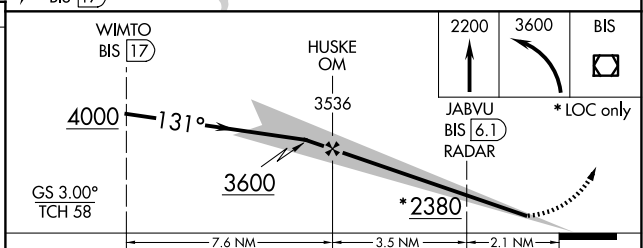
ELEV 1661	D	TDZE 1655
-----------	---	-----------



REIL Rwy 3 and 21  
HIRL Rwy 3-21 and 13-31

FAF to MAP 5.6 NM

Knots	60	90	120	150	180
Min:Sec	5:36	3:44	2:48	2:14	1:52



CATEGORY	A	B	C	D
S-ILS 13	1855-3/4 200 (200-3/4)			
S-LOC 13	2380-3/4	725 (800-3/4)	2380-13/4	725 (800-13/4)
CIRCLING	2380-1	719 (800-1)	2460-21/4 799 (800-21/4)	2460-21/2 799 (800-21/2)
# JABVU FIX MINIMUMS				
S-LOC 13	2180-3/4	525 (600-3/4)	2180-11/4	525 (600-11/4)
CIRCLING	2200-1	539 (600-1)	2460-21/4 799 (800-21/4)	2460-21/2 799 (800-21/2)