

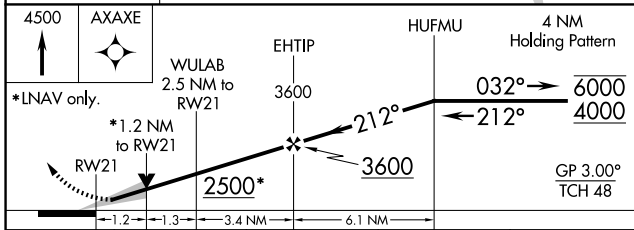
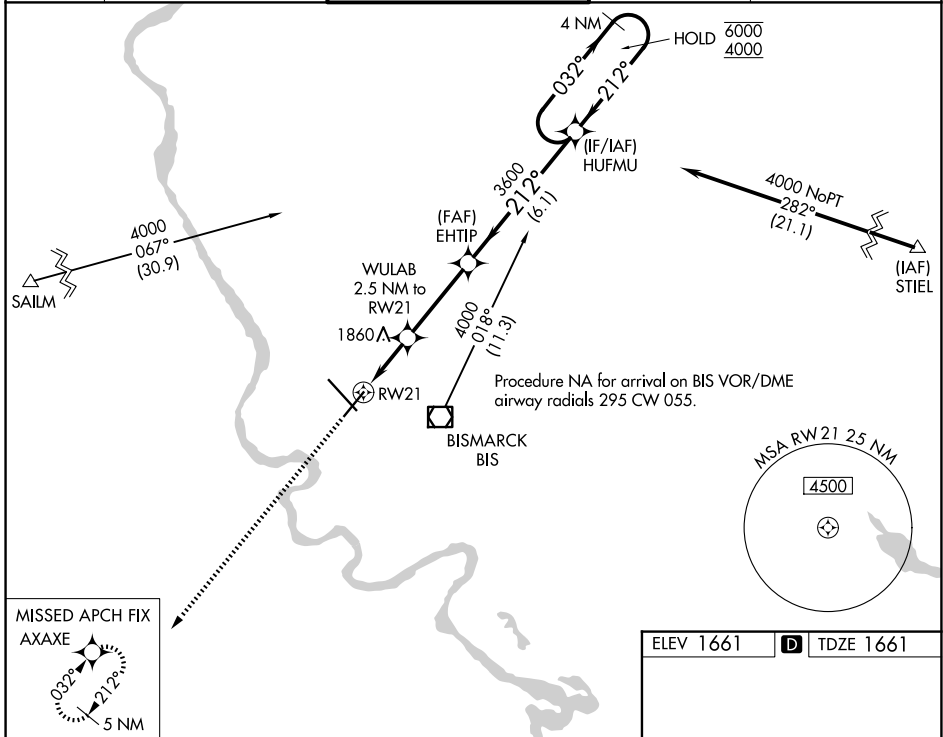
WAAS CH <b>53520</b> <b>W21A</b>	APP CRS <b>212°</b>	Rwy Ldg TDZE Apt Elev	<b>6600</b> <b>1661</b> <b>1661</b>
--	------------------------	-----------------------------	---

# RNAV (GPS) RWY 21

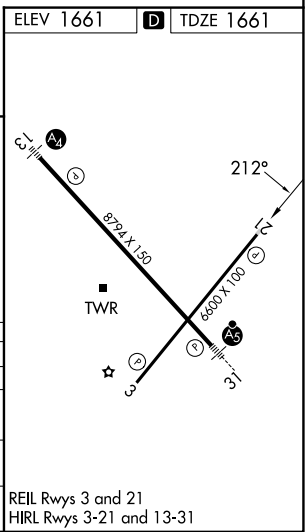
BISMARCK MUNI (BIS)

RNP APCH.		MISSED APPROACH: Climb to 4500 direct AXAXE and hold.	
ASR		For uncompensated Baro-VNAV systems, LNAV/VNAV NA below -22°C or above 54°C.	

ATIS <b>119.35</b>	BISMARCK APP CON ★ <b>126.3 298.9</b>	BISMARCK TOWER★ <b>118.3(CTAF) 0 257.8</b>	GND CON <b>121.9</b>	UNICOM <b>122.95</b>
-----------------------	--	---	-------------------------	-------------------------



CATEGORY	A	B	C	D
LPV DA		1861-3/4	200 (200-3/4)	
LNAV/VNAV DA		1970-7/8	309 (400-7/8)	
LNAV MDA	2100-1	439 (500-1)	2100-1 1/4	439 (500-1 1/4)
CIRCLING	2200-1	539 (600-1)	2460-2 1/4 799 (800-2 1/4)	2460-2 1/2 799 (800-2 1/2)



NC-1, 16 APR 2026 to 14 MAY 2026

NC-1, 16 APR 2026 to 14 MAY 2026