

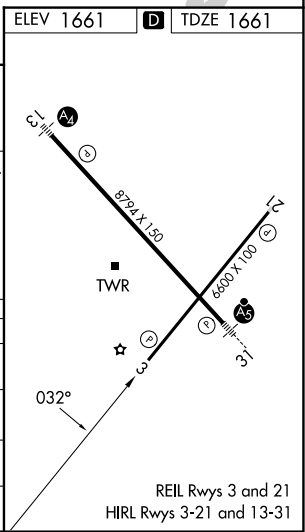
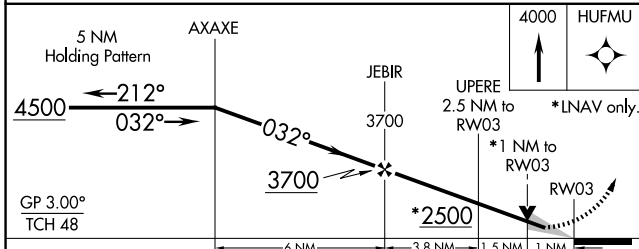
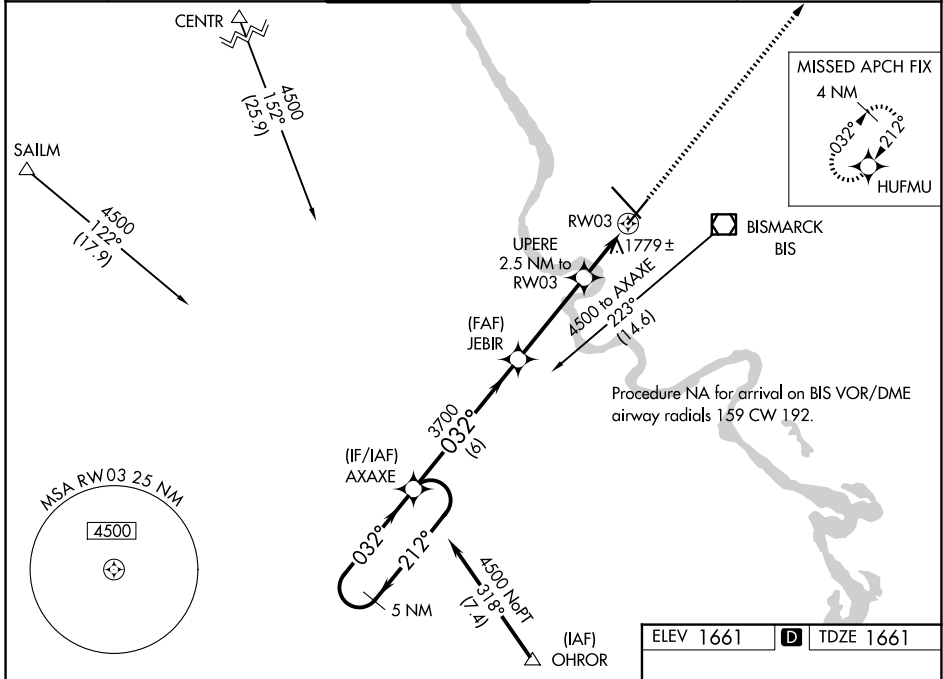
WAAS CH 63099 W03A	APP CRS 032°	Rwy Ldg TDZE Apt Elev	6600 1661 1661
--	------------------------	-----------------------------	---

RNAV (GPS) RWY 3

BISMARCK MUNI (BIS)

	For uncompensated Baro-VNAV systems, LNAV/VNAV NA below -18°C (0°F) or above 33°C (91°F). DME/DME RNP-0.3 NA.	MISSED APPROACH: Climb to 4000 direct HUFMU and hold.

ATIS 119.35	BISMARCK APP CON * 126.3 298.9	BISMARCK TOWER * 118.3 (CTAF) 0 257.8	GND CON 121.9	UNICOM 122.95
-----------------------	--	---	-------------------------	-------------------------



CATEGORY	A	B	C	D
LPV DA		1861-3/4	200 (200-3/4)	
LNAV/VNAV DA		2081-13/8	420 (500-13/8)	
LNAV MDA		2040-1	379 (400-1)	
CIRCLING	2200-1	539 (600-1)	2460-2 1/4 799 (800-2 1/4)	2460-2 1/2 799 (800-2 1/2)

NC-1, 16 APR 2026 to 14 MAY 2026

NC-1, 16 APR 2026 to 14 MAY 2026