

WAAS CH 56599 W31A	APP CRS 311°	Rwy Ldg TDZE Apt Elev	8794 1645 1661
--	------------------------	-----------------------------	---

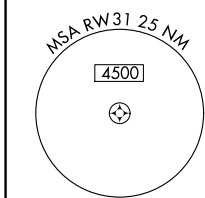
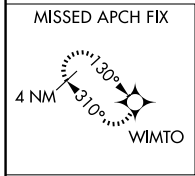
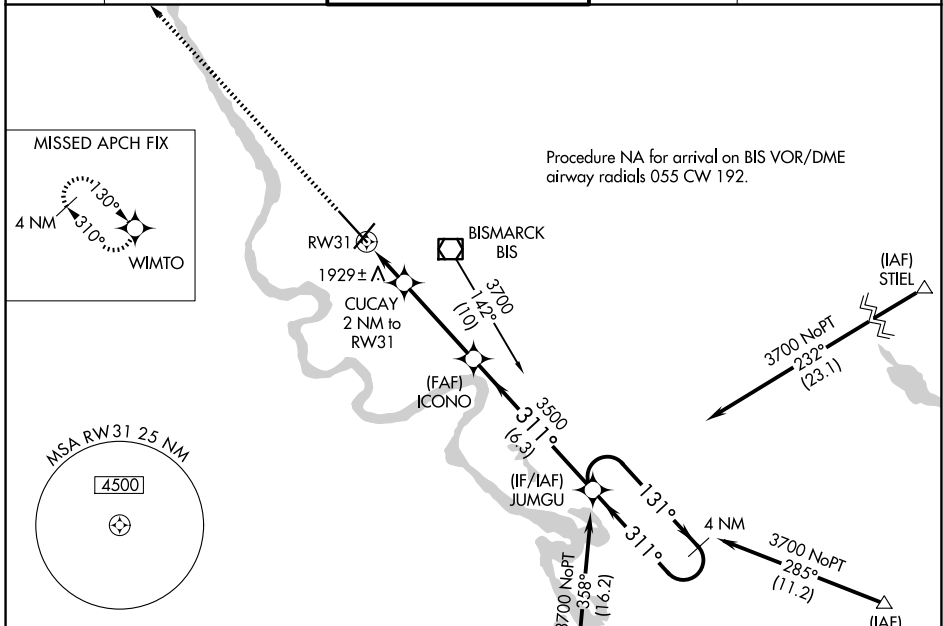
RNAV (GPS) RWY 31

BISMARCK MUNI (BIS)

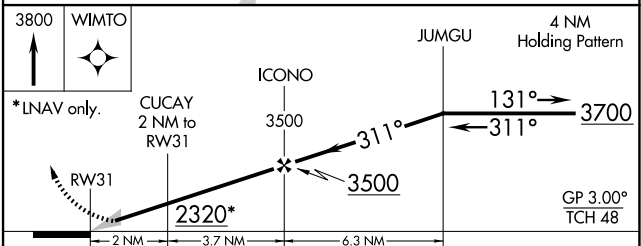
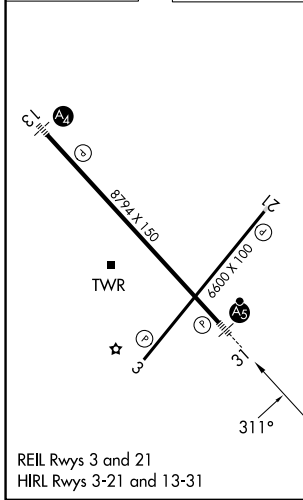
ASR For uncompensated Baro-VNAV systems, LNAV/VNAV NA below -18°C (0°F) or above 33°C (91°F). DME/DME RNP-0.3 NA. ** RVR 1800 authorized with use of FD or AP or HUD to DA.

MALS MISSED APPROACH: Climb to 3800 direct WIMTO and hold.

ATIS 119.35	BISMARCK APP CON* 126.3 298.9	BISMARCK TOWER* 118.3 (CTAF) 0 257.8	GND CON 121.9	UNICOM 122.95
-----------------------	---	--	-------------------------	-------------------------



ELEV 1661	D	TDZE 1645
-----------	----------	-----------



CATEGORY	A	B	C	D
LPV DA	1845/24 200 (200-½)			
LNAV/VNAV DA	2269-1¾ 624 (700-1¾)			
LNAV MDA	2180/24 535 (600-½)		2180/55 535 (600-1)	
CIRCLING	2200-1 539 (600-1)		2460-2¼ 799 (800-2¼) 2460-2½ 799 (800-2½)	

NC-1, 16 APR 2026 to 14 MAY 2026

NC-1, 16 APR 2026 to 14 MAY 2026