

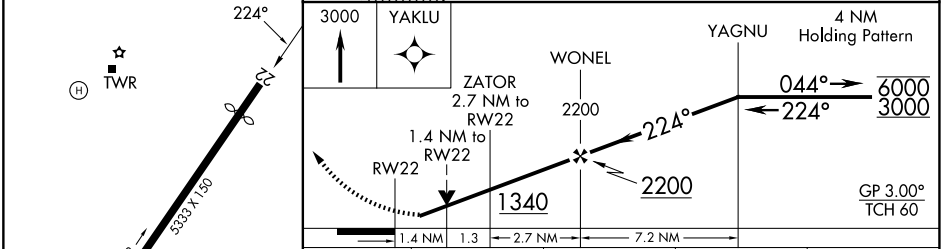
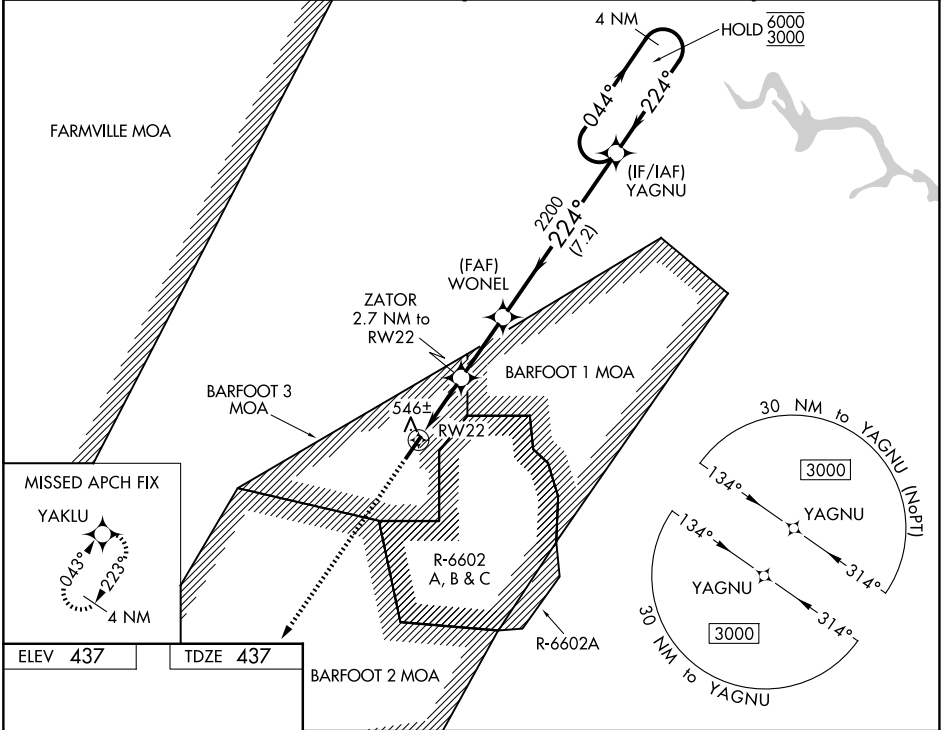
WAAS CH <b>53734</b> <b>W22A</b>	APP CRS <b>224°</b>	Rwy Ldg <b>4633</b> TDZE <b>437</b> Apt Elev <b>437</b>
--	------------------------	---

# RNAV (GPS) RWY 22

ALLAN C PERKINSON/BLACKSTONE AAF (BKT)

RNP APCH - GPS.	<p><b>⚠</b> For uncompensated Baro-VNAV systems, LNAV/VNAV NA below -1.5°C or above 54°C. Circling NA southeast of Rwy 4-22. Rwy 22 helicopter visibility reduction below ¼ SM NA.</p>	<p><b>MISSED APPROACH:</b> Climb to 3000 direct YAKLU and hold.</p>
-----------------	--	---

ATIS <b>119.225</b>	WASHINGTON CENTER <b>118.75 377.1</b>	BLACKSTONE TOWER ★ <b>134.7 (CTAF) 0 292.7</b>	GND CON <b>127.625</b>
------------------------	--	---	---------------------------



CATEGORY	A	B	C	D
LPV DA		698-1	261 (300-1)	NA
LNAV/VNAV DA		698-1	261 (300-1)	NA
LNAV MDA	940-1	503 (600-1)	940-1 3/8 503 (600-1 3/8)	NA
CIRCLING	940-1	503 (600-1)	1000-1 1/2 563 (600-1 1/2)	NA

NE-3, 16 APR 2026 to 14 MAY 2026

NE-3, 16 APR 2026 to 14 MAY 2026