

WAAS CH <b>45626</b> <b>W26A</b>	APP CRS <b>246°</b>	Rwy Idg TDZE Apt Elev	<b>6543</b> <b>396</b> <b>400</b>
--	------------------------	-----------------------------	---

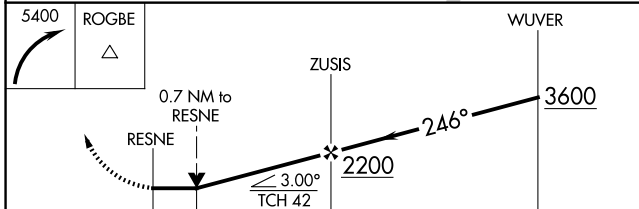
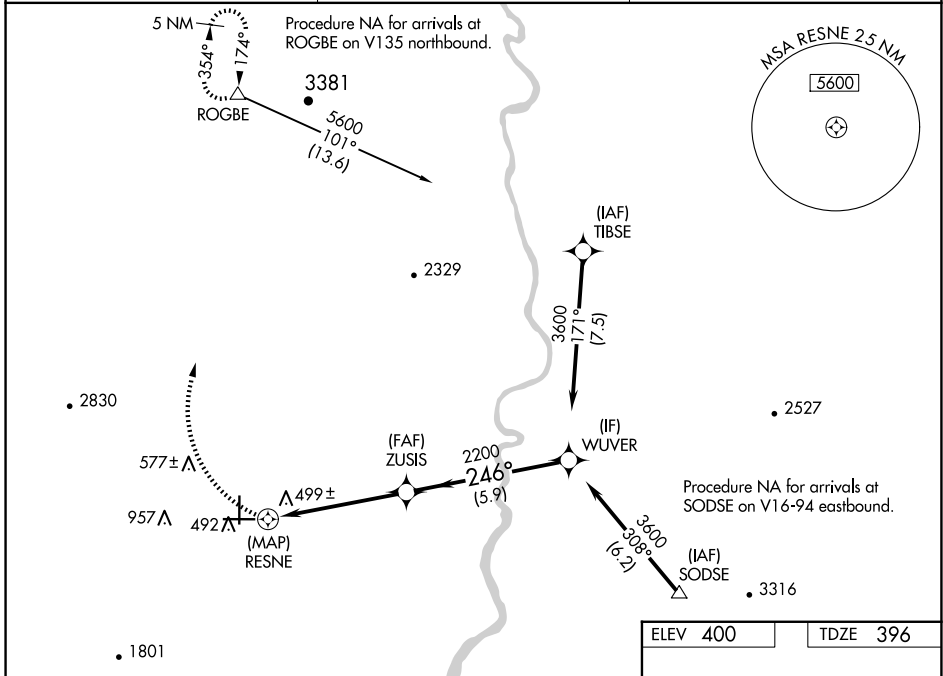
# RNAV (GPS) RWY 26

BLYTHE (BLH)

**⚠** When local altimeter setting not received, procedure NA.  
**⚠** DME/DME RNP-0.3 NA. Helicopter visibility reduction below 3/4 SM NA.  
 #Missed approach requires a minimum climb of 375 feet per NM to 3500.  
 \*Missed approach requires a minimum climb of 345 feet per NM to 3500.

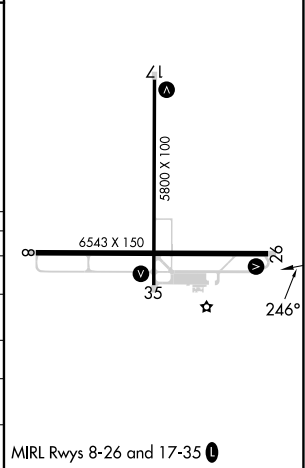
MISSED APPROACH: Climbing right turn to 5400 direct ROGBE and hold, continue climb-in-hold to 5400.

ASOS <b>120.175</b>	LOS ANGELES CENTER <b>128.15 285.6</b>	UNICOM <b>122.8 (CTAF) 0</b>
------------------------	---	---------------------------------



ELEV 400	TDZE 396
----------	----------

CATEGORY	A	B	C	D
*LP MDA	800-1 404 (400-1)		800-1 1/8 404 (400-1 1/8)	
LP MDA	1940-1 1/4 1544 (1600-1 1/4)	1940-1 1/2 1544 (1600-1 1/2)	1940-3 1544 (1600-3)	
# LNAV MDA	800-1 404 (400-1)		800-1 1/8 404 (400-1 1/8)	
LNAV MDA	2060-1 1/4 1664 (1700-1 1/4)	2060-1 1/2 1664 (1700-1 1/2)	2060-3 1664 (1700-3)	
CIRCLING	2060-1 1/4 1660 (1700-1 1/4)	2060-1 1/2 1660 (1700-1 1/2)	2060-3 1660 (1700-3)	



SW-3, 16 APR 2026 to 14 MAY 2026

SW-3, 16 APR 2026 to 14 MAY 2026