

LOC/DME I-BYH <b>110.3</b> Chan <b>40</b>	APP CRS <b>181°</b>	Rwy ldg <b>11602</b> TDZE <b>250</b> Apt Elev <b>254</b>
---	------------------------	--

# ILS or LOC RWY 18

ARKANSAS INTL (BYH)

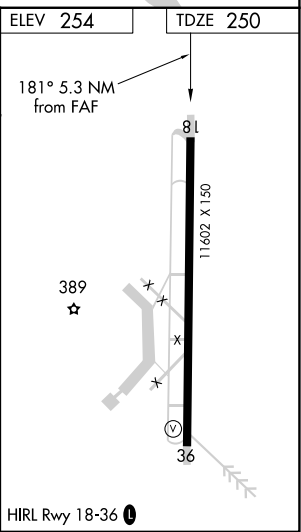
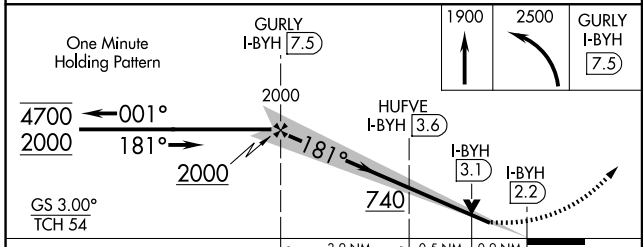
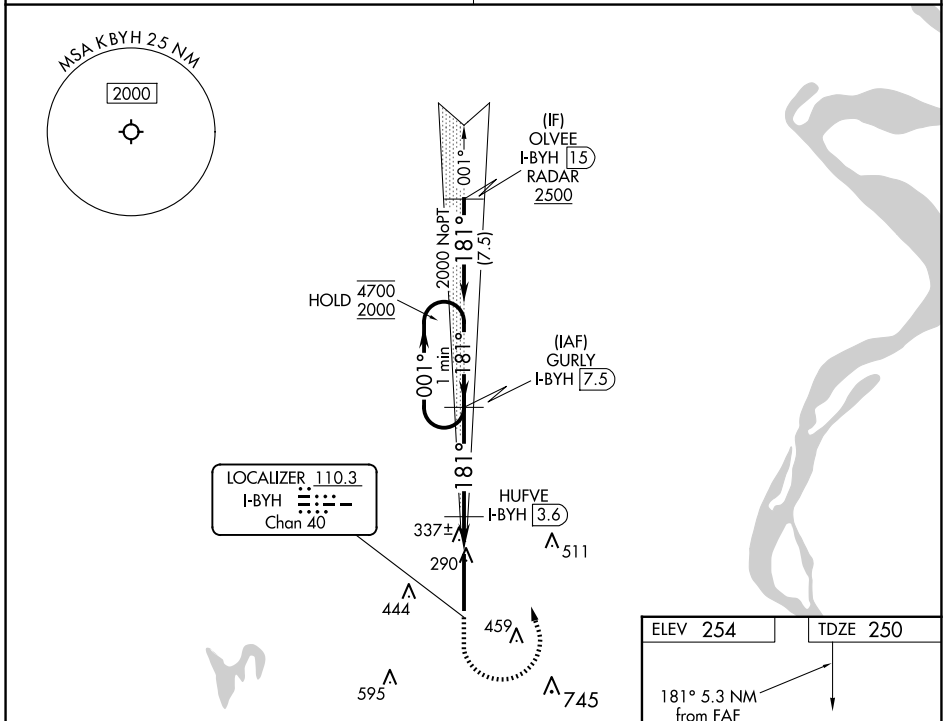
**RADAR** required for procedure entry. RNP APCH-GPS and DME required.

**▽** Obtain local altimeter setting on CTAF, when not received, use Blytheville Muni altimeter setting and increase DA to 464 feet and all MDAs 20 feet.

**△NA** Circling NA east of Rwy 18-36.

**MISSED APPROACH:** Climb to 1900 then climbing left turn to 2500 direct GURLY and hold.

<b>MEMPHIS CENTER</b> <b>134.65 316.15</b>	<b>UNICOM</b> <b>122.7 (CTAF) 0</b>
---	--



CATEGORY	A	B	C	D
S-ILS 18		450-3/4	200 (200-3/4)	
S-LOC 18		600-1	350 (400-1)	
<b>CIRCLING</b>	700-1 446 (500-1)	720-1 466 (500-1)	800-1 1/2 546 (600-1 1/2)	820-2 566 (600-2)

SC-1, 16 APR 2026 to 14 MAY 2026

SC-1, 16 APR 2026 to 14 MAY 2026