

WAAS CH <b>56419</b> <b>W35A</b>	APP CRS <b>353°</b>	Rwy Idg TDZE Apt Elev	<b>6099</b> <b>1238</b> <b>1258</b>
--	------------------------	-----------------------------	---

# RNAV (GPS) RWY 35

FREDERICK RGNL (F'DR)

RNP APCH-GPS.

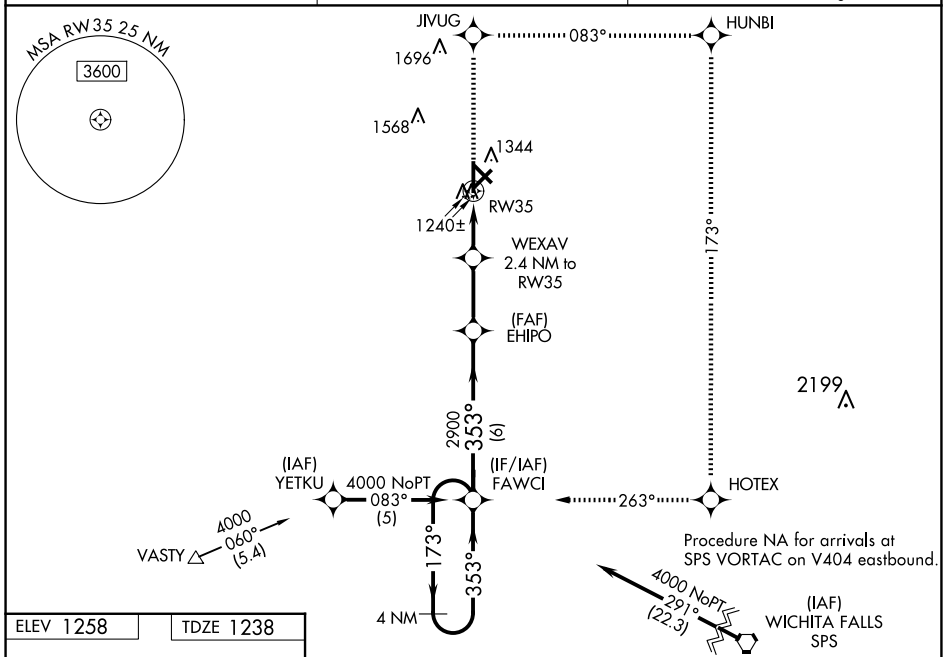
▼ For uncompensated Baro-VNAV systems, LNAV/VNAV NA below -17°C or above 46°C.  
 ▲ Baro-VNAV and VDP NA when using Vernon altimeter setting. When local altimeter setting not received, use Vernon altimeter setting: increase LPV DA to 1478 feet; increase LNAV/VNAV DA to 1540 feet; increase all MDAs 40 feet and visibility LNAV Cat C ¼ SM and Circling Cat D ½ SM. Circling Rwy 3, 12,17, 21, 30, NA at night.

MISSED APPROACH: Climb to 4000 direct JIVUG and right turn on track 083° to HUNBI and right turn on track 173° to HOTEK and right turn on track 263° to FAWCI and hold.

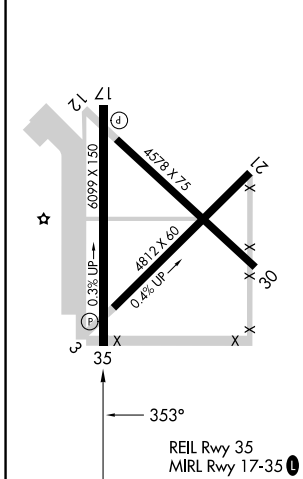
ASOS  
**132.675**

ALTUS APP CON ★  
**125.1 353.7**

UNICOM  
**123.05 (CTAF) 0**



ELEV 1258	TDZE 1238
-----------	-----------



4000	JIVUG	HUNBI	HOTEK	FAWCI
↑	↘ tr 083°	↘ tr 173°	↘ tr 263°	↘ tr 353°
4 NM Holding Pattern				
WEXAV 2.4 NM to RW35		EHIPO 2900	FAWCI 4000	
1 NM to RW35		2040	2900	
1 NM		1.4 NM	2.6 NM	6 NM
CATEGORY	A	B	C	D
LPV DA	1438-¾		200 (200-¾)	
LNAV/VNAV DA	1500-1		262 (300-1)	
LNAV MDA	1600-1		362 (400-1)	
CIRCLING	1700-1 442 (500-1)	1720-1 462 (500-1)	1880-1¾ 622 (700-1¾)	1900-2 642 (700-2)

SC-1, 16 APR 2026 to 14 MAY 2026

SC-1, 16 APR 2026 to 14 MAY 2026