

LOC/DME I-BOI 111.1 Chan 48	APP CRS 102°	Rwy Ldg 9763 TDZE 2836 Apt Elev 2872
---	------------------------	--

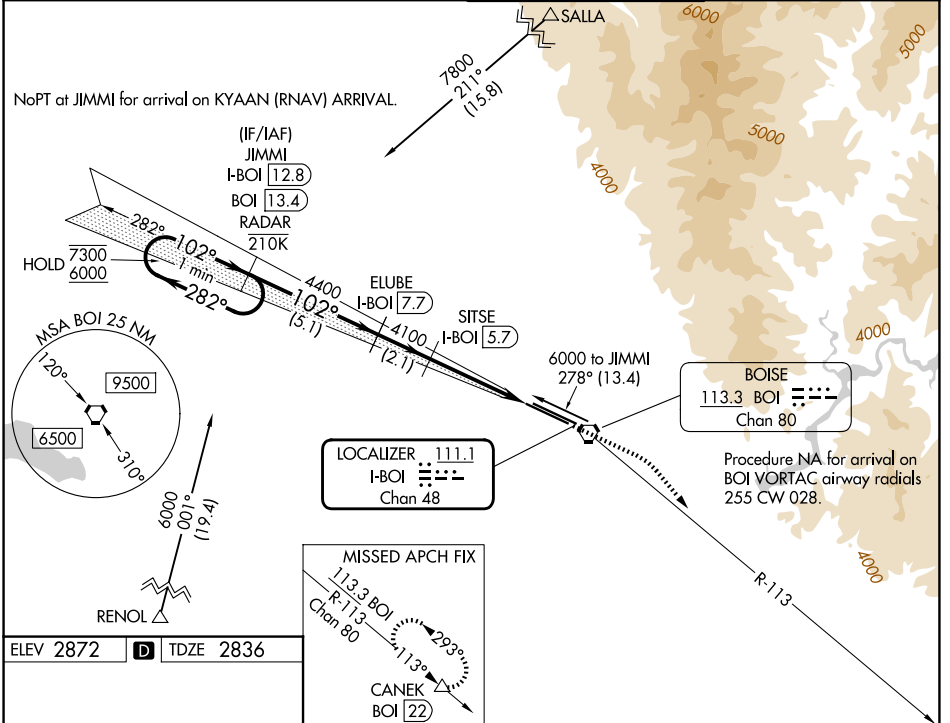
ILS Y RWY 10R (SA CAT I)

BOISE AIR TRML/GOWEN FLD (BOI)

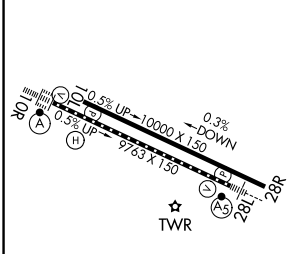
DME required. RNAV 1 - GPS. From SALLA and RENOL.
 Requires specific OPSPEC, MSPEC, or LOA approval and use of HUD to DH.

ALSF-2
 MISSED APPROACH: Climb to 3300 then dimbing right turn to 7300 on BOI VORTAC R-113 to CANEK/BOI VORTAC 22 DME and hold.

D-ATIS 123.9 290.4	BIG SKY APP CON 119.6 269.4	BOISE TOWER 118.1 257.8	GND CON 121.7 348.6
------------------------------	---------------------------------------	-----------------------------------	-------------------------------



ELEV 2872 **D** TDZE 2836



One Minute Holding Pattern	JIMMI I-BOI 12.8 BOI 13.4 RADAR	ELUBE I-BOI 7.7	SITSE I-BOI 5.7	3300	7300	CANEK
7300 ← 282°	6000 → 102°	102°	4400	4100	4100	Use I-BOI DME when on the localizer course.
5.1 NM		2.1 NM		3.8 NM		0.78 NM
CATEGORY	A	B	C	D		
S-ILS 10R	RA 181/14 150 DA 2986					

REIL Rwy 10L
 TDZ/CL Rwy 10R and 28L
 HIRL Rwy 10L-28R and 10R-28L

SA CATEGORY I ILS - SPECIAL AIRCREW & AIRCRAFT CERTIFICATION REQUIRED

NW-1, 16 APR 2026 to 14 MAY 2026

NW-1, 16 APR 2026 to 14 MAY 2026