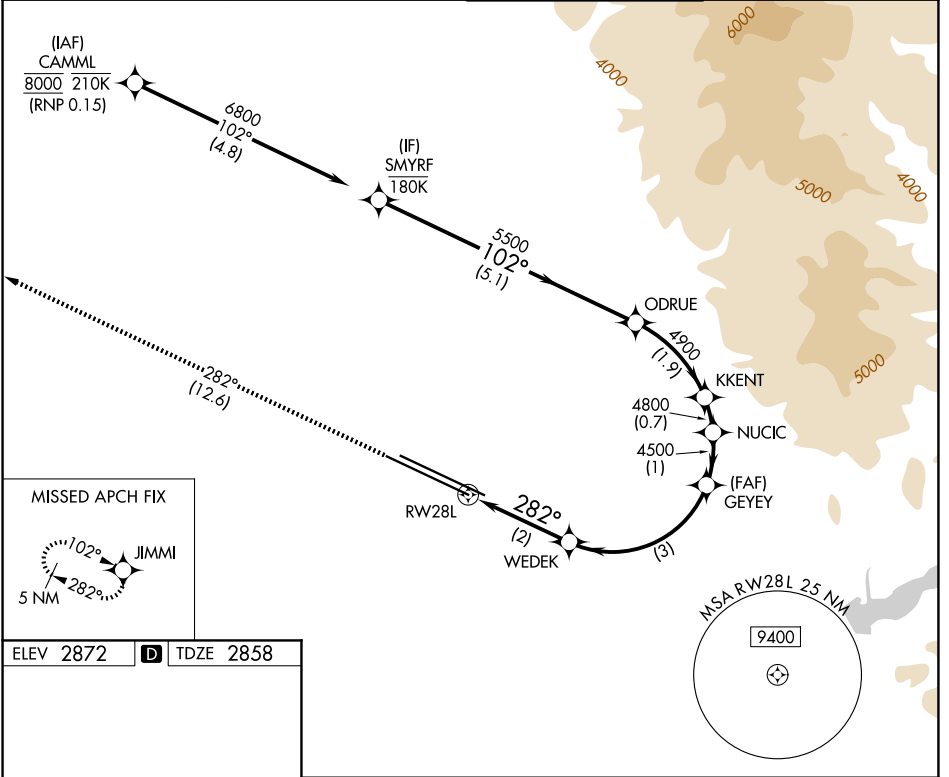


APP CRS	Rwy Ldg	9763
282°	TDZE	2858
	Apt Elev	2872

RNAV (RNP) X RWY 28L

BOISE AIR TRML/GOWEN FLD (BOI)

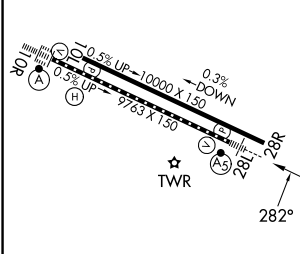
RNP AR APCH - GPS.		MALSR	MISSED APPROACH: Climb to 6000 on track 282° to JIMMI and hold, continue climb-in-hold to 6000.
▼ For uncompensated Baro-VNAV systems, procedure NA below -14°C or above 54°C.			
D-ATIS	BIG SKY APP CON	BOISE TOWER	GND CON
123.9 290.4	119.6 269.4	118.1 257.8	121.7 348.6



NW-1, 16 APR 2026 to 14 MAY 2026

NW-1, 16 APR 2026 to 14 MAY 2026

ELEV 2872	D	TDZE 2858
-----------	----------	-----------



6000	JIMMI	VGSi and RNAV glidepath not coincident (VGSi Angle 3.00/TCH 50).				SMYRF
tr 282°		WEDEK	GYEY	NUCIC	KKENT	ODRUE
		3545	4500	4800	4900	5500
		2 NM	3 NM	1 NM	0.7 NM	1.9 NM
						5.1 NM
						6800
						GP 3.00° TCH 50
CATEGORY	A	B	C	D		
RNP 0.15 DA	3229/35 371 (400- $\frac{1}{2}$)					

REL Rwy 10L
 TDZ/CL Rwy 10R and 28L
 HIRL Rwy 10L-28R and 10R-28L

AUTHORIZATION REQUIRED