

APP CRS 282°	Rwy Ldg 10000
	TDZE 2871
	Apt Elev 2871

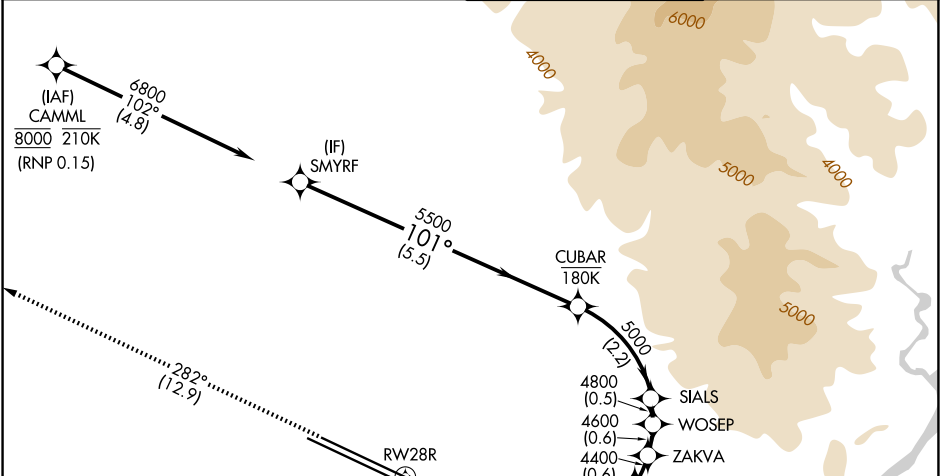
RNAV (RNP) X RWY 28R

BOISE AIR TRML/GOWEN FLD (BOI)

NA For uncompensated Baro-VNAV systems, procedure NA below -1.4°C (7°F) or above 52°C (126°F). RF required. GPS required.

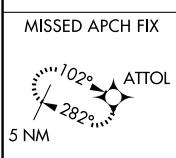
MISSED APPROACH: Climb to 6000 on track 282° to ATTOL and hold.

D-ATIS 123.9 290.4	BIG SKY APP CON 119.6 269.4	BOISE TOWER 118.1 257.8	GND CON 121.7 348.6
------------------------------	---------------------------------------	-----------------------------------	-------------------------------



NW-1, 16 APR 2026 to 14 MAY 2026

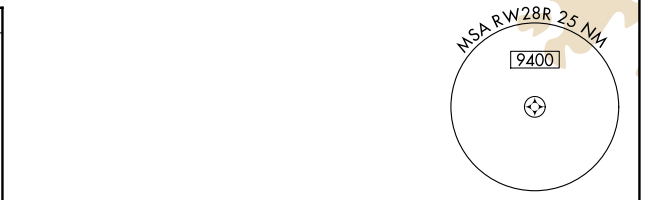
NW-1, 16 APR 2026 to 14 MAY 2026



ELEV 2871	D	TDZE 2871
-----------	----------	-----------



REIL Rwy 10L
TDZ/CL Rwys 10R and 28L
HIRL Rwys 10L-28R and 10R-28L



6000	ATTOL	VGSI and RNAV glidepath not coincident (VGSI Angle 3.00/TCH 70).				SMYRF
tr 282°		OGUVE	ZAKVA	WOSEP	SIALS	CUBAR
		4400	4600	4800	5000	5500
		3548	4400	4800	5000	5500
		2 NM	2.7 NM	0.6 NM	0.6 NM	0.5 NM
						2.2 NM
						5.5 NM
						6800
						GP 3.00°
						TCH 55

CATEGORY	A	B	C	D
RNP 0.15 DA	3288-1 ³ / ₈		417 (500-1 ³ / ₈)	

AUTHORIZATION REQUIRED