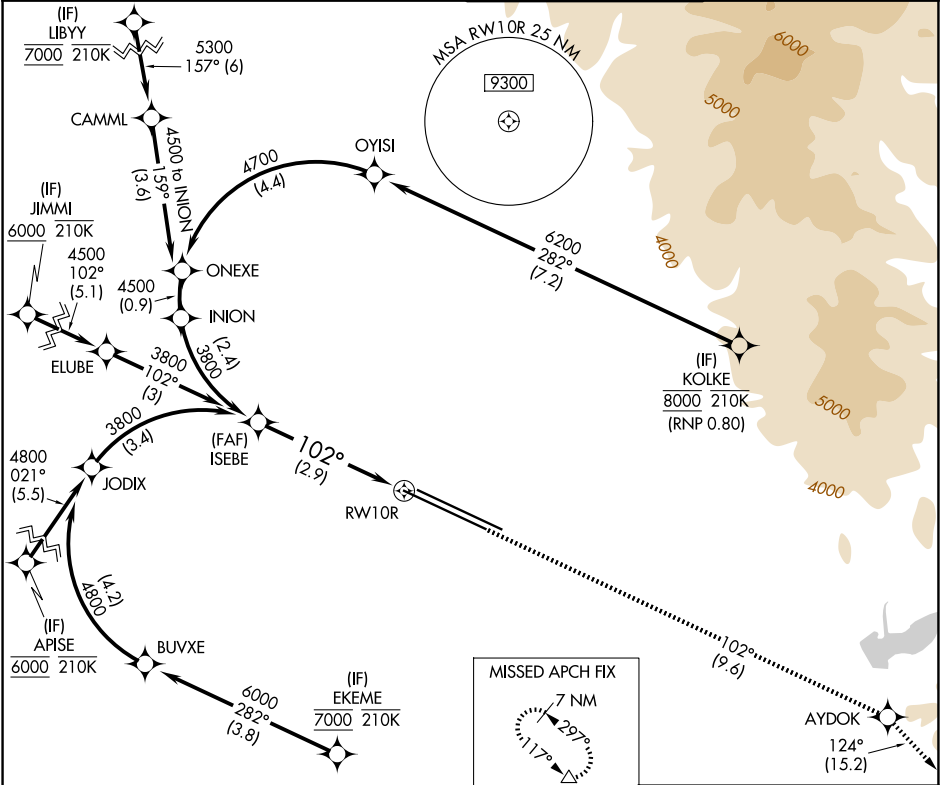


# RNAV (RNP) Z RWY 10R

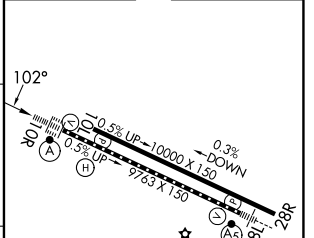
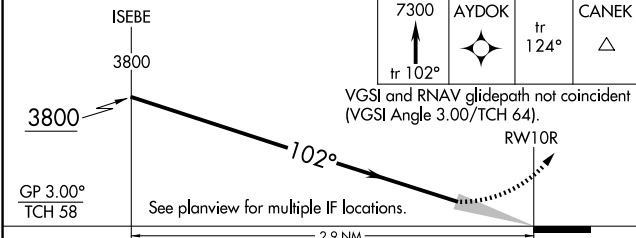
BOISE AIR TRML/GOWEN FLD (BOI)

APP CRS	Rwy Ldg	<b>9763</b>
<b>102°</b>	TDZE	<b>2836</b>
	Apt Elev	<b>2872</b>

RNP AR APCH - GPS.		ALSF-2	MISSED APPROACH: Climb to 7300 on track 102° to AYDOK and on track 124° to CANEK and hold.
<p>▼ For uncompensated Baro-VNAV systems, procedure NA below -14°C or above 54°C.</p>			
D-ATIS	BIG SKY APP CON	BOISE TOWER	GND CON
<b>123.9 290.4</b>	<b>119.6 269.4</b>	<b>118.1 257.8</b>	<b>121.7 348.6</b>



ELEV 2872	<b>D</b> TDZE 2836
-----------	--------------------



CATEGORY	A	B	C	D
RNP 0.30 DA	3219/35		383 (400-5%)	

## AUTHORIZATION REQUIRED

REIL Rwy 10L  
 TDZ/CL Rwy 10R and 28L  
 HIRL Rwy 10L-28R and 10R-28L

NW-1, 16 APR 2026 to 14 MAY 2026

NW-1, 16 APR 2026 to 14 MAY 2026