

WAAS CH <b>78102</b> <b>W10A</b>	APP CRS <b>102°</b>	Rwy Ldg <b>10000</b> TDZE <b>2844</b> Apt Elev <b>2872</b>
--	------------------------	--

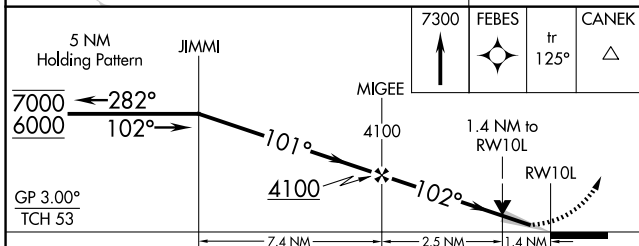
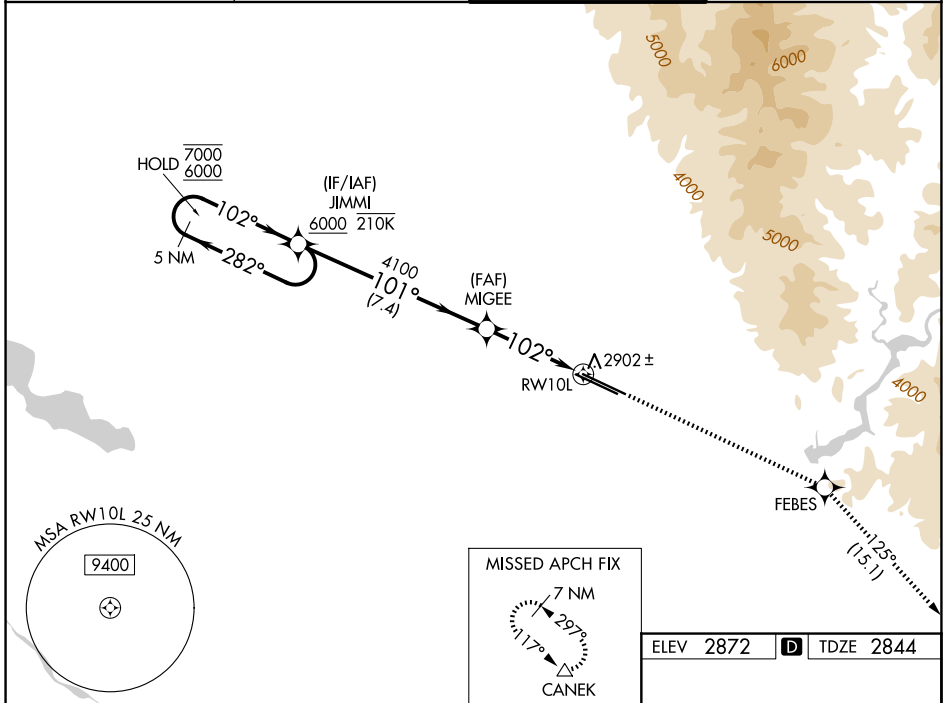
# RNAV (GPS) Y RWY 10L

BOISE AIR TRML/GOWEN FLD (BOI)

RADAR required for procedure entry. RNP APCH - GPS.  
 ⚠ Circling NA north of Rwy 10L-28R. For uncompensated Baro-VNAV systems, LNAV/VNAV NA below -14°C or above 54°C.

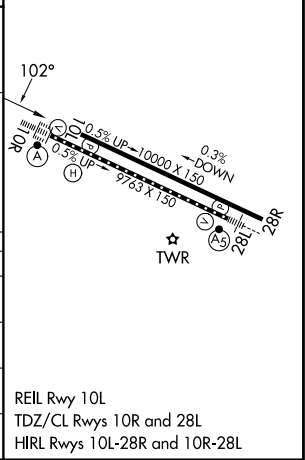
MISSED APPROACH: Climb to 7300 direct FEBES then on track 125° to CANEK and hold.

D-ATIS <b>123.9 290.4</b>	BIG SKY APP CON <b>119.6 269.4</b>	BOISE TOWER <b>118.1 257.8</b>	GND CON <b>121.7 348.6</b>
------------------------------	---------------------------------------	-----------------------------------	-------------------------------



ELEV 2872	<b>D</b> TDZE 2844
-----------	--------------------

CATEGORY	A	B	C	D
LPV DA	3044- <sup>3</sup> / <sub>4</sub> 200 (200- <sup>3</sup> / <sub>4</sub> )			
LNAV/VNAV DA	3197-1 353 (400-1)			
LNAV MDA	3320-1 476 (500-1)		3320-1 <sup>3</sup> / <sub>8</sub> 476 (500-1 <sup>3</sup> / <sub>8</sub> )	
CIRCLING	3440-1 568 (600-1)		3640-2 <sup>1</sup> / <sub>4</sub> 768 (800-2 <sup>1</sup> / <sub>4</sub> ) 3820-3 948 (1000-3)	



NW-1, 16 APR 2026 to 14 MAY 2026

NW-1, 16 APR 2026 to 14 MAY 2026