

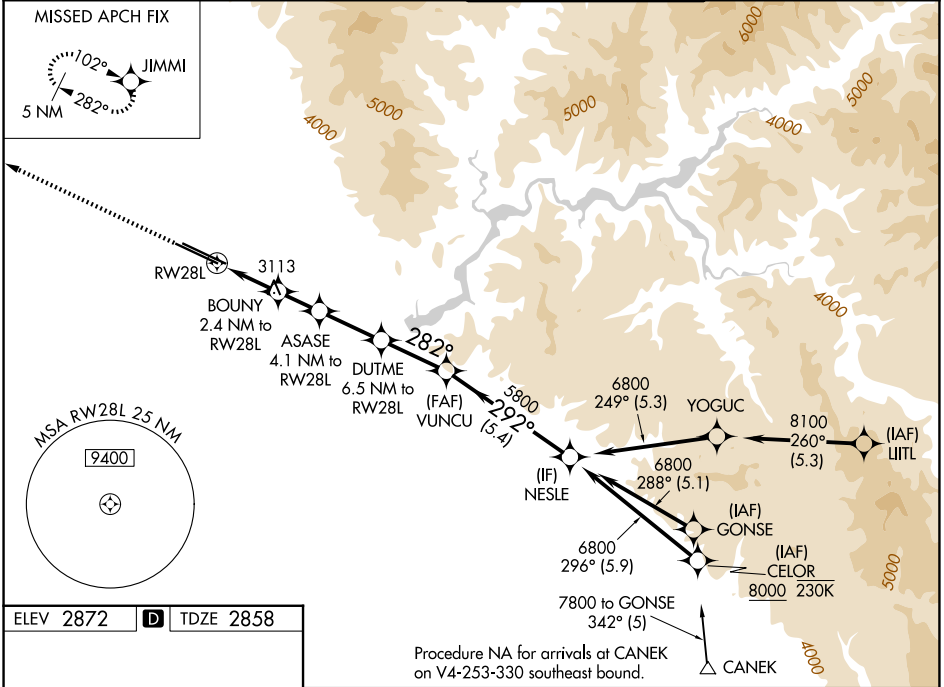
WAAS CH <b>7702</b> <b>W28A</b>	APP CRS <b>282°</b>	Rwy Ldg TDZE Apt Elev	<b>9763</b> <b>2858</b> <b>2872</b>
---------------------------------------	------------------------	-----------------------------	---

# RNAV (GPS) Y RWY 28L

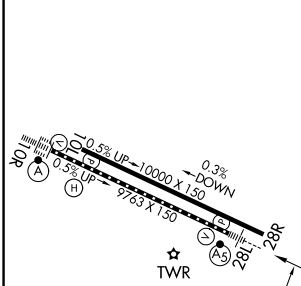
BOISE AIR TRML/GOWEN FLD (BOI)

RNP APCH - GPS.	MALSR 	MISSED APPROACH: Climb to 6000 direct JIMMI and hold, continue climb-in-hold to 6000.
Circling NA north of Rwy 10L-28R. For uncompensated Baro-VNAV systems, LNAV/VNAV NA below -14°C or above 54°C. For inop ALS, increase LPV all Cats visibility to RVR 4500, and LNAV/VNAV all Cats visibility to RVR 6000.		

D-ATIS <b>123.9 290.4</b>	BIG SKY APP CON <b>119.6 269.4</b>	BOISE TOWER <b>118.1 257.8</b>	GND CON <b>121.7 348.6</b>
------------------------------	---------------------------------------	-----------------------------------	-------------------------------



ELEV 2872	<b>D</b>	TDZE 2858
-----------	----------	-----------



6000	JIMMI	VGSi and RNAV glidepath not coincident (VGSi Angle 3.00/TCH 50).		NESLE
		BOUNY 1.4 NM to RWY28L	ASASE 4.1 NM to RWY28L	DUTME 6.5 NM to RWY28L
		VUNCU 5800		6800
		3680	4200	4980
		1.4 NM	1.6 NM	2.5 NM
		1 NM	2.6 NM	5.4 NM
		282°	282°	292°
				GP 3.00° TCH 50

	CATEGORY	A	B	C	D
LPV	DA		3160/24	302 (300-½)	
LNAV/VNAV	DA		3267/40	409 (400-¾)	
LNAV	MDA	3380/24	522 (600-½)	3380/55	522 (600-1)
CIRCLING		3440-1	568 (600-1)	3640-2¼ 768 (800-2¼)	3820-3 948 (1000-3)

REIL Rwy 10L  
TDZ/CL Rwys 10R and 28L  
HIRL Rwys 10L-28R and 10R-28L

NW-1, 16 APR 2026 to 14 MAY 2026

NW-1, 16 APR 2026 to 14 MAY 2026