

WAAS CH <b>65803</b> <b>W28B</b>	APP CRS <b>282°</b>	Rwy Ldg TDZE Apt Elev	<b>10000</b> <b>2871</b> <b>2871</b>
--	------------------------	-----------------------------	--

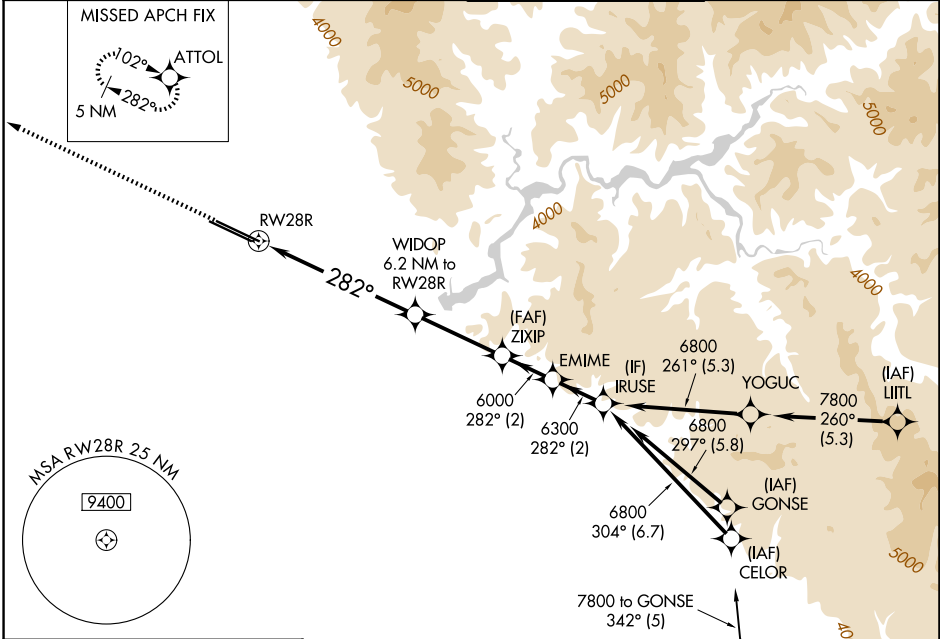
# RNAV (GPS) Y RWY 28R

BOISE AIR TRML/GOWEN FLD (BOI)

**⚠** For uncompensated Baro-VNAV systems, LNAV/VNAV NA below -12°C (11°F) or above 52°C (126°F).  
Circling NA north of Rwy 10L-28R. DME/DME RNP-0.3 NA.

MISSED APPROACH: Climb to 6000 direct ATTOL and hold, continue climb-in-hold to 6000.

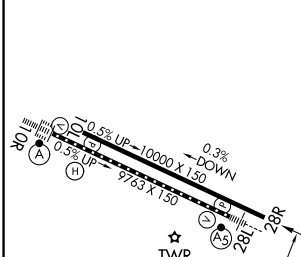
D-ATIS <b>123.9 290.4</b>	BIG SKY APP CON <b>119.6 269.4</b>	BOISE TOWER <b>118.1 257.8</b>	GND CON <b>121.7 348.6</b>
------------------------------	---------------------------------------	-----------------------------------	-------------------------------



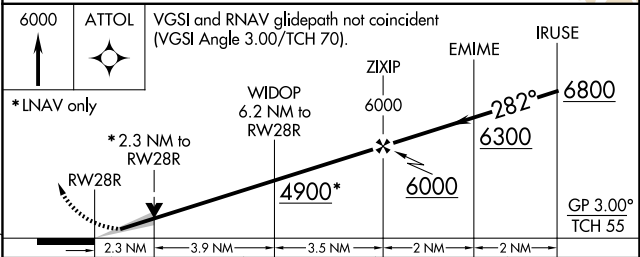
NW-1, 16 APR 2026 to 14 MAY 2026

NW-1, 16 APR 2026 to 14 MAY 2026

ELEV 2871	<b>D</b>	TDZE 2871
-----------	----------	-----------



REIL Rwy 10L	TDZ/CL Rwys 10R and 28L	HIRL Rwys 10L-28R and 10R-28L
--------------	-------------------------	-------------------------------



	CATEGORY	A	B	C	D
LPV	DA		3121-3/4	250 (300-3/4)	
LNAV/VNAV	DA		3199-1	328 (400-1)	
LNAV	MDA	3660-1 1/4	789 (800-1 1/4)	3660-2 1/2	789 (800-2 1/2)
CIRCLING		3660-1 1/4	789 (800-1 1/4)	3740-2 1/2 869 (900-2 1/2)	3820-3 949 (1000-3)