

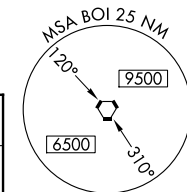
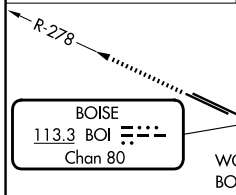
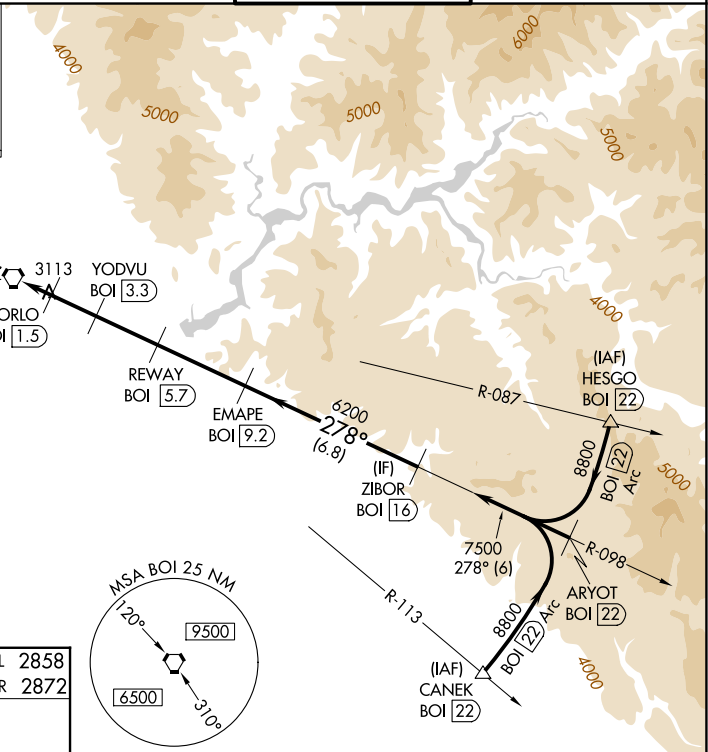
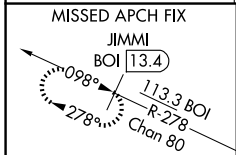
VORTAC BOI 113.3 Chan 80	APP CRS 278°	Rwy Ldg TDZE Apt Elev	28L 9763 2858 2872	28R 10000 2872 2872
---------------------------------------	------------------------	-----------------------------	--	---

VOR Y or TACAN Y RWY 28L

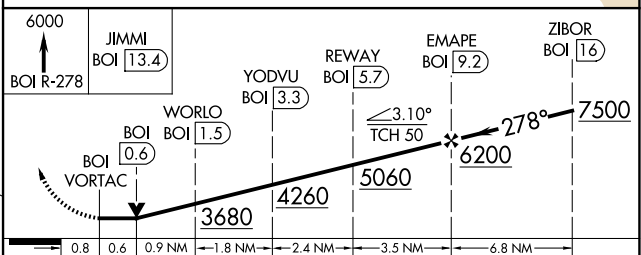
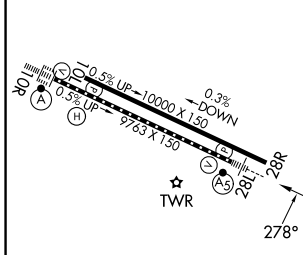
BOISE AIR TRML/GOWEN FLD (BOI)

DME required.	MALSR Rwy 28L	MISSED APPROACH: Climb to 6000 on BOI VORTAC R-278 to JIMMI/13.4 DME and hold.
<p>Circling NA north of Rwy 10L-28R. For inop ALS, increase S-28L Cat E visibility to 1 1/2 SM.</p>		

D-ATIS 123.9 290.4	BIG SKY APP CON 119.6 269.4	BOISE TOWER 118.1 257.8	GND CON 121.7 348.6
------------------------------	---------------------------------------	-----------------------------------	-------------------------------



ELEV 2872	D TDZE 28L 2858
	TDZE 28R 2872



CATEGORY	A	B	C	D	E
S-28L	3380/24	522 (600-1/2)	3380/55	522 (600-1)	
SIDESTEP 28R	3380-1 3/8	508 (600-1 3/8)	3380-1 7/8	3380-2 1/2	508 (600-2 1/2)
CIRCLING	3440-1	568 (600-1)	3640-2 1/4	3820-3	3880-3
			768 (800-2 1/4)	948 (1000-3)	1008 (1100-3)

REIL Rwy 10L
TDZ/CL Rws 10R and 28L
HIRL Rws 10L-28R and 10R-28L

NW-1, 16 APR 2026 to 14 MAY 2026

NW-1, 16 APR 2026 to 14 MAY 2026