

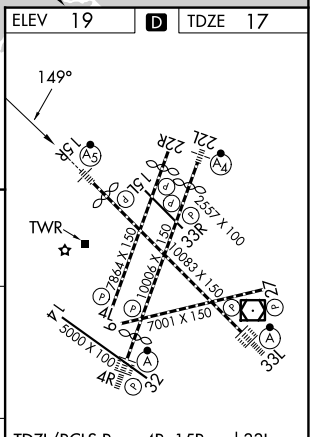
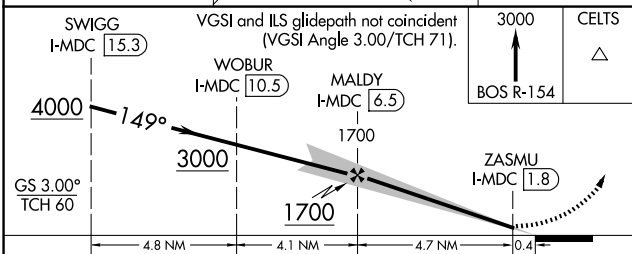
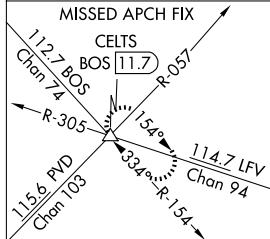
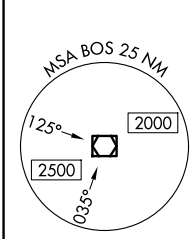
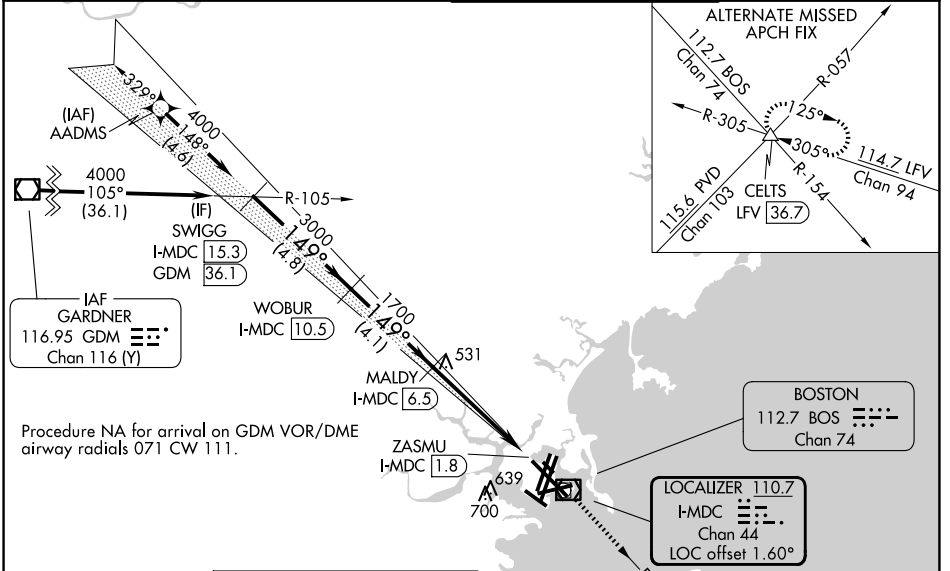
LOC/DME I-MDC	APP CRS	Rwy Ldg	<b>9201</b>
<b>110.7</b>	<b>149°</b>	TDZE	<b>17</b>
Chan <b>44</b>		Apt Elev	<b>19</b>

# ILS or LOC RWY 15R

GENERAL EDWARD LAWRENCE LOGAN INTL (BOS)

RNP APCH - GPS. From AADMS.	MALSR	MISSED APPROACH: Climb to 3000 on BOS VOR/DME R-154 to CELTS INT/BOS 11.7 DME and hold.
DME required.		
For inop ALS, increase S-LOC 15R Cats C/D visibility to 1 1/2 SM.		

D-ATIS <b>135.0</b>	BOSTON APP CON <b>120.6 263.1</b>	BOSTON TOWER <b>128.8 257.8 (WEST)</b> <b>132.225 257.8 (EAST)</b>	GND CON <b>121.75 121.9</b>
------------------------	--------------------------------------	--	--------------------------------



CATEGORY	A	B	C	D
S-ILS 15R		267/24	250 (300-1/2)	
S-LOC 15R	580/24	563 (600-1/2)	580-1/4	563 (600-1/4)

TDZL/RCLS Rwy 4R, 15R and 33L  
REIL Rwy 4L, 27 and 32  
MIRL Rwy 15L-33R  
HIRL Rwy 4L-22R, 4R-22L, 9-27, 14-32 and 15R-33L

NE-1, 16 APR 2026 to 14 MAY 2026

NE-1, 16 APR 2026 to 14 MAY 2026