

LOC/DME I-LIP	APP CRS	Rwy Ldg	10083
110.7	330°	TDZE	16
Chan 44		Apt Elev	19

ILS or LOC RWY 33L

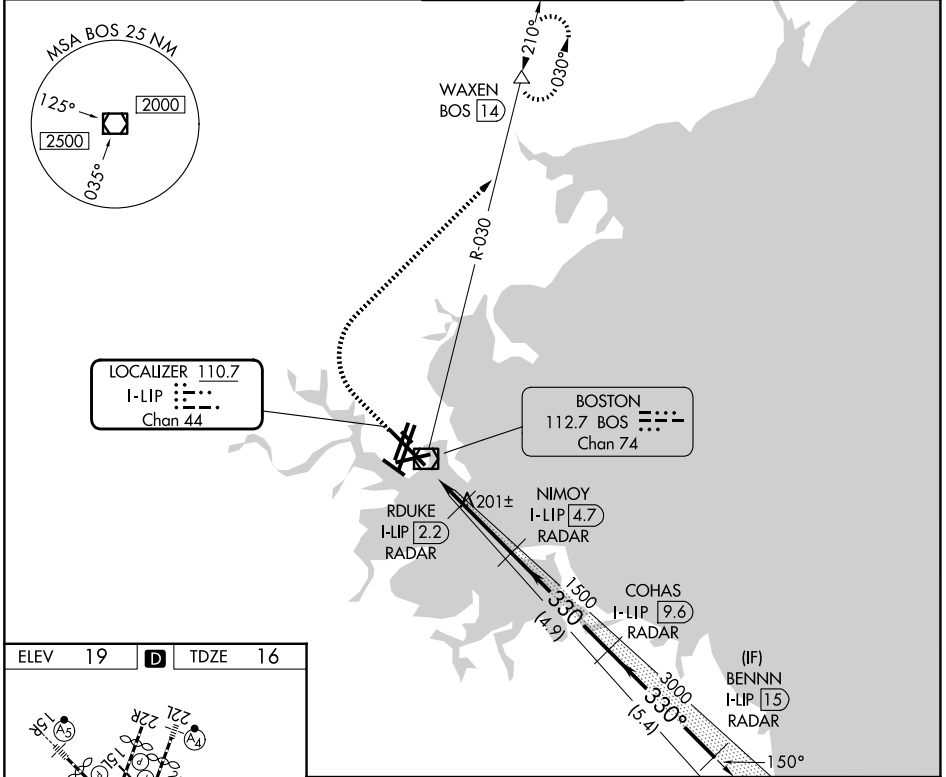
GENERAL EDWARD LAWRENCE LOGAN INTL (BOS)

RADAR required for procedure entry. DME required.

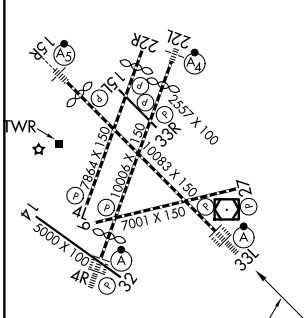
ALSF-2

MISSED APPROACH: Climb to 1500 then climbing right turn to 3000 on BOS VOR/DME R-030 to WAXEN/BOS 14 DME and hold.

D-ATIS	BOSTON APP CON	BOSTON TOWER	GND CON
135.0	120.6 263.1	128.8 257.8 (WEST) 132.225 257.8 (EAST)	121.75 121.9



ELEV 19	D	TDZE 16
---------	----------	---------



TDZL/RCLS Rwws 4R, 15R and 33L
REIL Rwws 4L, 27 and 32
MIRL Rwy 15L-33R
HIRL Rwws 4L-22R, 4R-22L, 9-27, 14-32 and 15R-33L

FAF to MAP 4.5 NM

Knots	60	90	120	150	180
Min:Sec	4:30	3:00	2:15	1:48	1:30

1500 3000 WAXEN

BOS R-030

VGSI and ILS glidepath not coincident (VGSI Angle 3.00/TCH 68).

BENNN I-LIP 15 RADAR	4000
COHAS I-LIP 9.6 RADAR	3000
NIMOY I-LIP 4.7 RADAR	1500
RDUKE I-LIP 2.2 RADAR	700
I-LIP 0.2	
I-LIP 1.4	

CATEGORY	A	B	C	D
S-ILS 33L	216/18 200 (200-½)			
S-LOC 33L	460/24	444 (500-½)	460/45 444 (500-¾)	

NE-1, 16 APR 2026 to 14 MAY 2026

NE-1, 16 APR 2026 to 14 MAY 2026