

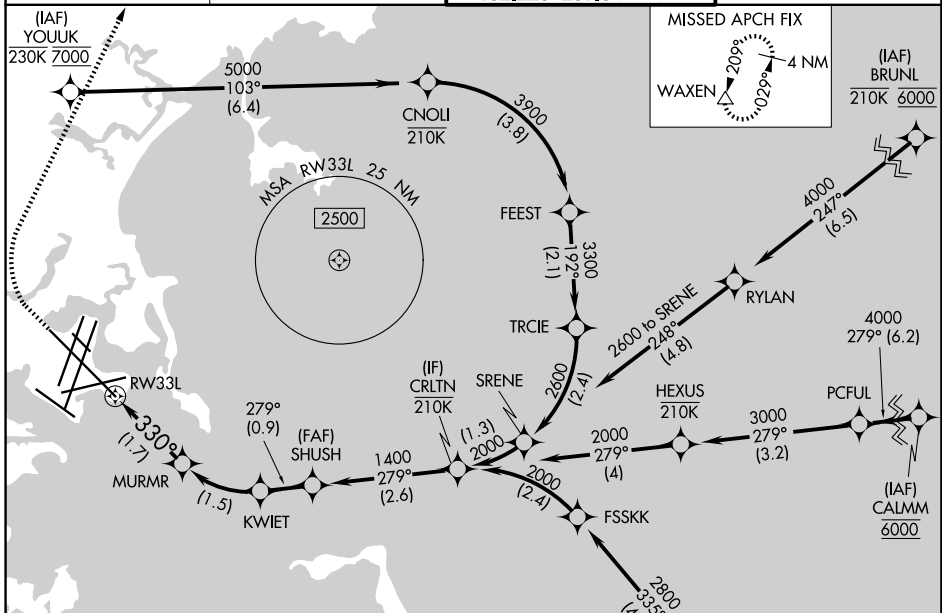
APP CRS	Rwy Ldg	10083
330°	TDZE	16
	Apft Elev	19

RNAV (RNP) X RWY 33L

GENERAL EDWARD LAWRENCE LOGAN INTL (BOS)

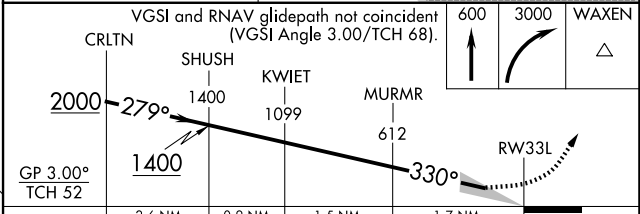
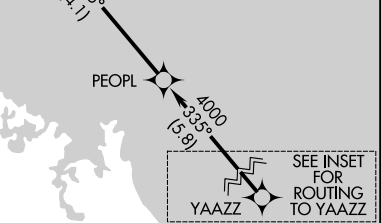
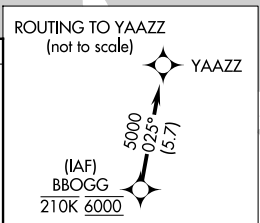
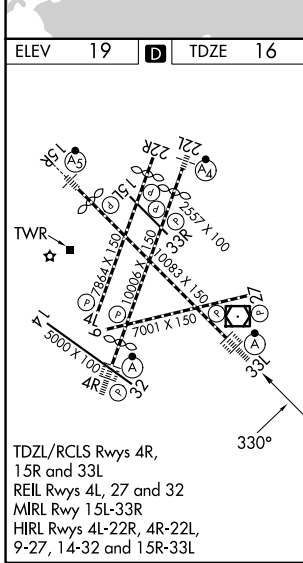
RNP AR APCH. RF required.	ALSF-2	MISSED APPROACH: Climb to 600 then climbing right turn to 3000 direct WAXEN and hold.
For uncompensated Baro-VNAV systems, procedure NA below -14°C or above 54°C. For inop ALS, increase RNP 0.30 all cats visibility to RVR 4000.		

D-ATIS 135.0	BOSTON APP CON 120.6 263.1	BOSTON TOWER 128.8 257.8 (WEST) 132.225 257.8 (EAST)	GND CON 121.75 121.9
------------------------	--------------------------------------	--	--------------------------------



NE-1, 16 APR 2026 to 14 MAY 2026

NE-1, 16 APR 2026 to 14 MAY 2026



CATEGORY	A	B	C	D
RNP 0.30 DA	273/24		257 (300-½)	

AUTHORIZATION REQUIRED