

WAAS CH 45925 W22A	APP CRS 215°	Rwy Ldg TDZE Apt Elev	8806 16 19
--	------------------------	-----------------------------	---------------------------------------

RNAV (GPS) X RWY 22L

GENERAL EDWARD LAWRENCE LOGAN INTL (BOS)

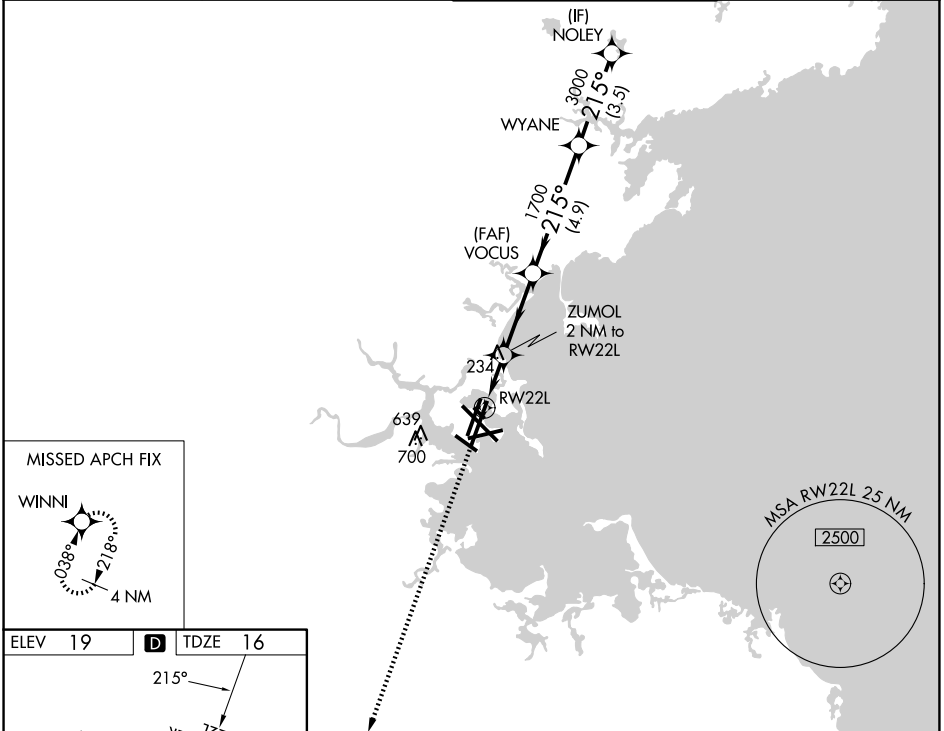
RNP APCH - GPS.

▼ For inop ALS, increase LNAV/VNAV Cat D visibility to RVR 6000 and LNAV Cat D visibility to 1½ SM. For uncompensated Baro-VNAV systems, LNAV/VNAV NA below -13°C or above 43°C.

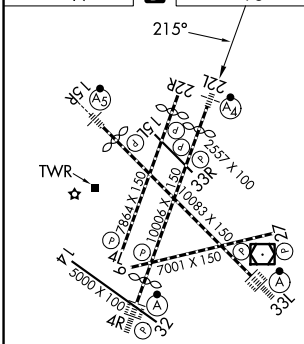


MISSED APPROACH:
Climb to 3000 direct
WINNI and hold.

D-ATIS 135.0	BOSTON APP CON 120.6 263.1	BOSTON TOWER 128.8 257.8 (WEST) 132.225 257.8 (EAST)	GND CON 121.75 121.9
------------------------	--------------------------------------	--	--------------------------------



ELEV 19	D	TDZE 16
---------	----------	---------



3000	WINNI	VGS1 and RNAV glidepath not coincident (VGS1 Angle 3.00/TCH 71).			
		ZUMOL 2 NM to RW22L	VOCUS 1700	WYANE 3000	NOLEY 4000
		1.4 NM to RW22L	1700	3000	4000
		700	1700		
		1.4 NM	0.6	3.1 NM	4.9 NM
				3.5 NM	
					GP 3.00° TCH 55

CATEGORY	A	B	C	D
LPV DA		216/40	200 (200-¾)	
LNAV/VNAV DA		408/50	392 (400-1)	
LNAV MDA	540/40	524 (600-¾)	540-1¼	524 (600-1¼)

TDZL/RCLS Rwys 4R, 15R and 33L
REIL Rwys 4L, 27 and 32
MIRL Rwy 15L-33R
HIRL Rwys 4L-22R, 4R-22L,
9-27, 14-32 and 15R-33L