

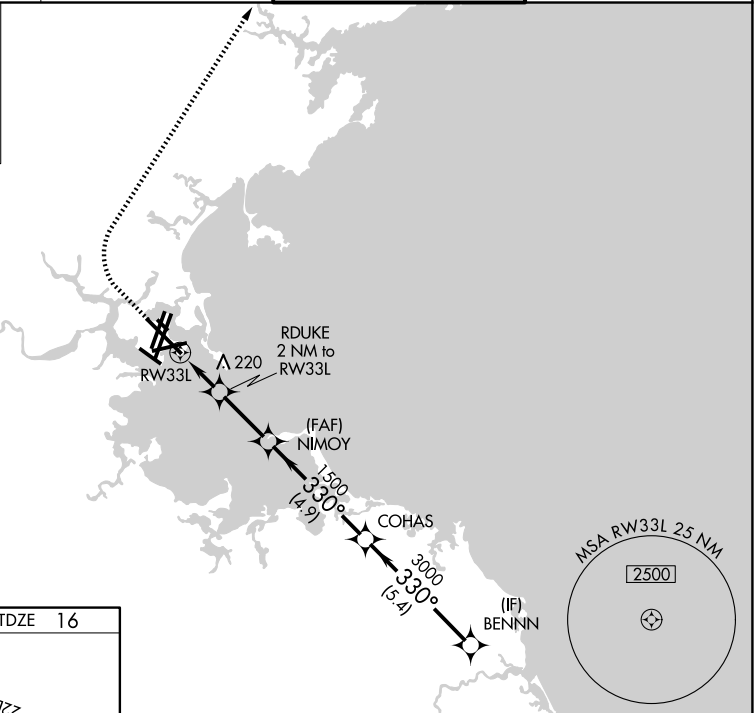
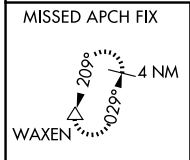
WAAS CH 69525 W33A	APP CRS 330°	Rwy Ldg TDZE 16 Apt Elev 19	10083
--	------------------------	---	--------------

RNAV (GPS) Z RWY 33L

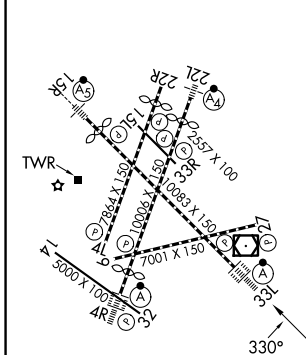
GENERAL EDWARD LAWRENCE LOGAN INTL (BOS)

RNP APCH - GPS.		ALSIF-2 	MISSED APPROACH: Climb to 600 then climbing right turn to 3000 direct WAXEN and hold.
▼ For uncompensated Baro-VNAV systems, LNAV/VNAV NA below -14°C or above 54°C.			

D-ATIS 135.0	BOSTON APP CON 120.6 263.1	BOSTON TOWER 128.8 257.8 (WEST) 132.225 257.8 (EAST)	GND CON 121.75 121.9
------------------------	--------------------------------------	--	--------------------------------



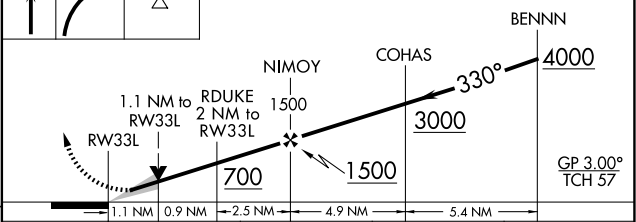
ELEV 19	D	TDZE 16
---------	----------	---------



TDZL/RCLS Rwy 4R, 15R and 33L
REIL Rwy 4L, 27 and 32
MIRL Rwy 15L-33R
HIRL Rwy 4L-22R, 4R-22L, 9-27, 14-32 and 15R-33L

600 3000 WAXEN

 VGSI and RNAV glidepath not coincident (VGSI Angle 3.00/TCH 68).



CATEGORY	A	B	C	D
LPV DA		216/18	200 (200-½)	
LNAV/VNAV DA		324/24	308 (400-½)	
LNAV MDA	440/24	424 (500-½)	440/40	424 (500-¾)

NE-1, 16 APR 2026 to 14 MAY 2026

NE-1, 16 APR 2026 to 14 MAY 2026