

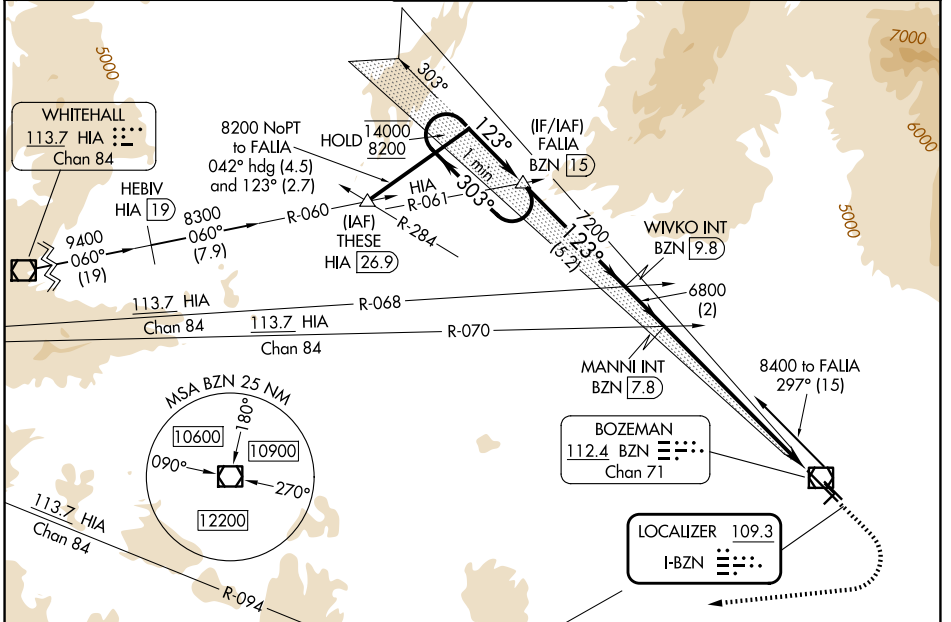
LOC I-BZN <b>109.3</b>	APP CRS <b>123°</b>	Rwy Ldg TDZE Apt Elev	<b>8994</b> <b>4443</b> <b>4473</b>
---------------------------	------------------------	-----------------------------	---

# ILS Y or LOC Y RWY 12

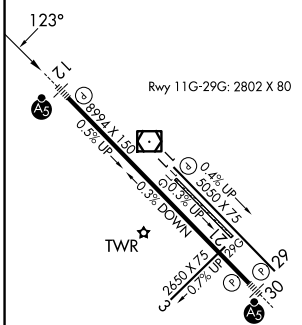
BOZEMAN YELLOWSTONE INTL (BZN)

<p>-21°C</p>	<p>Circling NA to Rwy 3-21 and 11-29. DME from BZN VOR/DME. DME use requires simultaneous reception of I-BZN and BZN DME. For inop ALS, increase S-LOC 12 Cat C/D visibility to 2 SM. *RVR 1800 authorized with use of FD or AP or HUD to DA.</p>	<p>MALS R</p>	<p>MISSED APPROACH: Climb to 5200 then climbing right turn to 9000 on heading 250° and on BZN VOR/DME R-223 to BRIGR INT/BZN VOR/DME 1.5 DME and hold, continue climb-in-hold to 9000.</p>
--------------	---	---------------	--

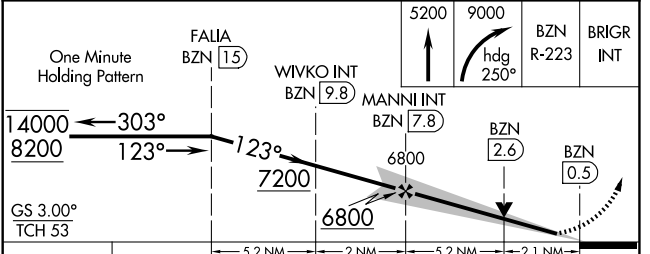
ATIS <b>135.425</b>	BIG SKY APP CON* <b>118.975 226.675</b>	BOZEMAN TOWER* <b>118.2 (CTAF) 0</b>	GND CON <b>121.8</b>	UNICOM <b>122.95</b>
------------------------	--	---	-------------------------	-------------------------



ELEV 4473	<b>D</b>	TDZE 4443
-----------	----------	-----------



HIRL Rwy 12-30	<b>0</b>
MIRL Rwy 11-29	<b>0</b>
FAF to MAP 7.3 NM	
Knots	60 90 120 150 180
Min:Sec	7:18 4:52 3:39 2:55 2:26



CATEGORY	A	B	C	D
S-ILS 12*	4643/24 200 (200-½)			
S-LOC 12	5160/24	717 (700-½)	5160-1½	717 (700-1½)
CIRCLING	5160-1	687 (700-1)	5160-2	5320-2¾ 847 (900-2¾)

NW-1, 16 APR 2026 to 14 MAY 2026

NW-1, 16 APR 2026 to 14 MAY 2026