

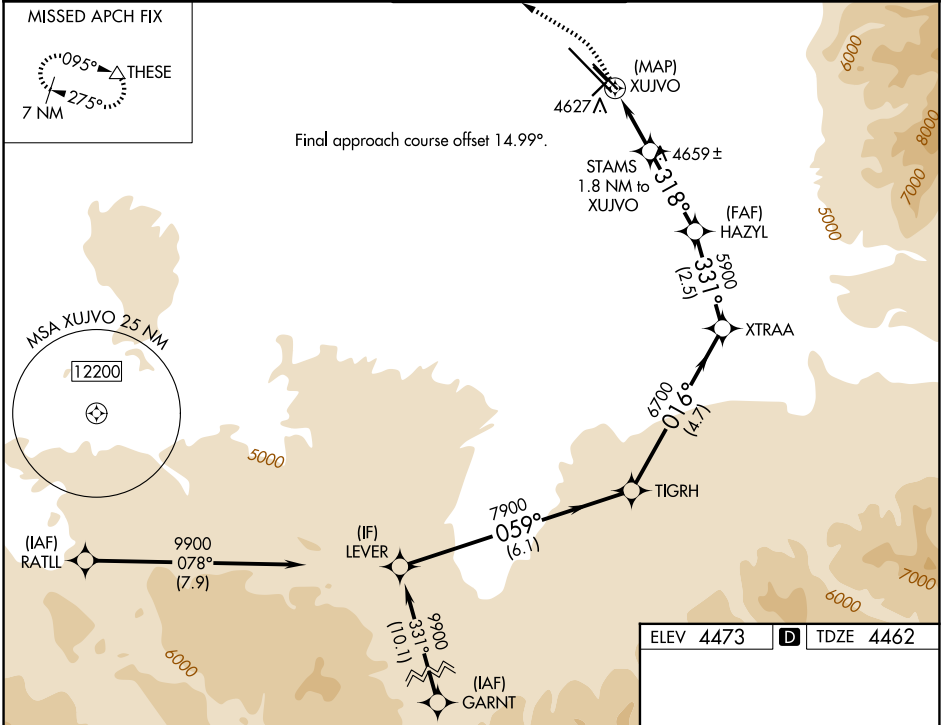
APP CRS <b>318°</b>	Rwy Ldg TDZE Apt Elev	<b>8994</b> <b>4462</b> <b>4473</b>
------------------------	-----------------------------	---

# RNAV (GPS) Y RWY 30

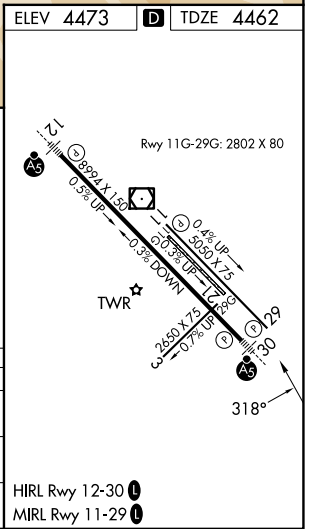
BOZEMAN YELLOWSTONE INTL (BZN)

RNP APCH - GPS.	MALSR	MISSED APPROACH: Climb to 5000 then climbing left turn to 10000 direct THESE and hold, continue climb-in-hold to 10000.
<p>▼ For uncompensated Baro-VNAV systems, LNAV/VNAV NA below -30°C or above 54°C.</p> <p>⚠ -21°C Circling NA to Rwy's 3, 11, 21 and 29.</p>		

ATIS <b>135.425</b>	BIG SKY APP CON * <b>118.975 226.675</b>	BOZEMAN TOWER * <b>118.2 (CTAF)</b>	GND CON <b>121.8</b>	UNICOM <b>122.95</b>
------------------------	---	--	-------------------------	-------------------------



5000	10000	THESE			
↑	↙	△			
STAMS 1.8 NM to XUJVO	HAZYL 5900	XTRAA 5700	TIGRH 7900	LEVER 9900	
XUJVO 1.2 NM to XUJVO	5120	5900	6700	9900	
1.2 NM	0.6	2.3 NM	2.5 NM	4.7 NM	6.1 NM
CATEGORY	A	B	C	D	
LNAV/VNAV DA	4880-1 1/8		418 (500-1 1/8)		
LNAV MDA	4880-1 418 (500-1)		4880-1 1/8 418 (500-1 1/8)		
CIRCLING	4940-1 467 (500-1)	4960-1 487 (500-1)	5160-2 687 (700-2)	5320-2 3/4 847 (900-2 3/4)	



NW-1, 16 APR 2026 to 14 MAY 2026

NW-1, 16 APR 2026 to 14 MAY 2026