

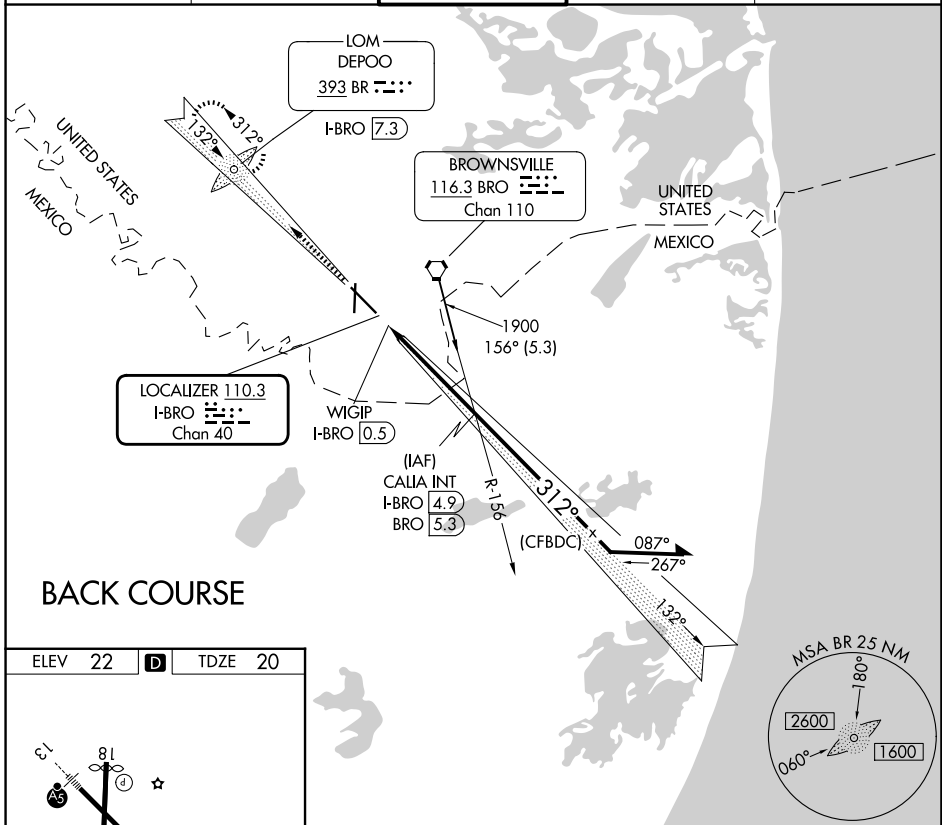
LOC/DME I-BRO <b>110.3</b> Chan <b>40</b>	APP CRS <b>312°</b>	Rwy Ldg <b>7399</b> TDZE <b>20</b> Apt Elev <b>22</b>
---	------------------------	---

**LOC BC RWY 31**  
BROWNSVILLE/SOUTH PADRE ISLAND INTL (BRO)

**⚠** Helicopter visibility reduction below ¼ SM NA. When local altimeter setting not received, use Port Isabel altimeter setting and increase all MDA 40 ft; increase Circling Cat D visibility ¼ mile. Circling to Rwy 18 NA at night. ADF or DME required. VDP NA when using Port Isabel altimeter setting.

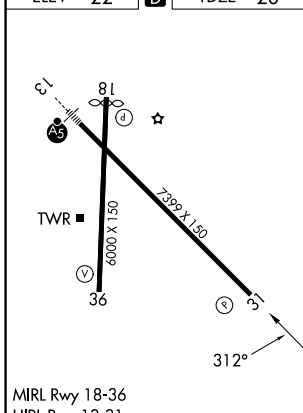
**⚠** MISSED APPROACH: Climb to 1900 on I-BRO localizer NW course (312°) to DEPOO LOM/ I-BRO 7.3 DME and hold.

ATIS <b>128.55</b>	VALLEY APP CON <b>119.5 257.6</b>	<b>BROWNSVILLE TOWER*</b> <b>118.9</b> (CTAF) <b>0 239.3</b>	GND CON <b>121.9</b>	UNICOM <b>122.95</b>
-----------------------	--------------------------------------	---	-------------------------	-------------------------

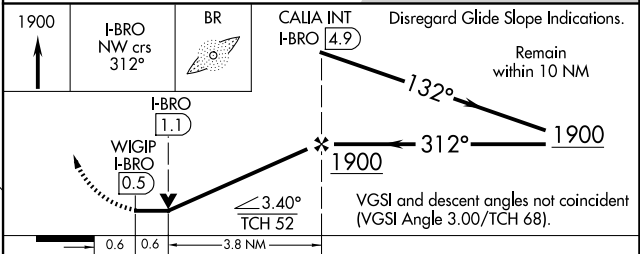


**BACK COURSE**

ELEV 22	<b>D</b>	TDZE 20
---------	----------	---------



FAF to MAP 4.4 NM					
Knots	60	90	120	150	180
Min:Sec	4:24	2:56	2:12	1:46	1:28



CATEGORY	A	B	C	D
S-31	480-1	460 (500-1)	480-1⅓	460 (500-1⅓)
CIRCLING	480-1 458 (500-1)	540-1 518 (600-1)	540-1½ 518 (600-1½)	680-2 658 (700-2)

SC-3, 16 APR 2026 to 14 MAY 2026

SC-3, 16 APR 2026 to 14 MAY 2026