

WAAS CH <b>93739</b> <b>W18A</b>	APP CRS <b>179°</b>	Rwy Ldg <b>5810</b> TDZE <b>20</b> Apt Elev <b>22</b>
--	------------------------	---

# RNAV (GPS) RWY 18

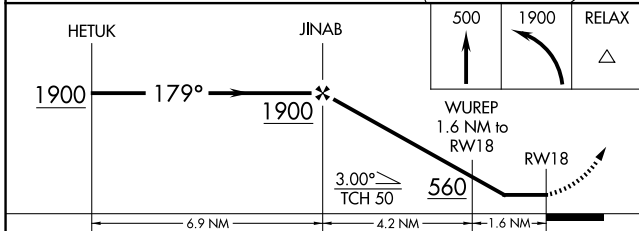
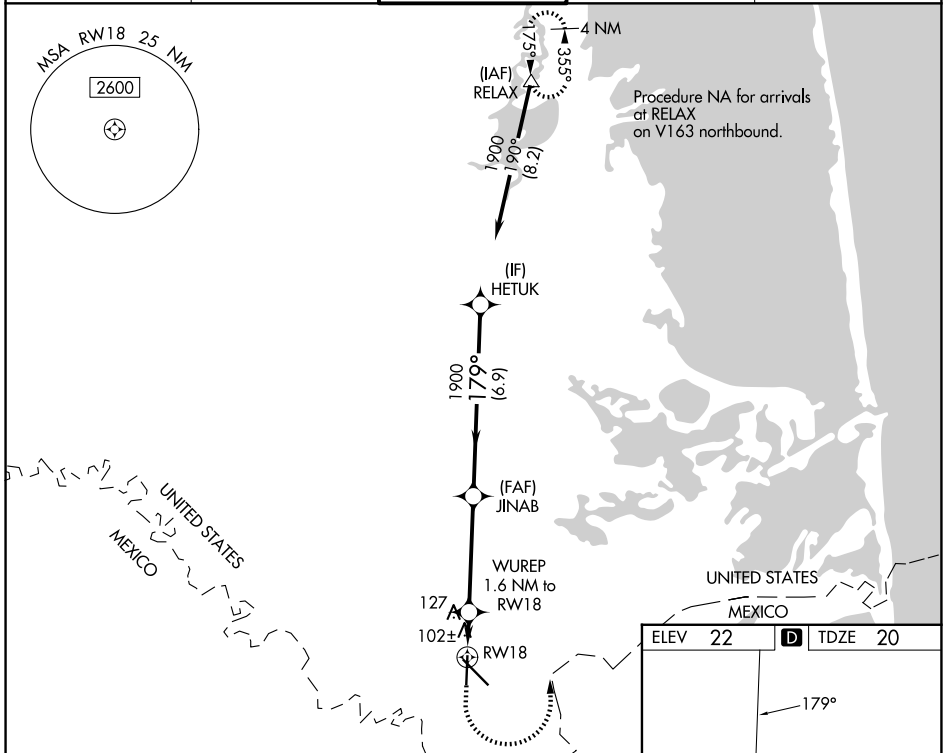
BROWNSVILLE/SOUTH PADRE ISLAND INTL (BRO)

RNP APCH.  
RADAR required.

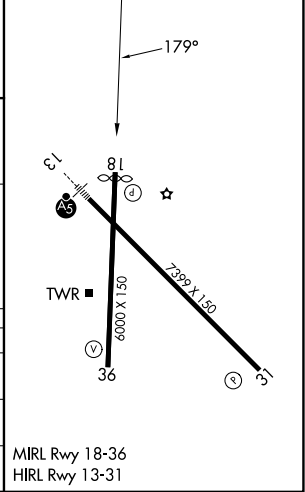
⚠ Rwy 18 helicopter visibility reduction below  $\frac{3}{4}$  SM NA. When local altimeter not received, use Port Isabel altimeter setting and increase all MDA 40 feet; increase LNAV Cats C and D visibility  $\frac{1}{8}$  mile and Circling Cat D  $\frac{1}{4}$  mile.

MISSED APPROACH: Climb to 500 then climbing left turn to 1900 direct RELAX and hold.

ATIS <b>128.55</b>	VALLEY APP CON <b>119.5 257.6</b>	BROWNSVILLE TOWER ★ <b>118.9 (CTAF) 239.3</b>	GND CON <b>121.9</b>	UNICOM <b>122.95</b>
-----------------------	--------------------------------------	--	-------------------------	-------------------------



ELEV 22	<b>D</b>	TDZE 20
---------	----------	---------



CATEGORY	A	B	C	D
LP MDA		360-1	340 (400-1)	
LNAV MDA		380-1	360 (400-1)	
CIRCLING	440-1 418 (500-1)	540-1 518 (600-1)	540-1½ 518 (600-1½)	680-2 658 (700-2)

MIRL Rwy 18-36  
HIRL Rwy 13-31

SC-3, 16 APR 2026 to 14 MAY 2026

SC-3, 16 APR 2026 to 14 MAY 2026