

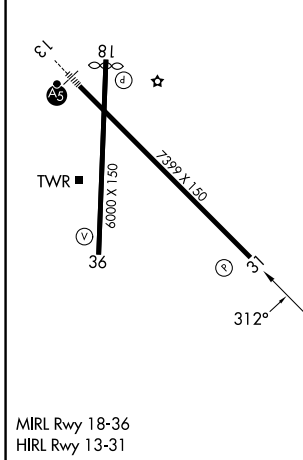
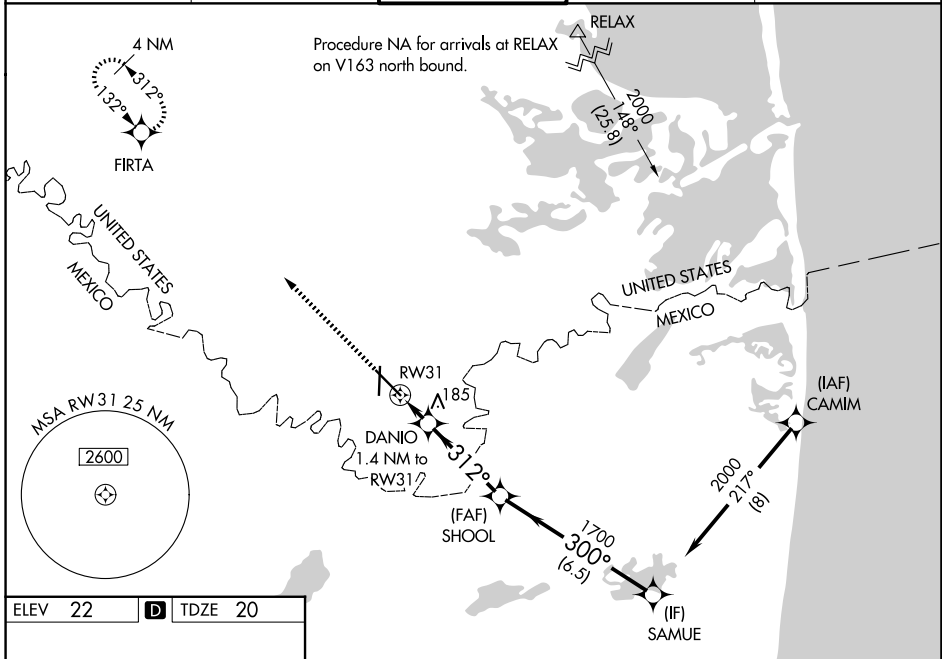
WAAS CH 65843 W31A	APP CRS 312°	Rwy Ldg TDZE Apt Elev	7399 20 22
--	------------------------	-----------------------------	---------------------------------------

RNAV (GPS) RWY 31

BROWNSVILLE/SOUTH PADRE ISLAND INTL (B.R.O)

RNP APCH - GPS.		MISSED APPROACH: Climb to 2000 direct FIRTA and hold.	
Rwy 31 helicopter visibility reduction below 3/4 SM NA. Circling Rwy 18 NA at night. For uncompensated Baro-VNAV systems, LNAV/VNAV NA below 1° C or above 54° C.			

ATIS 128.55	VALLEY APP CON 119.5 257.6	BROWNSVILLE TOWER* 118.9(CTAF) 239.3	GND CON 121.9	UNICOM 122.95
-----------------------	--------------------------------------	---	-------------------------	-------------------------



2000	FIRTA	VGSI and RNAV glidepath not coincident (VGSI Angle 3.00/TCH 68).			
		DANIO 1.4 NM to RW31	SHOOL 1700	SAMUE 2000	
		0.9 NM to RW31		300°	GP 3.00° TCH 60
		0.9	0.5	3.7 NM	6.5 NM
CATEGORY	A	B	C	D	
LPV DA		270-3/4	250 (300-3/4)		
LNAV/VNAV DA		270-3/4	250 (300-3/4)		
LNAV MDA		380-1		360 (400-1)	
CIRCLING	440-1 418 (500-1)	500-1 478 (500-1)	540-1 1/2 518 (600-1 1/2)	680-2 658 (700-2)	

SC-3, 16 APR 2026 to 14 MAY 2026

SC-3, 16 APR 2026 to 14 MAY 2026