

(BUF8.BUF) 23334

# BUFFALO EIGHT DEPARTURE

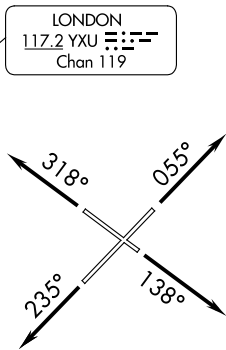
AL-65 (FAA)

BUFFALO NIAGARA INTL (BUF)  
BUFFALO, NEW YORK

D-ATIS 135.35  
CLNC DEL  
124.7 257.8  
CPDLC  
GND CON  
133.2 257.8  
BUFFALO TOWER  
120.5 257.8  
BUFFALO DEP CON  
126.15 263.125

TAKEOFF MINIMUMS:  
Rwys 5, 14, 23, 32: Standard.

**TOP ALTITUDE:  
10000**



LONDON  
117.2 YXU :---  
Chan 119

ROCHESTER  
110.0 ROC :---  
Chan 37

SYRACUSE  
117.0 SYR :---  
Chan 117

GENESEEO  
108.2 GEE :---  
Chan 19

JAMESTOWN  
114.7 JHW :---  
Chan 94

STONYFORK  
108.6 SFK :---  
Chan 23

DRYER  
113.6 DJB :---  
Chan 83

SLATE RUN  
113.9 SLT :---  
Chan 86

NOTE: RADAR required.

NOTE: Chart not to scale.

## DEPARTURE ROUTE DESCRIPTION

- TAKEOFF RUNWAY 5: Climb heading 055° until leaving 3000. Thence. . .
- TAKEOFF RUNWAY 14: Climb heading 138° until leaving 3000. Thence. . .
- TAKEOFF RUNWAY 23: Climb heading 235° until leaving 3000. Thence. . .
- TAKEOFF RUNWAY 32: Climb heading 318° until leaving 3000. Thence. . .

NON-TURBOJET AIRCRAFT ONLY: Climb on assigned heading, thence. . .  
. . . vectors to assigned route/fix. Maintain 10000 or assigned lower altitude.  
Expect clearance to filed altitude/flight level ten (10) minutes after departure.

NE-2, 16 APR 2026 to 14 MAY 2026

NE-2, 16 APR 2026 to 14 MAY 2026

**BUFFALO EIGHT DEPARTURE**  
(BUF8.BUF) 02DEC21

BUFFALO, NEW YORK  
BUFFALO NIAGARA INTL (BUF)