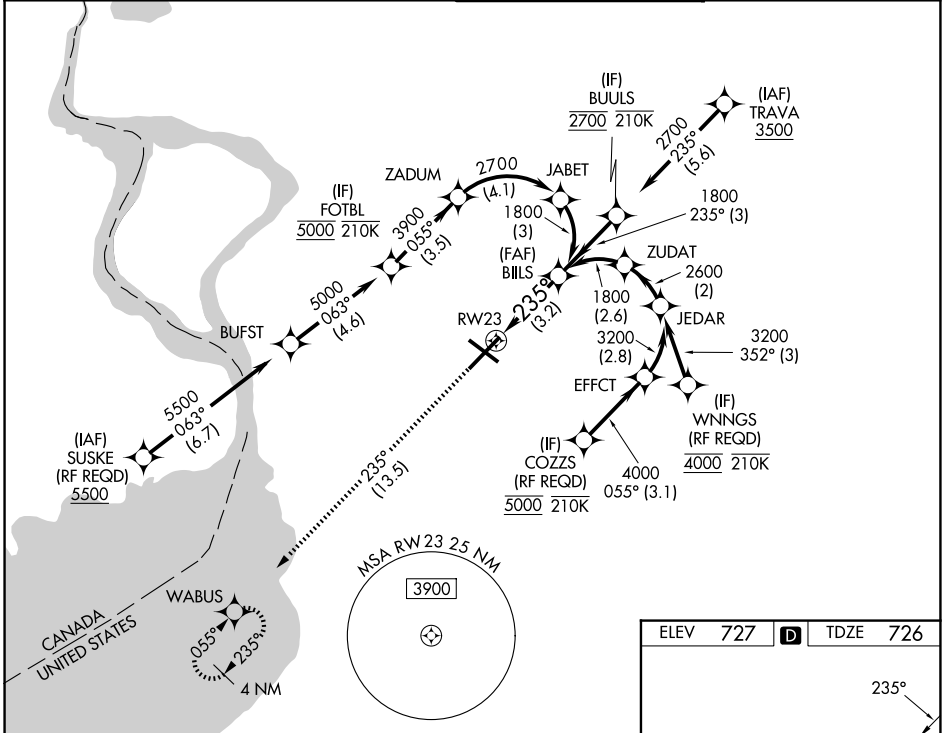


|             |          |             |
|-------------|----------|-------------|
| APP CRS     | Rwy Ldg  | <b>7569</b> |
| <b>235°</b> | TDZE     | <b>726</b>  |
|             | Apt Elev | <b>727</b>  |

# RNAV (RNP) Z RWY 23

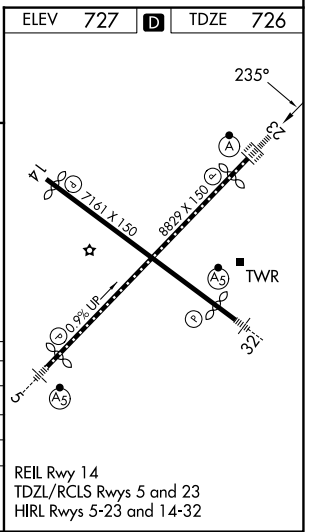
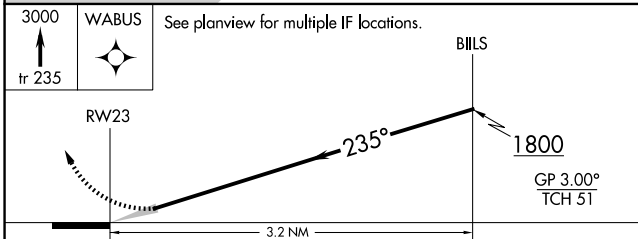
BUFFALO NIAGARA INTL (BUF)

|  |                       |                    |   |
|--|-----------------------|--------------------|---|
| RNP AR APCH.   |                       | ALSIF-2            | MISSED APPROACH: Climb to 3000 on the RNAV missed approach route to WABUS and hold. |
| <p>▼ For uncompensated Baro-VNAV systems, procedure NA below -18°C or above 54°C. For inop ALSIF, increase RNP 0.10 all Cats visibility to 1½. For inop ALSF, increase RNP 0.20 all Cats visibility to 1½. For inop ALSF, increase RNP 0.30 all Cats visibility to 1½.</p> |                       |                    |   |
| D-ATIS   | BUFFALO APP CON       | BUFFALO TOWER      | GND CON   |
| <b>135.35</b>  | <b>126.15 263.125</b> | <b>120.5 257.8</b> | <b>133.2 257.8</b>  |



NE-2, 16 APR 2026 to 14 MAY 2026

NE-2, 16 APR 2026 to 14 MAY 2026



| CATEGORY    | A | B       | C            | D |
|-------------|---|---------|--------------|---|
| RNP 0.10 DA |   | 1114/45 | 388 (400-7%) |   |
| RNP 0.20 DA |   | 1170/55 | 444 (500-1)  |   |
| RNP 0.30 DA |   | 1228-1½ | 502 (600-1½) |   |

**AUTHORIZATION REQUIRED**