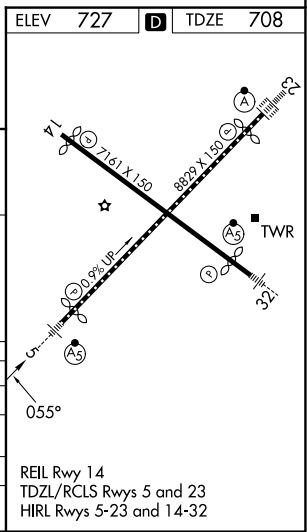
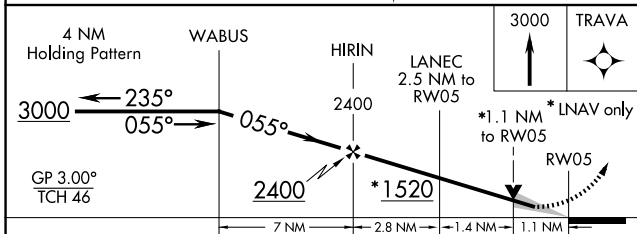
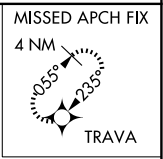
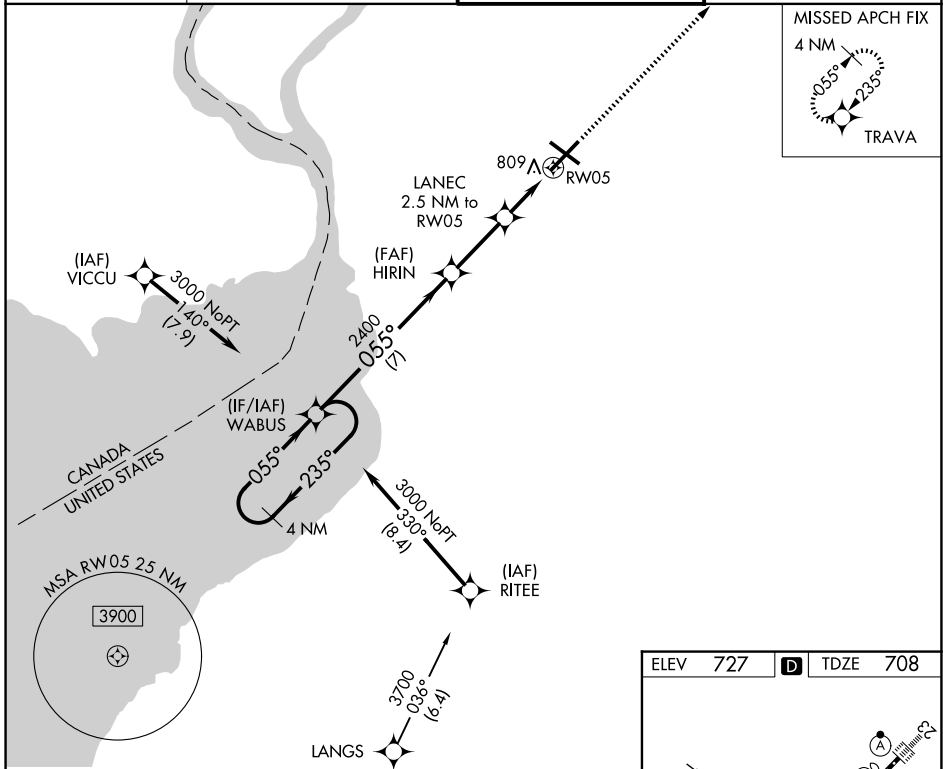


| | | |
|--|------------------------|--|
| WAAS CH 70311 W05A | APP CRS 055° | Rwy Ldg 7569 TDZE 708 Apt Elev 727 |
|--|------------------------|--|

RNAV (GPS) Y RWY 5

BUFFALO NIAGARA INTL (BUF)

| | | | |
|--|--|-------------------------------------|---|
| RNP APCH - GPS | | MALSRL | MISSED APPROACH: Climb to 3000 direct TRAVA and hold. |
| For uncompensated Baro-VNAV systems, LNAV/VNAV NA below -17°C or above 54°C. | | | |
| D-ATIS 135.35 | BUFFALO APP CON 126.15 263.125 | BUFFALO TOWER 120.5 257.8 | GND CON 133.2 257.8 |



| CATEGORY | A | B | C | D |
|--------------|---------|-------------|-------------------------|-----------------------|
| LPV DA | | 908/18 | 200 (200-½) | |
| LNAV/VNAV DA | | 997/24 | 289 (300-½) | |
| LNAV MDA | 1060/24 | 352 (400-½) | 1060/35 | 352 (400-¾) |
| CIRCLING | 1200-1 | 473 (500-1) | 1220-1½ 493 (500-1½) | 1340-2 613 (700-2) |

NE-2, 16 APR 2026 to 14 MAY 2026

NE-2, 16 APR 2026 to 14 MAY 2026