

LOC I-BUR 109.5	APP CRS 079°	Rwy Ldg TDZE 5801 727 Apt Elev 778
---------------------------	------------------------	---

ILS Y or LOC Y RWY 8

BOB HOPE (BUR)

From MIKEI: RNAV 1-GPS required.

Localizer unusable within 0.9 NM to thld. Straight-in Rwy 8 at night, Circling to Rwy 33 at night, operational VGSI required, remain on or above VGSI glidepath until threshold.

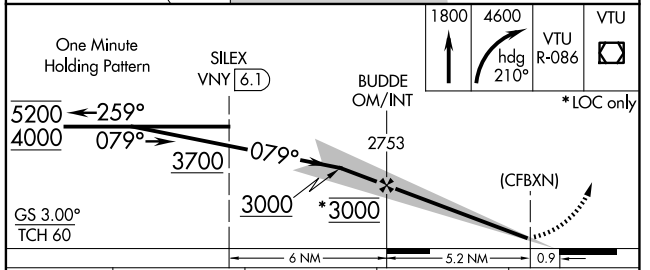
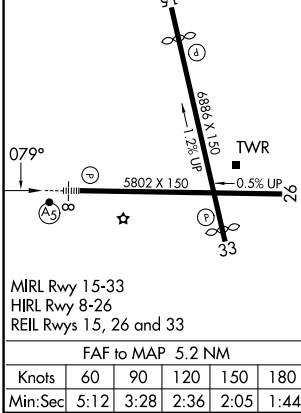
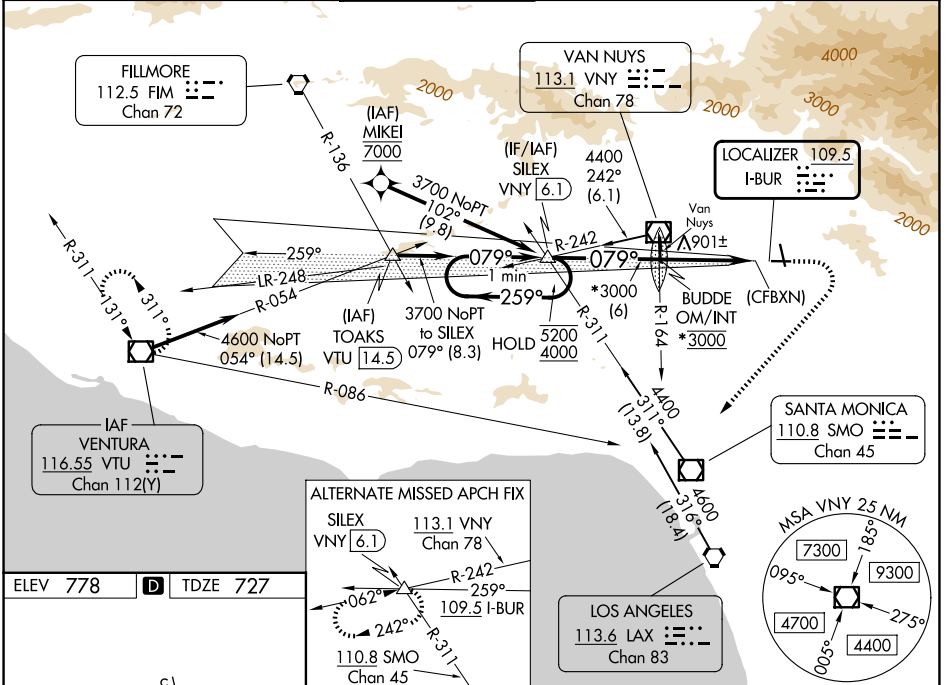
Localizer unusable within 0.9 NM to thld. Straight-in Rwy 8 at night, Circling to Rwy 33 at night, operational VGSI required, remain on or above VGSI glidepath until threshold.

⚠ Circling Rwy 26 NA at night and Circling Rwy 33 NA at night for Cat D. Circling NA for Cats A/B/C northeast of Rwy 15 and 26. Circling NA for Cat D east of Rwy 15-33. Inop table does not apply to S-ILS Rwy 8. For inop ALS, increase S-LOC 8 Cats A/B visibility to 1¼ SM. Rwy 8 helicopter visibility reduction below RVR 5000 NA.

MALSRL

MISSED APPROACH: Climb to 1800 then climbing right turn to 4600 on heading 210° and VTU VOR/DME R-086 to VTU VOR/DME and hold.

D-ATIS 134.5	SOCAL APP CON 120.4 360.6 (NORTH) 134.2 338.2 (WEST)	BURBANK TOWER 118.7 254.3	GND CON 123.9 348.6	CLNC DEL 118.0 348.6	CPDLC
------------------------	--	-------------------------------------	-------------------------------	--------------------------------	-------



CATEGORY	A	B	C	D
S-ILS 8		1555-2)½	828 (800-2)½	
S-LOC 8	1620/50	893 (900-1)	1620-2	893 (900-2)
CIRCLING	1620-1¼ 842 (900-1¼)	1640-1¼ 862 (900-1¼)	2240-3 1462 (1500-3)	2320-3 1542 (1600-3)

SW-3, 16 APR 2026 to 14 MAY 2026

SW-3, 16 APR 2026 to 14 MAY 2026