

LOC I-BUR 109.5	APP CRS 079°	Rwy Ldg TDZE 5801 727	Apt Elev 778
---------------------------	------------------------	---------------------------------	------------------------

ILS Z or LOC Z RWY 8

BOB HOPE (BUR)

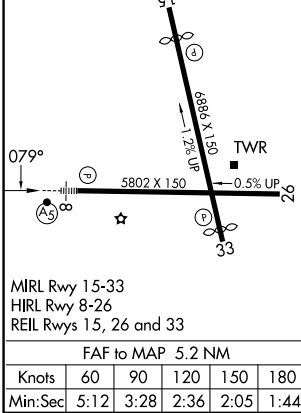
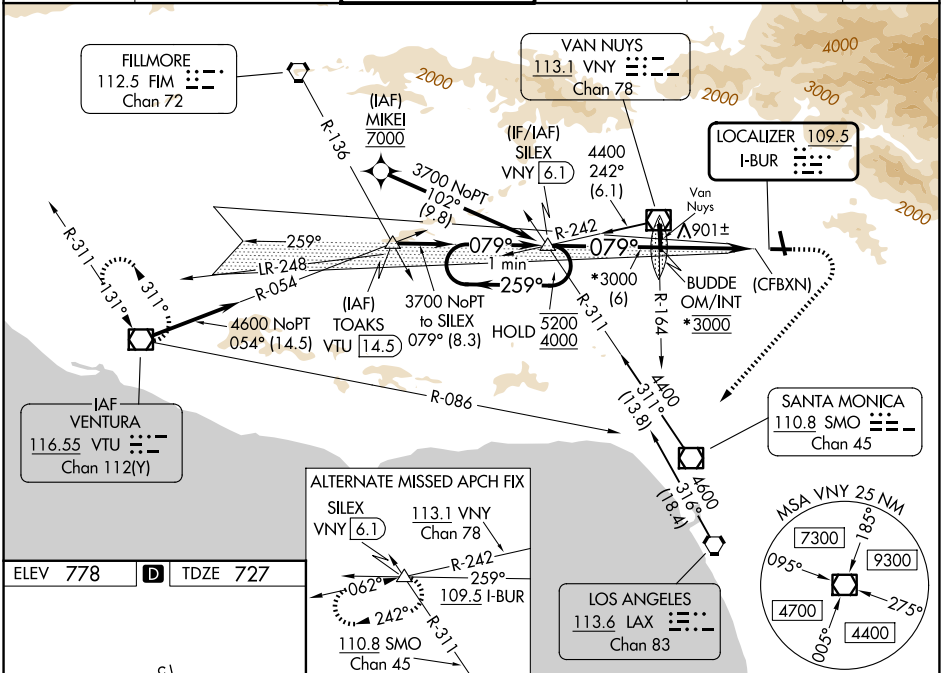
From MIKEI: RNAV 1-GPS required.

⚠ Localizer unusable within 0.9 NM to thld. Straight-in Rwy 8 at night, Circling to Rwy 33 at night, operational VGSJ required, remain on or above VGSJ glidepath until threshold. Circling Rwy 26 NA at night and Circling Rwy 33 NA at night for Cat D. Circling NA for Cats A/B/C northeast of Rwy 15 and 26. Circling NA for Cat D east of Rwy 15-33. Inop table does not apply to S-ILS 8. For inop ALS, increase S-LOC 8 Cats A/B visibility to RVR 6000 and S-LOC 8 Cats C/D visibility to 1/4 SM. Rwy 8 helicopter visibility reduction below RVR 5000 NA.

MALSR

MISSED APPROACH: Climb to 1300 then climbing right turn to 4600 on heading 210° and VTU VOR/DME R-086 to VTU VOR/DME and hold. #Messed approach requires a minimum climb of 340 feet per NM to 2520 (if unable to meet climb gradient, see ILS Y or LOC Y RWY 8).

D-ATIS 134.5	SOCAL APP CON 120.4 360.6 (NORTH) 134.2 338.2 (WEST)	BURBANK TOWER 118.7 254.3	GND CON 123.9 348.6	CLNC DEL 118.0 348.6	CPDLC
------------------------	--	-------------------------------------	-------------------------------	--------------------------------	-------



ELEV 778	D	TDZE 727
<p>One Minute Holding Pattern</p> <p>SILEX VNY 6.1</p> <p>BUDDEN OM/INT</p> <p>VTU R-086</p> <p>*LOC only</p>		
5200 ← 259°	4000 → 079°	3700 → 079°
GS 3.00°	TCH 60	3000 *3000
<p>6 NM 5.2 NM 0.9 NM</p>		

CATEGORY	A	B	C	D
S-ILS 8 #		1075/50	348 (300-1)	
S-LOC 8 #		1160/50	433 (400-1)	
CIRCLING	1280-1 1/8 502 (600-1 1/8)	1640-1 1/4 862 (900-1 1/4)	2240-3 1462 (1500-3)	2320-3 1542 (1600-3)

SW-3, 16 APR 2026 to 14 MAY 2026

SW-3, 16 APR 2026 to 14 MAY 2026