

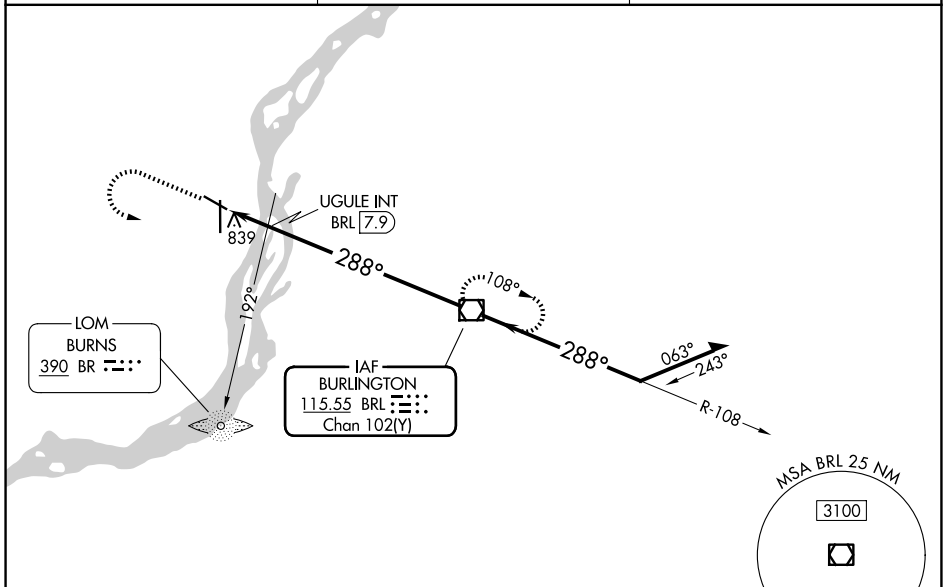
VOR/DME BRL 115.55 Chan 102(Y)	APP CRS 288°	Rwy Ldg TDZE 697 Apt Elev 698
--	------------------------	---

VOR RWY 30
SOUTHEAST IOWA RGNL (B.R.L.)

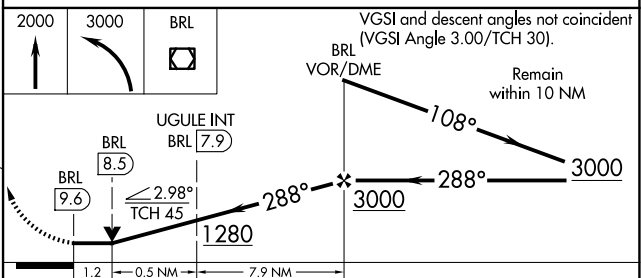
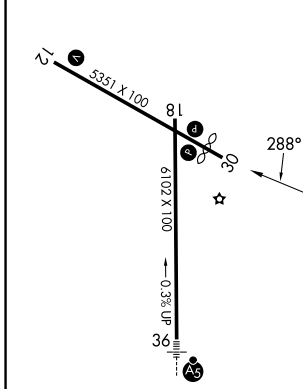
⚠ Rwy 30 helicopter visibility reduction below 3/4 SM NA.

MISSED APPROACH: Climb to 2000 then climbing left turn to 3000 direct BRL VOR/DME and hold.

ASOS 118.025	CHICAGO CENTER 135.6 370.95	UNICOM 123.0 (CTAF) 0
------------------------	---------------------------------------	---------------------------------



ELEV 698	D	TDZE 697
----------	----------	----------



CATEGORY	A		B		C		D	
	S-30	1280-1	583 (600-1)	1280-1 3/4	583 (600-1 3/4)	1380-2	682 (700-2)	NA
CIRCLING	1280-1	582 (600-1)	1380-2	682 (700-2)	1380-2	682 (700-2)	NA	NA
UGULE FIX MINIMUMS								
S-30	1100-1	403 (500-1)	1100-1 1/8	403 (500-1 1/8)	1380-2	682 (700-2)	NA	NA
CIRCLING	1180-1	482 (500-1)	1380-2	682 (700-2)	1380-2	682 (700-2)	NA	NA

MIRL Rwy 12-30 **0**
HIRL Rwy 18-36 **0**
REIL Rwys 12, 18 and 30 **0**

FAF to MAP 9.6 NM

Knots	60	90	120	150	180
Min:Sec	9:36	6:24	4:48	3:50	3:12

NC-3, 16 APR 2026 to 14 MAY 2026

NC-3, 16 APR 2026 to 14 MAY 2026