

WAAS CH 81835 W03A	APP CRS 034°	Rwy Ldg TDZE Apt Elev	7504 3295 3295
--	------------------------	-----------------------------	---

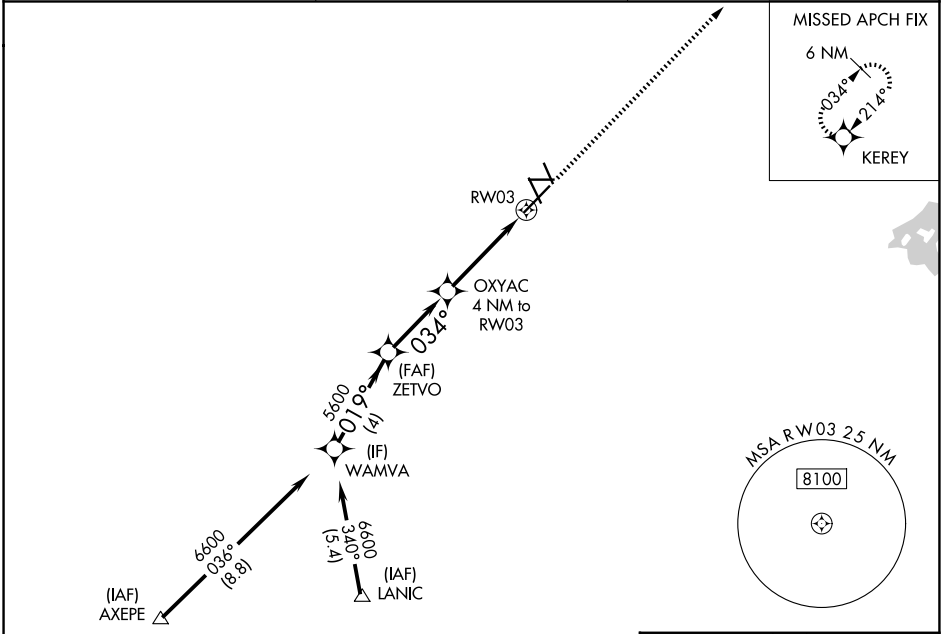
RNAV (GPS) RWY 3

CAVERN CITY AIR TRML (CNM)

⚠ For uncompensated Baro-VNAV systems, LNAV/VNAV NA below -10°C (14°F) or above 52°C (126°F). DME/DME RNP-0.3 NA. For inop MALS, increase LNAV Cat C/D visibility to 2½ miles, and increase LNAV/VNAV all Cats visibility to ¾ mile.

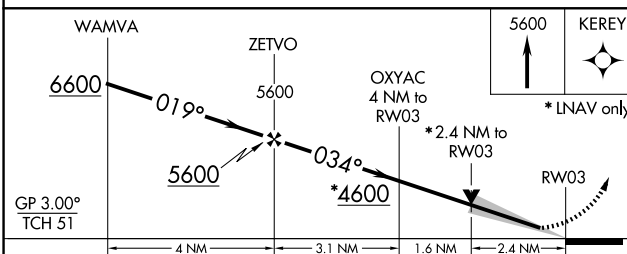
MALS
⚠ MISSED APPROACH: Climb to 5600 direct KEREY and hold.

ASOS 118.375	ALBUQUERQUE CENTER 135.875 292.15	UNICOM 123.0 (CTAF) 0
------------------------	---	---------------------------------

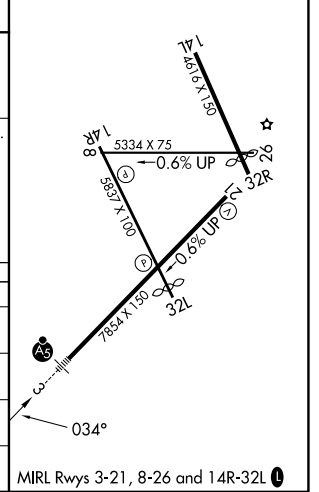


Procedure NA for arrivals at AXEPE on V102 southwest bound.

Procedure NA for arrivals at LANIC on V560 southwest bound.



ELEV 3295	D TDZE 3295
-----------	--------------------



CATEGORY	A	B	C	D
LPV DA		3495-½	200 (200-½)	
LNAV/VNAV DA		3545-½	250 (300-½)	
LNAV MDA	4100-½ 805 (900-½)	4100-¾ 805 (900-¾)	4100-1⅞	805 (900-1⅞)
CIRCLING	4100-1 805 (900-1)	4100-1¼ 805 (900-1¼)	4100-2½ 805 (900-2½)	4260-3 965 (1000-3)

SW-1, 16 APR 2026 to 14 MAY 2026

SW-1, 16 APR 2026 to 14 MAY 2026