

LOC I-SYD 111.3	APP CRS 032°	Rwy Ldg TDZE Apt Elev	10165 5328 5344
---------------------------	------------------------	-----------------------------	--

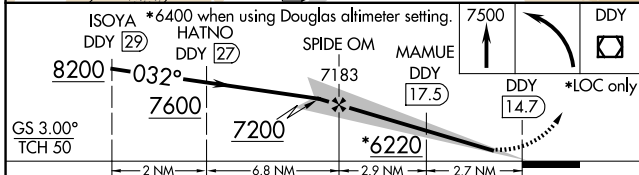
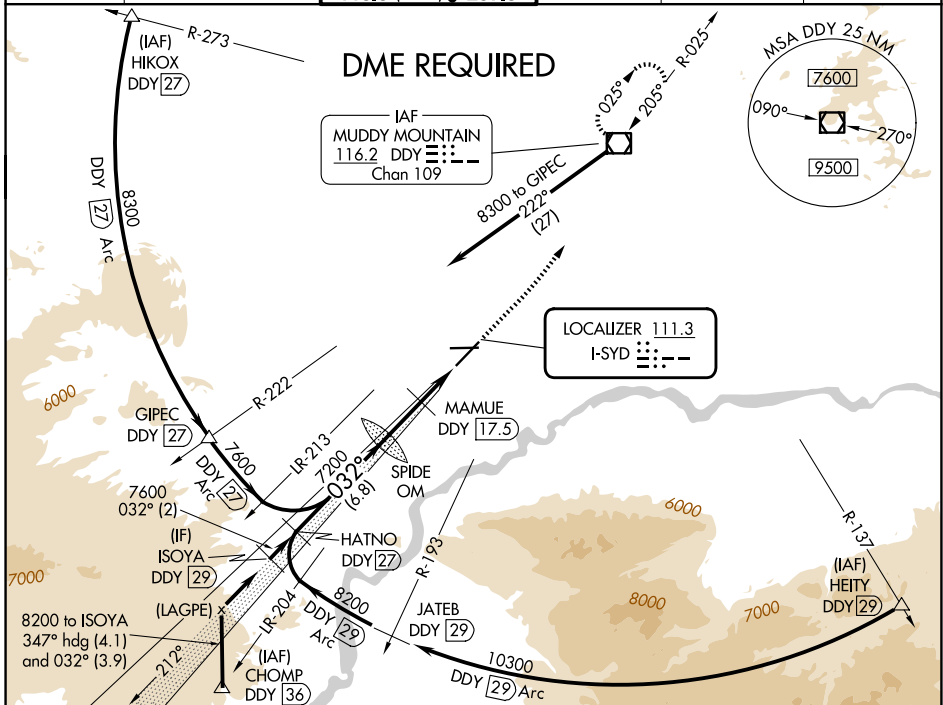
ILS or LOC RWY 3

CASPER/NATRONA COUNTY INTL (CPR)

▽ DME from DDY VOR/DME. Simultaneous reception of I-SYD and DDY DME required. When local altimeter setting not received, use Douglas altimeter setting and increase DA to 5697 feet and all MDAs 180 feet, increase S-ILS visibility all Cats ¼ SM and S-LOC visibility Cat B, C, D and Circling Cats B, C, D visibility ½ SM, increase MAMUE FIX MINIMUM Circling visibility Cat C ½ SM and Cat D ¼ SM. For inoperative MALSRS when using Douglas altimeter setting increase S-ILS visibility all Cats to 1 ½ mile. MAMUE FIX MINIMUMS: For inoperative MALSRS, increase S-LOC visibility Cats C, and D to 1 ½ mile. #RVR 1800 authorized with use of FD or AP or HUD to DA.

MALSRS
MISSED APPROACH:
Climb to 7500
then left turn direct
DDY VOR/DME
and hold.

ATIS 126.15	CASPER APP CON * 120.65 354.1	CASPER TOWER * 118.3 (CTAF) 257.8	GND CON 121.9	CLNC DEL 121.9 257.8	UNICOM 122.95
-----------------------	---	---	-------------------------	--------------------------------	-------------------------



ELEV 5344	D	TDZE 5328			
GS 3.00° TCH 50	DDY	*LOC only			
ISOYA DDY [29]	HATNO DDY [27]	SPIDE OM			
8200	7600	7200			
2 NM	6.8 NM	2.9 NM			
2.7 NM					
CATEGORY	A	B	C	D	
S-ILS 3	# 5528/24 200 (200-½)				
S-LOC 3	6220/40	892 (900-¾)	6220-2	892 (900-2)	
CIRCLING	6220-1¼	876 (900-1¼)	6220-2½	876 (900-2½)	
			6220-2¾	876 (900-2¾)	
MAMUE FIX MINIMUMS					
S-LOC 3	5740/24	412 (400-½)	5740/40	412 (400-¾)	
CIRCLING	5740-1	5800-1	5860-1½	6200-2¾	
	396 (400-1)	456 (500-1)	516 (600-1½)	856 (900-2¾)	
FAF to MAP 5.6 NM					
Knots	60	90	120	150	180
Min:Sec	5:36	3:44	2:48	2:14	1:52

NW-1, 16 APR 2026 to 14 MAY 2026

NW-1, 16 APR 2026 to 14 MAY 2026