

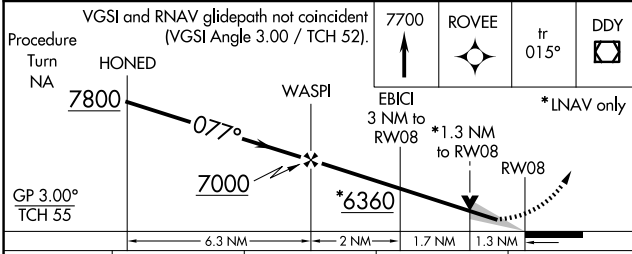
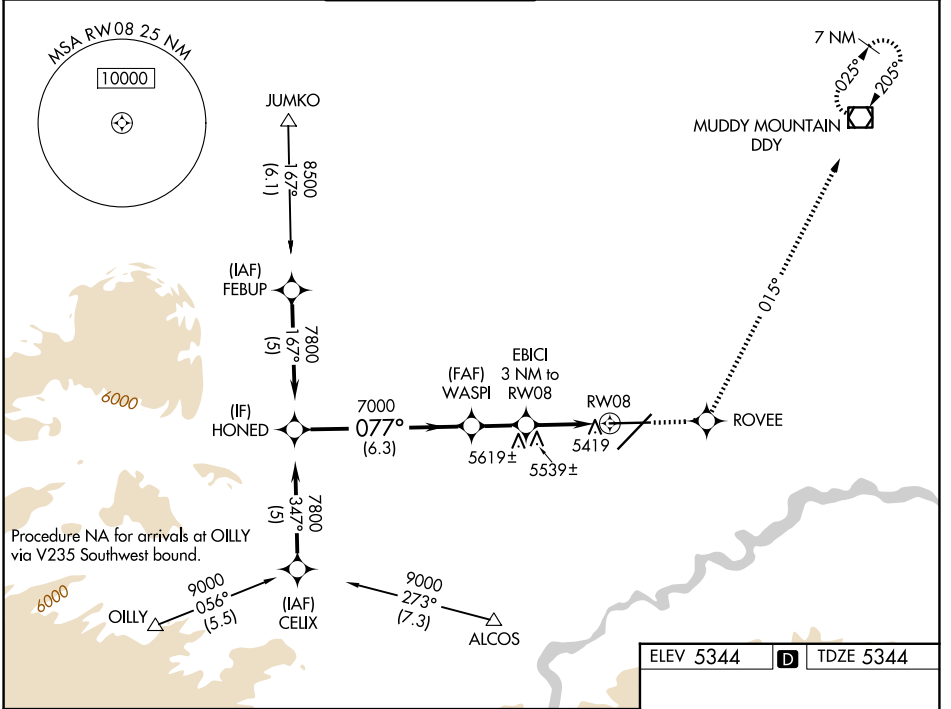
WAAS CH <b>86306</b> <b>W08A</b>	APP CRS <b>077°</b>	Rwy Ldg TDZE Apt Elev	<b>8679</b> <b>5344</b> <b>5344</b>
--	------------------------	-----------------------------	---

# RNAV (GPS) RWY 8

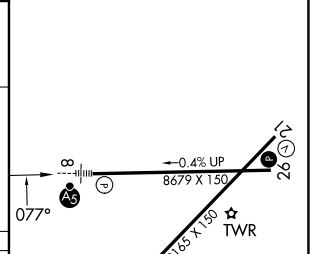
CASPER/NATRONA COUNTY INTL (CPR)

<p>▼ For uncompensated Baro-VNAV systems, LNAV/VNAV NA below -25°C (-13°F) or above 38°C (100°F). ▲ DME/DME RNP-0.3 NA.</p>	<p>MALSR</p>	<p>MISSED APPROACH: Climb to 7700 direct ROVEE and via track 015° to DDY VOR/DME and hold.</p>
---	--------------	--

ATIS <b>126.15</b>	CASPER APP CON * <b>120.65 354.1</b>	CASPER TOWER * <b>118.3 (CTAF) 0 257.8</b>	GND CON <b>121.9</b>	CLNC DEL <b>121.9 257.8</b>	UNICOM <b>122.95</b>
-----------------------	---	---	-------------------------	--------------------------------	-------------------------



ELEV 5344	D	TDZE 5344
-----------	---	-----------



CATEGORY	A	B	C	D
LPV DA		5594/24	250 (300-½)	
LNAV/VNAV DA		5689/40	345 (400-¾)	
LNAV MDA	5800/24	456 (500-½)	5800/40 456 (500-¾)	5800/50 456 (500-1)
CIRCLING	5800-1	456 (500-1)	5860-1½ 516 (600-1½)	6200-2¾ 856 (900-2¾)

REIL Rwy 21	1
HIRL Rws 3-21 and 8-26	1

NW-1, 16 APR 2026 to 14 MAY 2026

NW-1, 16 APR 2026 to 14 MAY 2026