

(BNYRD6.BNYRD) 25051

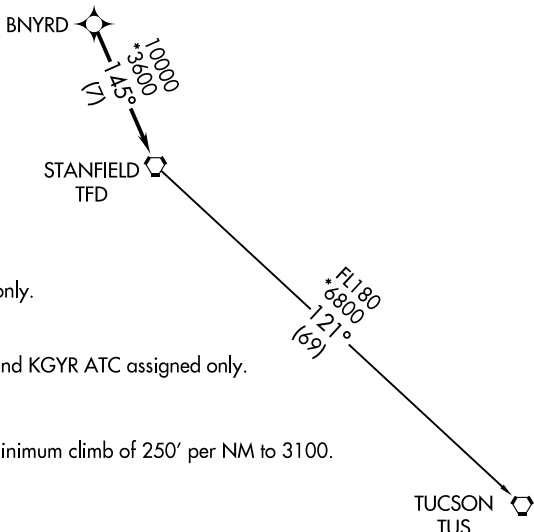
BNYRD SIX DEPARTURE (RNAV)

AL-74 (FAA)

MESA GATEWAY (IWA)
PHOENIX, ARIZONA

PHOENIX DEP CON
124.9 353.8
ATIS
133.5 270.275
CLNC DEL
135.05
GND CON
128.25 275.8
GATEWAY TOWER*
120.6 289.4

**TOP ALTITUDE:
ASSIGNED BY ATC**



- NOTE: RNAV 1.
- NOTE: Turbojets and turboprops only.
- NOTE: RADAR required.
- NOTE: GPS required.
- NOTE: Aircraft departing KGEU and KGYR ATC assigned only.

TAKEOFF MINIMUMS

Rwys 12L/C/R: Standard with a minimum climb of 250' per NM to 3100.
Rwys 30L/C/R: Standard.

NOTE: Chart not to scale.



DEPARTURE ROUTE DESCRIPTION

TAKEOFF RUNWAYS 12L/C/R: Climb heading 124° or as assigned by ATC, thence. . . .

TAKEOFF RUNWAYS 30L/C/R: Climb heading 304° or as assigned by ATC, thence. . . .

. . . .expect RADAR vectors to BNYRD, then on track 145° to TFD VORTAC, then on (transition), maintain ATC assigned altitude, expect filed altitude 3 minutes after departure.

TUCSON TRANSITION (BNYRD6.TUS)

BNYRD SIX DEPARTURE (RNAV)

(BNYRD6.BNYRD) 24MAY18

PHOENIX, ARIZONA
MESA GATEWAY (IWA)

SW-4, 16 APR 2026 to 14 MAY 2026

SW-4, 16 APR 2026 to 14 MAY 2026