

WAAS CH 58200 W12A	APP CRS 123°	Rwy Ldg 10201 TDZE 1359 Apt Elev 1384
--	------------------------	--

RNAV (GPS) RWY 12C

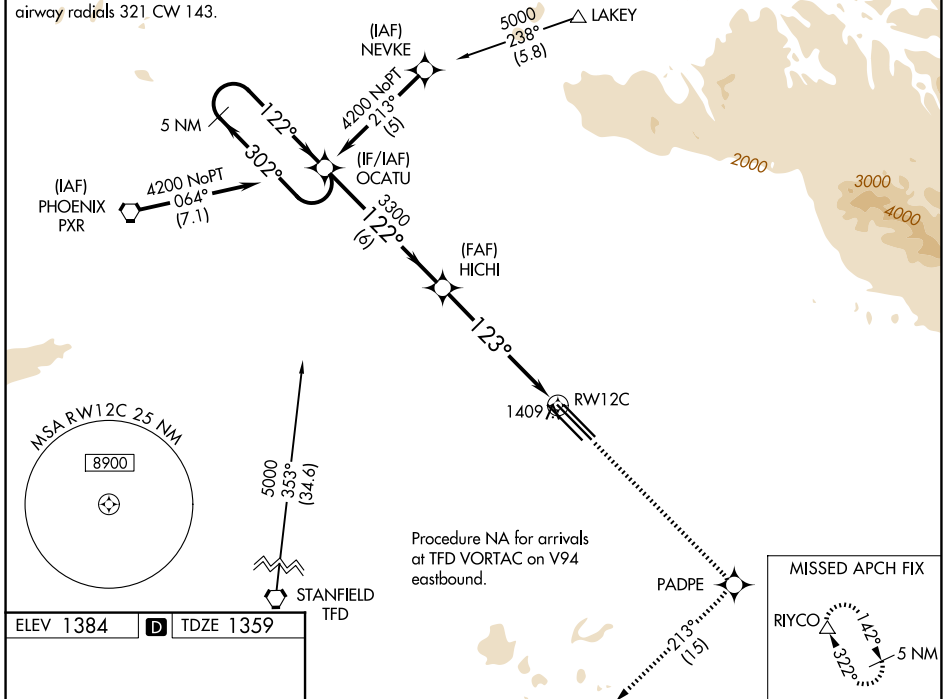
MESA GATEWAY (IWA)

⚠ DME/DME RNP-0.3 NA.
⚠ For uncompensated Baro-VNAV systems LNAV/VNAV NA below -17°C (2°F) or above 46°C (115°F).

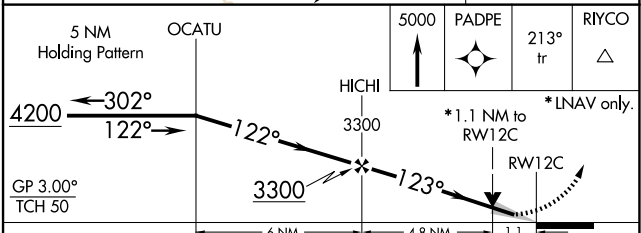
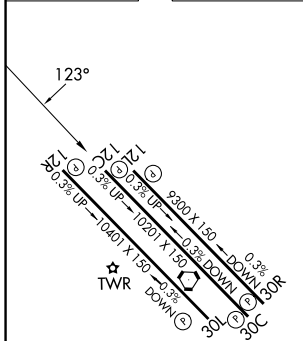
MISSED APPROACH: Climb to 5000 direct PADPE and on 213° track to RIYCO and hold.

ATIS 133.5 270.275	PHOENIX APP CON 124.9 353.8	GATEWAY TOWER* 120.6 (CTAF) 289.4	GND CON 128.25 275.8
------------------------------	---------------------------------------	---	--------------------------------

Procedure NA for arrivals on PXR VORTAC
 airway radials 321 CW 143.



ELEV 1384	D	TDZE 1359
-----------	----------	-----------



CATEGORY	A	B	C	D	E
LPV DA	1609-1 250 (300-1)				
LNAV/VNAV DA	1686-1¼ 327 (400-1¼)				
LNAV MDA	1740-1 381 (400-1)		1740-1¼ 381 (400-1¼)		
CIRCLING	1840-1¼	456 (500-1¼)	1880-1½ 496 (500-1½)	2000-2 616 (700-2)	2020-2¼ 636 (700-2¼)

MIRL Rwy 12R-30L
 HIRL Rwy 12L-30R and 12C-30C
 REIL Rwy 12L and 30R

SW-4, 16 APR 2026 to 14 MAY 2026

SW-4, 16 APR 2026 to 14 MAY 2026