

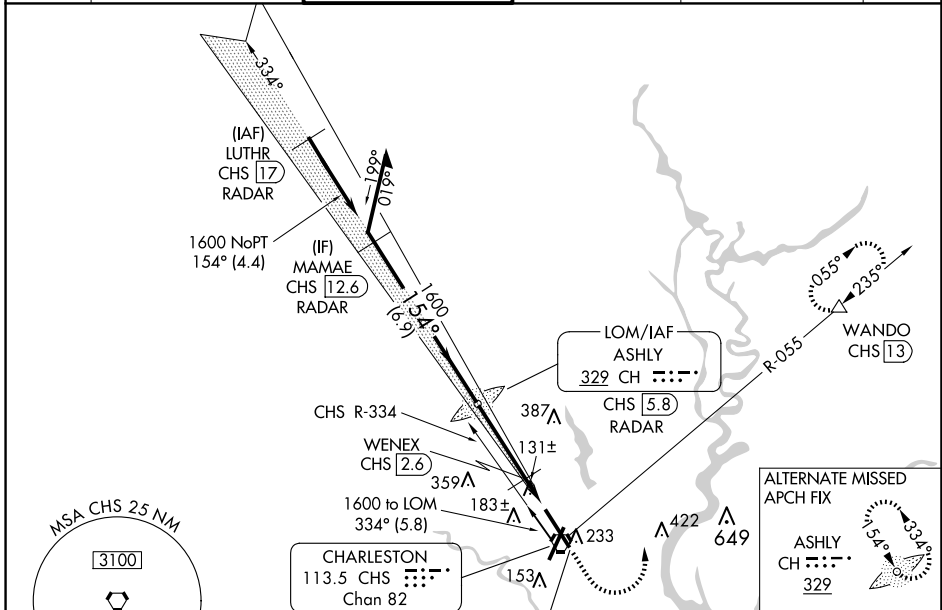
LOC I-CHS <b>109.7</b>	APP CRS <b>154°</b>	Rwy Ldg TDZE Apt Elev	<b>9001</b> <b>43</b> <b>46</b>
---------------------------	------------------------	-----------------------------	---------------------------------------

# ILS or LOC RWY 15

CHARLESTON AFB/INTL (CHS)

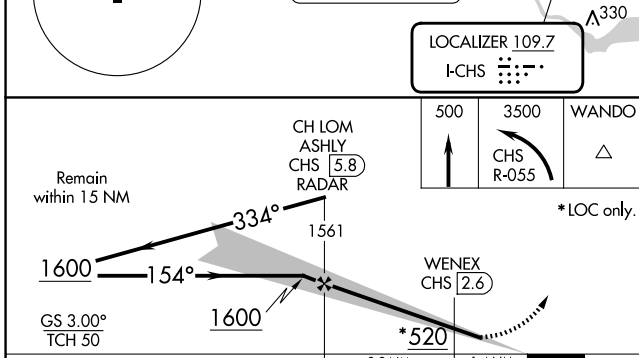
DME required.		ALSIF-2	MISSED APPROACH: Climb to 500 then climbing left turn to 3500 on CHS VORTAC R-055 to WANDO/CHS VORTAC 13 DME and hold, continue climb-in-hold to 3500.
For inop ALS, increase S-ILS 15 Cat E visibility to RVR 4000 and S-LOC 15 Cats C/D/E visibility to RVR 5500. DME from CHS VORTAC. Simultaneous reception of I-CHS and CHS DME required.			

D-ATIS <b>124.75</b>	CHARLESTON APP CON <b>120.7 306.925</b>	CHARLESTON TOWER <b>126.0 239.0</b>	GND CON <b>121.9 348.6</b>	CLNC DEL <b>127.325 291.65</b>	CPDLC
-------------------------	--	--	-------------------------------	-----------------------------------	-------



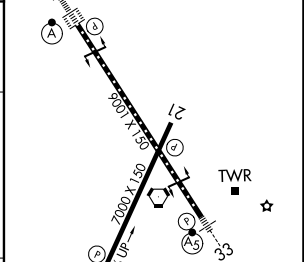
SE-2, 16 APR 2026 to 14 MAY 2026

SE-2, 16 APR 2026 to 14 MAY 2026



ELEV 46	TDZE 43
154°	TDZ/CL Rwy 15
	REIL Rwys 3 and 21
	HIRL Rwys 3-21 and 15-33

CATEGORY	A	B	C	D	E
S-ILS 15	243/18		200 (200-½)		
S-LOC 15	400/24	357 (400-½)	400/30	357 (400-¾)	
CIRCLING	540-1	494 (500-1)	540-1½ 494 (500-1½)	740-2¼ 694 (700-2¼)	740-2½ 694 (700-2½)



FAF to MAP 4.6 NM					
Knots	60	90	120	150	180
Min:Seq	4:36	3:04	2:18	1:50	1:32