

# PLMTO THREE DEPARTURE (RNAV)

**TOP ALTITUDE:**  
4000

NOTE: Chart not to scale.

## DEPARTURE ROUTE DESCRIPTION

**TAKEOFF RUNWAY 3:** Climb on heading 031° to 560, then right turn direct LOIRN, then on depicted route to PLMTO, thence. . . .

**TAKEOFF RUNWAY 15:** Climb on heading 154° to 560, then left turn direct JAYLN, then on depicted route to PLMTO, thence. . . .

**TAKEOFF RUNWAY 21:** Climb on heading 211° to 560, then left turn direct JAYLN, then on depicted route to PLMTO, thence. . . .

**TAKEOFF RUNWAY 33:** Climb on heading 334° to 560, then right turn direct LOIRN, then on depicted route to PLMTO, thence. . . .

. . . on assigned transition/route. Maintain 4000. Expect clearance to filed altitude within ten minutes after departure.

**GRAND STRAND TRANSITION (PLMTO3.CRE):**

SE-2, 16 APR 2026 to 14 MAY 2026

- D-ATIS 124.75
- CINC DEL 127.325 291.65
- CPDLC
- GND CON 121.9 348.6
- CHARLESTON TOWER 126.0 239.0
- CHARLESTON DEP CON 121.275 379.925

NOTE: If unable to accept climb rate, advise ATC on initial contact.

NOTE: RNAV 1.

NOTE: DME/DME/IRU or GPS required.

NOTE: RADAR required for non-GPS equipped aircraft.

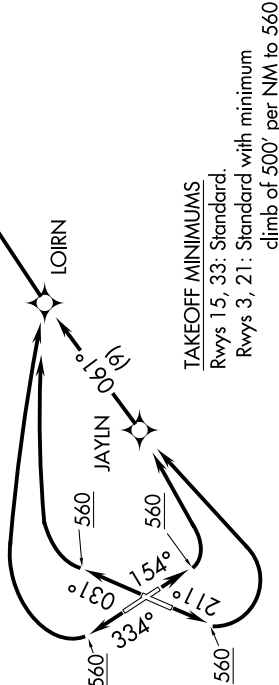
GRAND STRAND CRE

5000  
\*0.48  
121.00  
(49)

PLMTO

LOIRN

JAYLN



**TAKEOFF MINIMUMS**  
Rwys 15, 33: Standard.  
Rwys 3, 21: Standard with minimum climb of 500' per NM to 560.

# PLMTO THREE DEPARTURE (RNAV)

SE-2, 16 APR 2026 to 14 MAY 2026